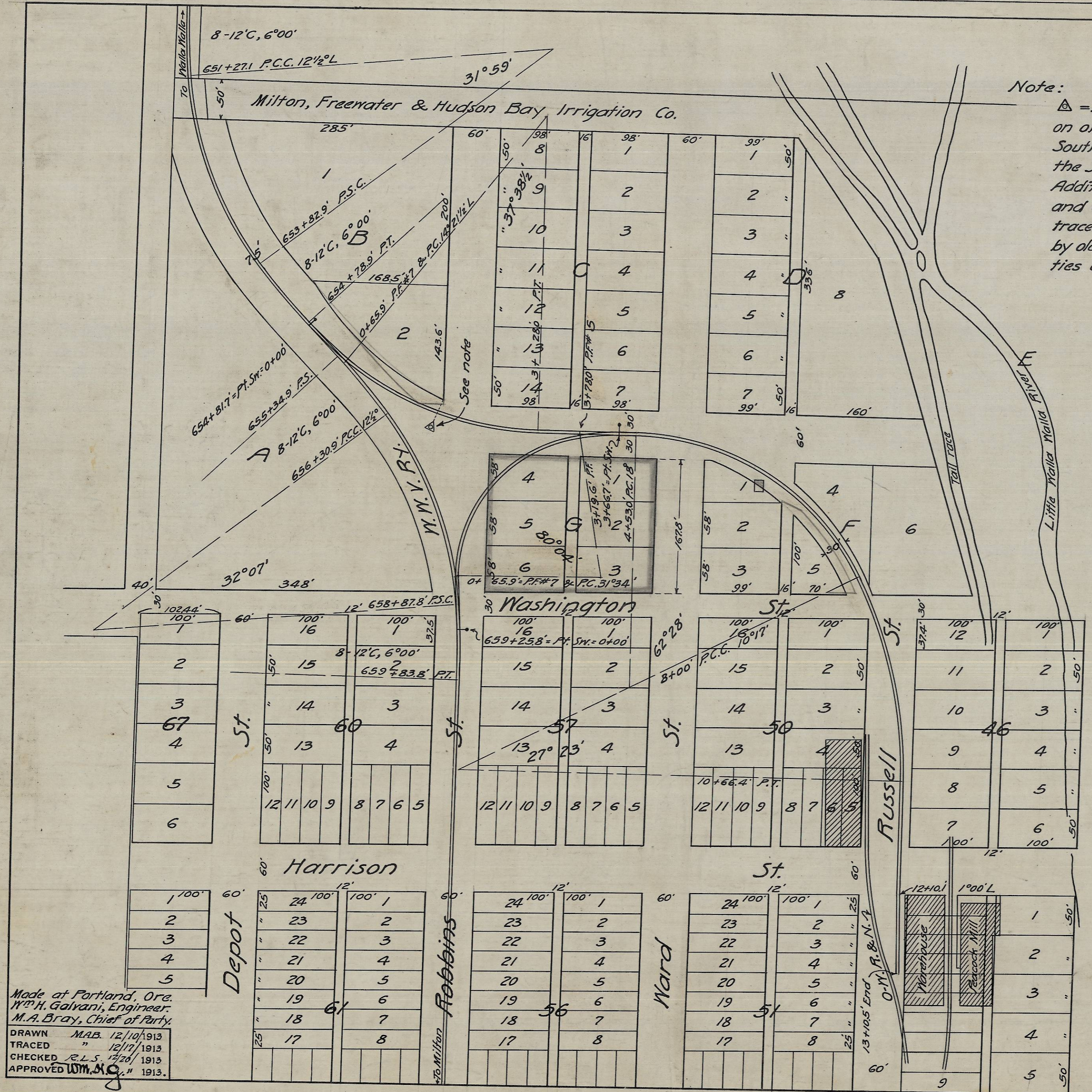
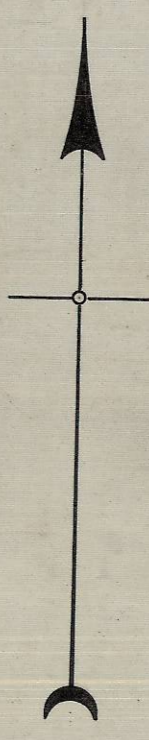


20012



Note:
 Δ = Point on center line of curve to the left, on original (abandoned) spur track, and 37.5 Southerly of and measured at right angles to the Southwesterly line of Lot 2, Block B, Railroad Addition to Freewater, as said curve was located and constructed and at present (Dec. 10, '13) still traceable on the ground and clearly shown by old embankment and spaces marking the ties originally laid thereon.



RECEIVED BY
 Umatilla County Surveyor
 Date 1-89
 Rec'd By KA
 No. 89-12-B

W. W. V. RY.
 Freewater Wye
 and Industrial Track to
 The Peacock Mill Co.
 Freewater, Umatilla County, Ore.
 Scale: 1"=100'

Made at Portland, Ore.
 W. H. Galvani, Engineer.
 M. A. Bray, Chief of Party.
 DRAWN M.A.B. 12/10/1913
 TRACED " 12/17/1913
 CHECKED R.L.S. 12/20/1913
 APPROVED W.M.C. 12/20/1913

PC-1122