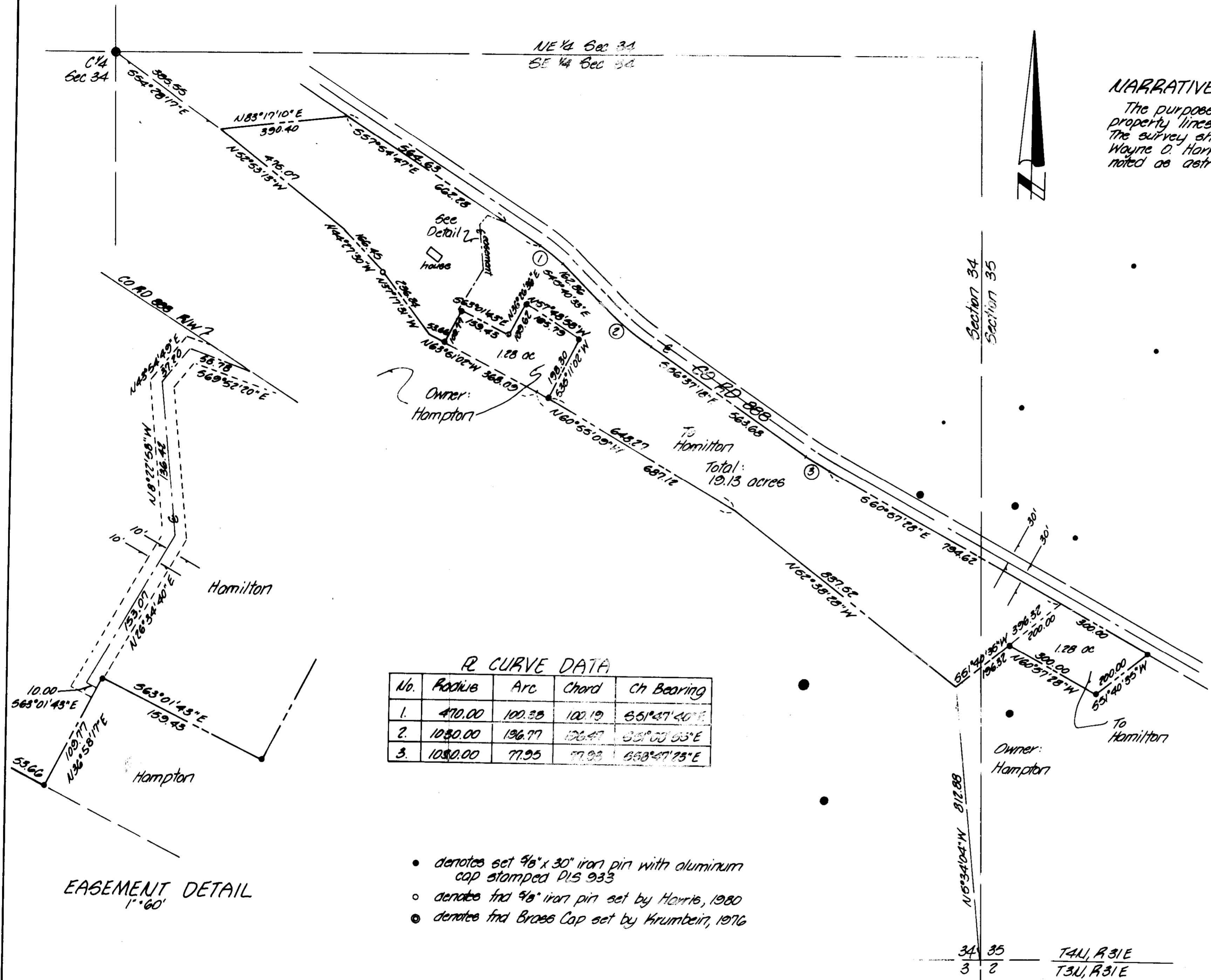
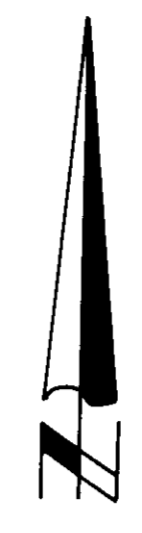


NE 1/4 Sec 34  
SE 1/4 Sec 34

**NARRATIVE:**

The purpose of this survey was to adjust the property lines to reflect a change in ownership. The survey shown is an unrecorded survey by Wayne D. Harris dated 8-26-80. Bearings are noted as astronomic.



**R CURVE DATA**

No.	Radius	Arc	Chord	Ch Bearing
1.	470.00	100.38	100.19	661°47'40"E
2.	1030.00	136.77	126.47	55°03'03"E
3.	1030.00	77.95	77.93	663°47'25"E

- denotes set 1/2" x 30" iron pin with aluminum cap stamped PLS 933
- denotes 1/2" iron pin set by Harris, 1980
- denotes 1/2" Brass Cap set by Krumbein, 1976

**EASEMENT DETAIL**  
1"=60'

34 35 T4U, R31E  
3 2 T3U, R31E

<b>KRUMBEIN ENGINEERING LTD.</b> ENGINEERS - SURVEYORS - PLANNERS 361 S.E. Second Pendleton, Oregon	Scale 1"=200'	Dwn. By MLD	Dwg. No. 88-02C	Revision 1
	Date 1-18-88	Ckd. By DNK	Job No.	Revision 2
Survey for  <b>HAMPTON</b>		RECEIVED BY Umshil... Date 12-88 Rec'd By KA No. 88-52-B		

SE 1/4, Sec 34 & SW 1/4, Sec 35, T4U, R31E, N.M.