

# OREGON STATE PARKS & RECREATION DIVISION SURVEY

BLUE MOUNTAIN FOREST WAYSIDE  
E. 1/2 SECTION 8, T. 1N., R. 35E., W.M.

UMATILLA COUNTY

SCALE: 1" = 400'

JUNE 22, 1988

## NARRATIVE

THE PURPOSE OF THIS SURVEY WAS TO ESTABLISH THE BOUNDARY OF BLUE MOUNTAIN FOREST WAYSIDE LOCATED IN THE EAST ONE HALF OF SECTION 8, T. 1N., R. 35E., W.M. OF UMATILLA COUNTY.

BEARINGS ARE FROM A SOLAR OBSERVATION, LOCAL HOUR ANGLE METHOD.

CONTROL WAS ESTABLISHED WITH A PENTAX, PX-10D, TOTAL STATION.

THE PARKS SURVEY CREW CONSISTED OF R. HILL, H. HANSON, L. BOGE, AND SOMETIMES A. SLACK.

THE EXISTING OLD OREGON TRAIL HIGHWAY WAS TIED TO THE CONTROL AND COMPARED TO DATA ON HIGHWAY DEPT. "IR" MAPS DATED 1928. PART OF THE OLD ALIGNMENT HAS OBVIOUSLY CHANGED DUE TO I-84 CONSTRUCTION. A BEST FIT LOCATION WAS OBTAINED, BY USE OF 1928 DATA AND EXISTING LOCATION, AND RELATED TO THE CONTROL.

## BOUNDARY RESOLUTION

**PARKS DEED P-64**— WEST BOUNDARY, STRAIGHT LINE BETWEEN SE COR. 8 AND S. 1/16, 8 | 9.

**P-88**— WEST BOUNDARY, OLD HIGHWAY RELOCATED IN THIS AREA, 1928 MAP DATA USED. THE S.E. 1/16 WAS NOT FOUND, RECORD DISTANCE AND BEARING USED FOR SOUTH END, DISTANCE ALONG 1/16 LINE AT NORTH END, GRANT BOUNDARY ADJUSTMENT USED FOR POINTS IN BETWEEN.

**P-103**— WEST BOUNDARY, (SEE P-88 FOR SOUTH END) THE N. 1/16, 8 | 9 WAS NOT IN, BUT A WITNESS CORNER 30 FT. E. WAS FOUND. THE EXISTING HIGHWAY ALIGNMENT BY THIS CORNER APPEARS TO BE CLOSE TO ORIGINAL. THE MEASURED DISTANCE FROM THE W.C. TO THE HIGHWAY CENTERLINE INDICATES THAT THE DEED AND MAP DISTANCES WERE MEASURED FROM THE W.C. WHICH WAS MISTAKEN FOR THE 1/16 CORNER. WE USED THE DEED

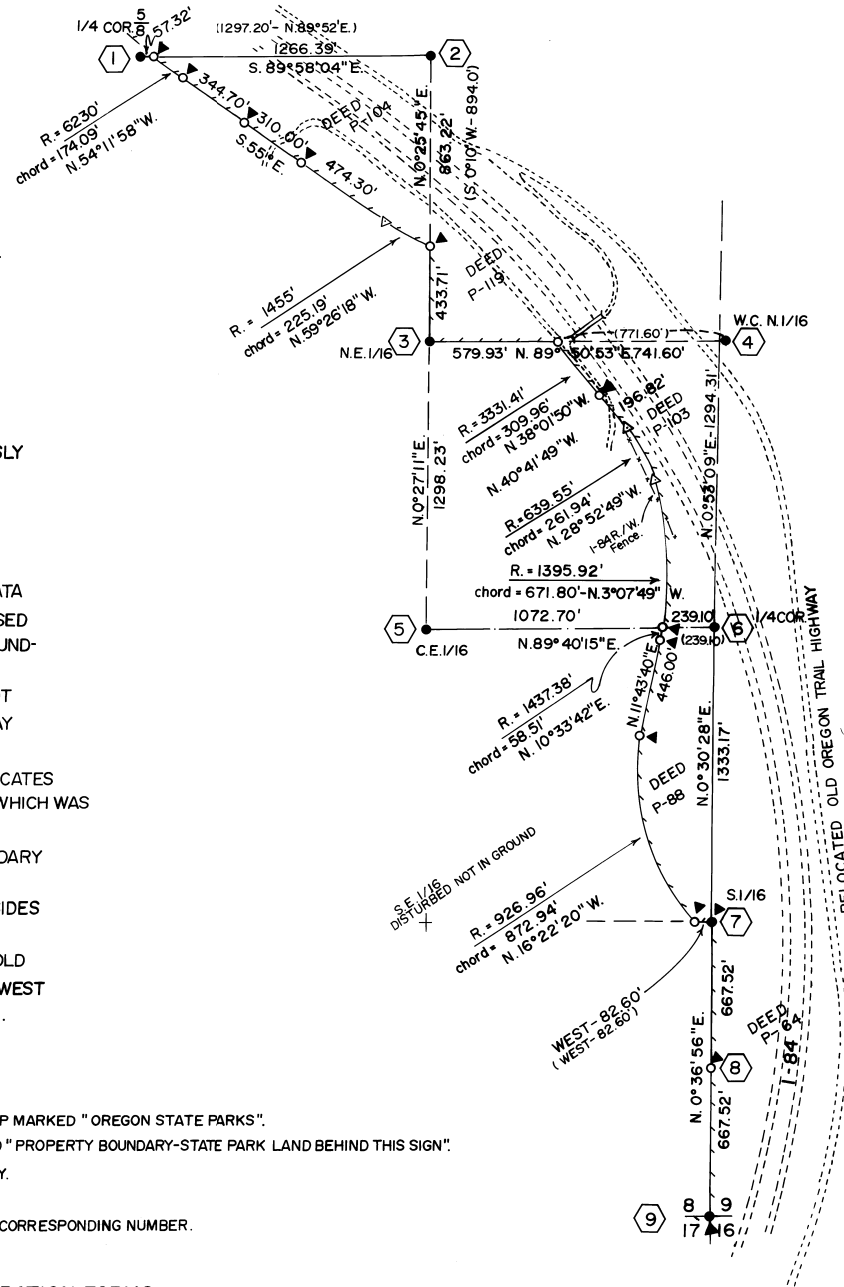
DISTANCE FROM FOUND W.C. TO DETERMINE NORTH END. GRANT BOUNDARY ADJUSTMENT USED FOR POINTS IN BETWEEN.

**P-119**— WEST & SOUTH BOUNDARY, STRAIGHT LINE ALONG SOUTH AND WEST SIDES OF THE N.E. QUARTER OF THE N.E. QUARTER OF SECTION 8.

**P-104**— **SOUTHWEST** BOUNDARY, OUR 500' R/W BEST FIT LOCATION OF THE OLD OREGON TRAIL HIGHWAY WAS USED TO DETERMINE THE SOUTH AND WEST ENDS. GRANT BOUNDARY ADJUSTMENT USED FOR POINTS IN BETWEEN.

- INDICATES FOUND MONUMENT.
- INDICATES SET 5/8"x30" IRON ROD WITH YELLOW PLASTIC CAP MARKED "OREGON STATE PARKS".
- ◄ INDICATES SET ORANGE CARSONITE POST WITH DECAL MARKED "PROPERTY BOUNDARY-STATE PARK LAND BEHIND THIS SIGN".
- ④ INDICATES PARK BOUNDARY POINTS NOT SET ON THIS SURVEY.
- INDICATES PARK BOUNDARY.
- ⑨ INDICATES SEE OREGON CORNER RESTORATION FORM WITH CORRESPONDING NUMBER.
- ( ) INDICATES RECORD INFORMATION.

NOTE: SEE ACCOMPANYING OREGON CORNER RESTORATION FORMS



REGISTERED  
PROFESSIONAL  
LAND SURVEYOR

*John E. Hollingsworth*  
OREGON  
JULY 9, 1988  
JOHN E. HOLLINGSWORTH  
691

OREGON STATE PARKS  
525 TRADE ST. S.E.  
SALEM, OR. 97310

RECEIVED BY

Umatilla County Surveyor  
Date 6-88  
Rec'd by K.A.  
No. 88-376