



SCALE: 1" = 100'

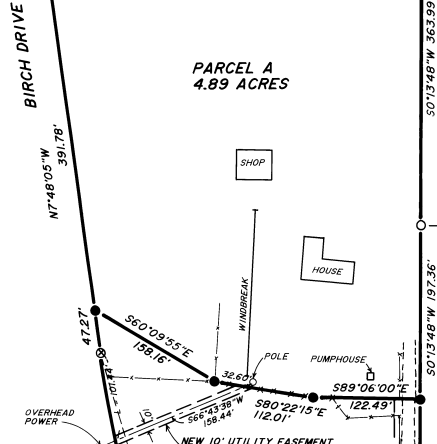
R/W CURVE DATA
 $\Delta = 2'52.03"$
 $R = 1450.00'$
 CHORD = $N6'22'04"W 72.56'$



LOT 3, BLOCK 1
 FIELDCREST

LEGEND

- SET 5/8" BY 30" I. PINS WITH 1/2" PLASTIC CAPS MARKED "W.R.WELLS PLS 1106".
- MONUMENTS FOUND FROM FIELDCREST SUBDIVISION, 5/8" I. PINS UNLESS OTHERWISE NOTED.
- ⊗ FOUND 5/8" I. PINS WITH 1/2" ALUM. CAPS MARKED "KRUMBEIN ENGR. PLS 333".
- (OXOX) RECORD FROM FIELDCREST SUBDIVISION PLAT.

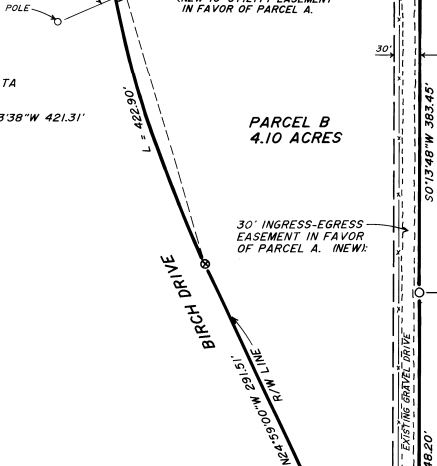


LOT 2, BLOCK 1
 FIELDCREST

NARRATIVE OF SURVEY

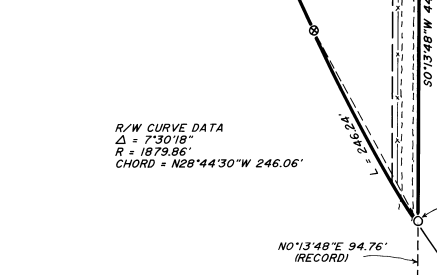
THE PURPOSE OF THIS SURVEY WAS TO DIVIDE THE TOTAL WEEKS PARCEL INTO PARCELS A AND B AS SHOWN. THE EXTERIOR MONUMENTS FOR THE TOTAL PARCEL HAD BEEN PLACED BY KRUMBEIN ENGINEERING IN JUNE, 1979, SEE MAP NO. Q-1212-B. THE MONUMENTS SET BY KRUMBEIN ENGINEERING ARE ACCEPTABLY LOCATED AND MATCH THE RECORD BEARINGS AND DISTANCES FOR THE TOTAL PARCEL. MEASUREMENTS ON THIS SURVEY WERE MADE WITH THEODOLITE, INFRA-RED DISTANCE MEASURING DEVICE, AND STEEL TAPE. BASIS OF BEARINGS FOR THIS SURVEY IS THE LINE BETWEEN THE INITIAL POINT MONUMENT FOR FIELDCREST SUBDIVISION AND THE IRON PIN MONUMENT FOR THE N.E. CORNER OF PARCEL A.

R/W CURVE DATA
 $\Delta = 17'11.04"$
 $R = 1410.00'$
 CHORD = $N16'23'38"W 421.31'$

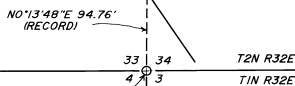


LOT 1, BLOCK 1
 FIELDCREST

R/W CURVE DATA
 $\Delta = 7'30.18"$
 $R = 1873.86'$
 CHORD = $N28'44'30"W 246.06'$



INITIAL POINT OF FIELDCREST
 3" BRASS CAP ON 2 1/2" I. PIPE



FOUND 2 1/2" IRON PIPE
 PROJECTING 2 1/2" FROM GROUND.

REGISTERED
 PROFESSIONAL
 LAND SURVEYOR
William R. Wells
 OREGON
 JULY 24, 1977
 WILLIAM R. WELLS
 1106

**PLAT OF SURVEY
 FOR
 ROBERT WEEKS**

LOCATED IN THE S.E. 1/4 OF SECTION 33
 T 1 N, R 32 E, W.M., UMATILLA COUNTY

SURVEYED BY WILLIAM R. WELLS
 P.O. BOX 1696, PENDLETON, OR
 PHONE 276-6362 AUGUST 5, 1987.

8-87
 87-33