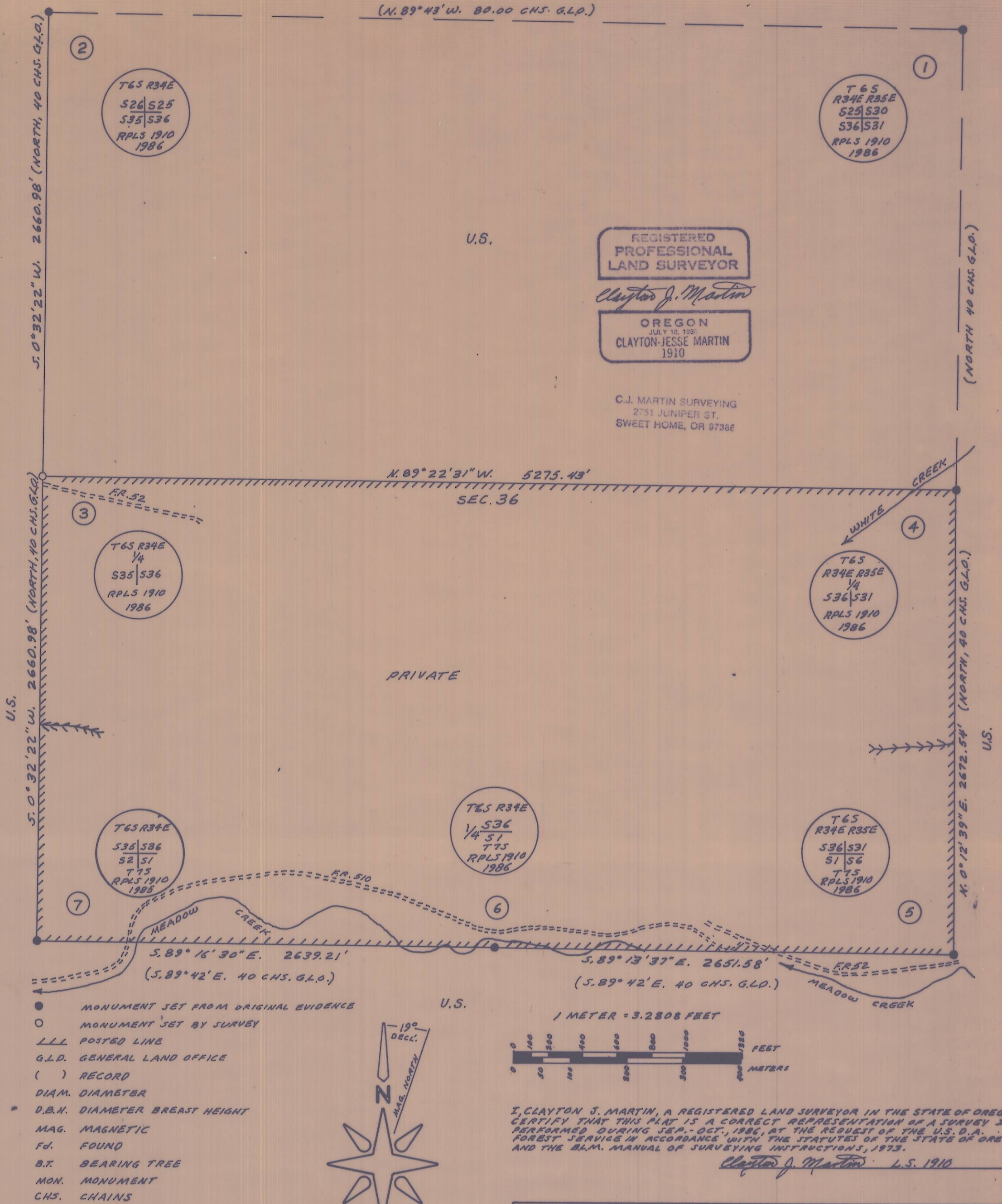


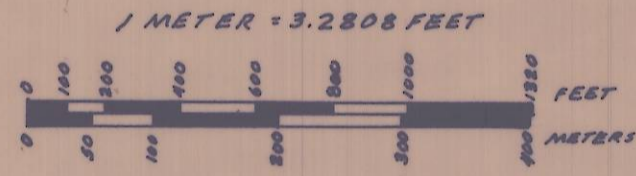
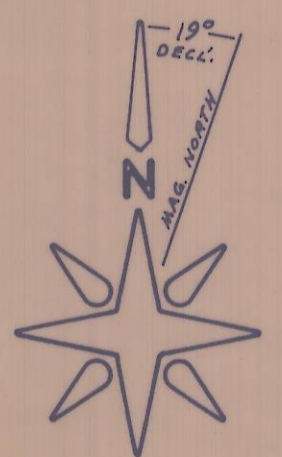
1. Cor. Sec's. 25,30,31,36. Fd. Stone, 18"x12"x3" (20"x13"x5") w/7 fragments. Pieced together I find 5 notches on No. face and 1 notch on So. face. No trace of NE BT. 16" D.B.H. (12") Tamarack S.52°E., 91.74' (S.52°E., 139 lks., 91.74') w/opened face no marks. Blaze below, grown shut. S.W. B.T., only charred wood remains. N.W. B.T., rotten remains of stump, N.70°W., 2.64' (N.70°W., 4lks., 2.64'). Set; a 2 1/2" diam. alum. cap on a 2 1/2"x30" alum. pipe w/flared bottom at corner and buried cornerstone and fragments alongside pipe. Cap marked per sketch. 5" D.B.H. White Fir, N.61°E., 21.3' scribed XBT. 15" D.B.H. Tamarack, N.81°W., 36.5' scribed T6SR34ES25BT. 20" D.B.H. Douglas Fir, S.14 1/2°W., 31.7', scribed T6SR34ES36BT 16" D.B.H. Douglas Fir, S.51 1/2°E., 76.6' scribed T6SR35ES31BT.
2. Cor. Sec's. 25,26,35,36. Fd. Post gone. 24" D.B.H. (20") Douglas Fir, S.60°E., 16.5', (S.60°E., 25 lks., 16.5') 8" D.B.H. (10"). Tamarack snag, S.42°W., 16.5' (S.42°W., 25 lks., 16.5') w/scribes visible on a nearly healed blaze. Pine, down and out of position, N.25°W., 1.98' (N.25°W., 3 lks., 1.98') w/scribes in upper blaze & BT in lower blaze. 12" Pine, N.54°E., 9.9' (N.54°E., 15 lks., 9.9') only a stump remains. Set; A 2 1/2" diam. alum. cap on a 2 1/2"x30" alum. pipe w/flare at bottom at record distances from standing B.T.'s. Cap mkd. per sketch. Set steel posts 42"± E. & W. w/mon. & attn. signs attached. 14" D.B.H. Spruce, N. 5 1/2°E., 6.1', scribed T6SR34ES25BT. 10" D.B.H. White Fir, S.44 1/2°W., 22.1', scribed T6SR34ES35BT. 11" D.B.H. Spruce, N. 51 1/2°W., 10.5', scribed T6SR34ES26BT.
3. 1/4 Cor. Sec's. 35,36. Fd. Nothing. probably destroyed by road construction. Set corner at proportional measure. Set; a 2 1/2" diam. alum. cap on a 2 1/2"x30" alum. pipe w/flare at bottom. cap mkd. per sketch. Raised stone mound. 16" D.B.H. Tamarack, N. 52 1/2°E., 25.5', scribed 1/4S36BT. 7" D.B.H. White Fir, N. 25 1/2°W., 92.5', scribed 1/4S35BT.
4. 1/4 Cor. Sec's. 36,31. Fd. stone, 4' high X 3' long. Only one available of correct height. Possible chisel mark. Stump hole S.81°W., 19.8' (S.81°W., 30 lks., 19.8') rotten wood. Stump hole, down tree, no marks, rotted, N. 8°E. 8.58' (N.28°E., 13 lks., 8.58'). Stone, 5' high X 7' long X 4 1/2" wide, S.56°W., 2.8'. Large stone, S.45°E., 10'± Set; At record distances from stump holes on stone; a 3" diam. brass cap in a drilled and grouted hole. Cap mkd. per sketch. 8" D.B.H. Douglas Fir, S.89 1/2°E., 25.4', scribed 1/4S31BT. 8" D.B.H. Subalpine Fir, N.36°W., 15.3', scribed 1/4S36BT.
5. Cor. Sec's. 1,6,31,36. Fd. Stone 18"x9"x7" w/6 notches on each edge (20"x20"x8"), set firmly in place. (10") Lodgepole Pine, N.36°E., 22.44' (N.36°E., 34 lks., 22.44') BT scribe & chaining notch. Dead and down. 13" D.B.H. (11") Lodgepole Pine, Dead and Down, S.38°E., 22.44' (S.38°E., 34 lks., 22.44') scribed T7SR35ES6BT. B.T. tags, attn., sign. Stump hole, S. 60°W., 15.18' (S.60°W., 23 lks., 15.18') Rotten wood in stump hole, N. 70°W., 19.44' (N.70°W., 29 lks., 19.44') Set; 2 1/2" diam. alum. cap on a 2 1/2"x30" alum. pipe w/flare at bottom at corner and buried cornerstone alongside pipe. Cap mkd. per sketch. 9" D.B.H. Lodgepole Pine, S.11 1/2°W., 116.3' scribed T7SR34ES1BT. 11" D.B.H. Lodgepole Pine, N.89 1/2°W., 19.0', scribed T6SR34ES36BT. 7" D.B.H. Lodgepole Pine, N. 43°E., 76.9' scribed T6SR35ES31BT. 21" D.B.H. Spruce, S.20 1/2°E., 99.8', scribed T7SR35ES6BT.
6. 1/4 Cor. Sec's. 36,1. Fd. Post gone. Down and badly rotted tree w/scribes 1/4S3BT & 2 chaining notches. S.38°W., 46.2' (S.38°W., 70 lks., 46.2') N.E. B.T. gone. Old creek channel, North, 7'±. Meadow Creek, N., 50'. Set; A 2 1/2" diam. alum. cap on a 2 1/2"x30" alum. pipe at record bearing and distance from remaining B.T. Cap mkd. per sketch. 13" D.B.H. Lodgepole Pine, S. 87°E., 10.0', scribed 1/4S1BT. 9" D.B.H. Lodgepole Pine, N. 10°E., 15.7', scribed 1/4S36 BT.
7. Cor. Sec's. 1,2,35,36. Fd. stone 19"x11"x8" (20"x10"x8"), on top of grad. & out of position, no marks. 12" D.B.H. Lodgepole Pine, (8") N.24°W., 37.62', dead and down w/scribing. 20" D.B.H. Lodgepole Pine (10") S.45°W., 25.74', w/scribes, dead and down. 11" D.B.H. (10") Lodgepole Pine, S.76°E., 141.24', w/scribes T7SR34ES1BT on a partially healed face. Dead and down. No trace of N.E. B.T. Set; 2 1/2" diam. alum. cap on a 2 1/2"x30" alum. pipe at corner. Set at record distance from B.T.'s. Cap marked per sketch. Set steel posts 4'± N. & E. w/signs. 8" D.B.H. Lodgepole Pine, S.62°E., 84.7', scribed T7SR34ES1BT. 8" D.B.H. Lodgepole Pine, S.10 1/2°W., 81.44', scribed T7SR34ES2BT. 12" D.B.H. Lodgepole Pine, N.79°W., 82.8', scribed T6SR34ES35BT. 6" D.B.H. Lodgepole Pine, N.17 1/2°E., 19.8' scribed T6SR34ES36BT. Bearings and distances to found B.T.'s. are the same as G.L.O. All B.T.'s. set by me have a brass washer mkd. RPLS 1910 set between B&T. All B.T.'s. have B.T. tags, attn. signs, bands and faces painted red. Distances from corners to B.T.'s. are to center of tree 1 foot above root crown.

NARRATION

The corners to section 36 were set in 1883 by Frank W. Campbell under Contract No. 468 dated April 12, 1883. This survey was performed for the Umatilla National Forest in Section 36, Township 6 South, Range 34 East, Willamette Meridian, Umatilla County, Oregon, to monument the Section Corners and post the property lines. Bearings are based on a solar observation about 1000 feet North of the East 1/4 Corner of S.2, T.7S., R.34E. I ran a random traverse from the SW corner of Sec. 36 to the NW Corner and looped back to the W 1/4 Cor. then I ran from the SW corner along the South line to the SE corner then North to the E. 1/4 corner and through the middle of the section to the W 1/4 corner connecting all corners to the traverse, closed and balanced traverse. Error of closure 1:29,000. A thorough search was made for the W. 1/4 cor. but no original evidence was found. After determining the land ties to be in error, I then set the corner from the traverse at single proportionate measure. Then I set the other monuments and posted the property lines. I used a JENA 620 A THEODOLITE with a CITATION 450 E.D.M. to perform my survey.



- MONUMENT SET FROM ORIGINAL EVIDENCE
- MONUMENT SET BY SURVEY
- LLL POSTED LINE
- G.L.O. GENERAL LAND OFFICE
- () RECORD
- DIAM. DIAMETER
- D.B.H. DIAMETER BREAST HEIGHT
- MAG. MAGNETIC
- FD. FOUND
- B.T. BEARING TREE
- MON. MONUMENT
- CHS. CHAINS
- LKS. LINKS
- MKD. MARKED
- RR. RIDGE
- DECL. DECLINATION



I, CLAYTON J. MARTIN, A REGISTERED LAND SURVEYOR IN THE STATE OF OREGON, CERTIFY THAT THIS PLAN IS A CORRECT REPRESENTATION OF A SURVEY I PERFORMED DURING SEP.-OCT., 1986, AT THE REQUEST OF THE U.S. D.A. FOREST SERVICE IN ACCORDANCE WITH THE STATUTES OF THE STATE OF OREGON, AND THE B.L.M. MANUAL OF SURVEYING INSTRUCTIONS, 1973.
 Clayton J. Martin L.S. 1910

**SURVEY FOR UMATILLA NATIONAL FOREST
 FORKS 1985 CADASTRAL SURVEY CONTRACT NO. 53-04R3-5-1462
 SEC.36, T.6 S.R.34 E., WM, UMATILLA CO., OR.
 SCALE: 1"=500' SEP.-OCT., 1986
 SURVEYOR C.J. MARTIN LS1910
 CHAINMAN P.D. THRASH**

RECEIVED BY
 Umatilla County Surveyor
 Date 12-22-86
 Rec'd By RA
 No. 86-141-B

TRAVERSE, MONUMENT, POSTING, TOPO-
 TIES, SEE BOOK I.