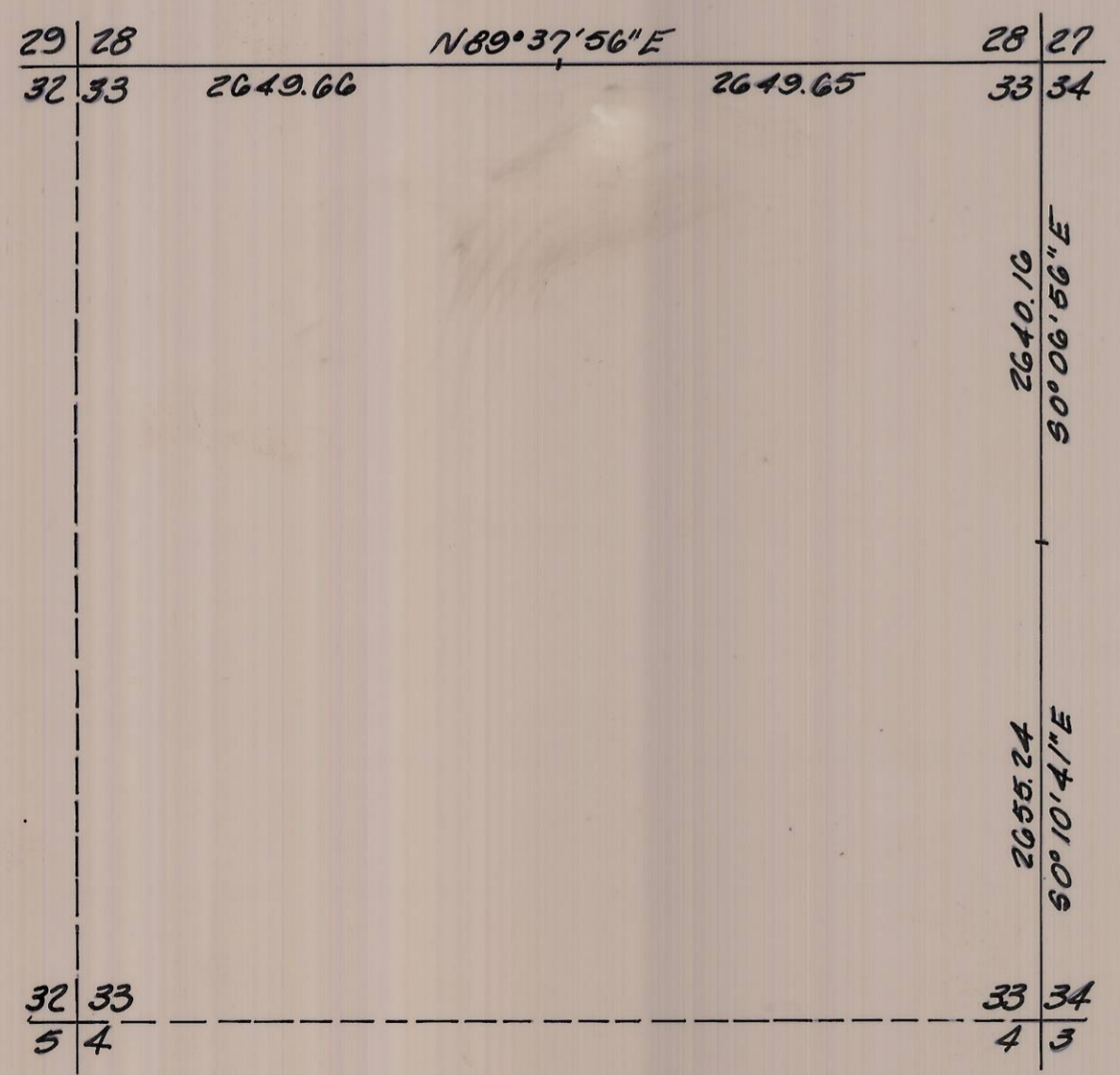


**NARRATIVE:**

The purpose of this survey was to partition off a 5.00 acre parcel in the Northeast one-quarter of Section 33, Township 1 North, Ranges 35 East, W.M. for Triple L Enterprises.  
 The district office of the Oregon State Highway Department had coordinates for the NW, N<sup>1</sup>/<sub>4</sub>, E<sup>1</sup>/<sub>4</sub>, and SE corner of Section 33 on survey work for the Meacham gravel pit. They also had coordinates for the NE, E<sup>1</sup>/<sub>4</sub>, and SE corner of Section 33 on survey work done for 1-84. By combining these coordinate values and work by Don Staebler as shown on County Surveyor Drwg. No. F-24 and the Plat of Papoose Woodlands we were able to establish the centerline of Old Highway 30 and the East line of Section 33.  
 Bearings are based upon County Surveyor Drwg. No. F-24.



**R Curve Data**  
 ① r= 1004.93  
 A= 96.62  
 T= 48.29  
 ch= 96.48  
 N26°06'34\"W  
 ② r= 1382.39  
 A= 309.02  
 T= 155.16  
 ch= 308.38  
 N28°45'45\"W

- denotes 5/8" x 30" iron pin with aluminum cap set, stamped PLS 933
- denotes monument found as noted

SECTION 33, TIN, R35E, W.M.  
 scale: 1" = 1000'

<b>KRUMBEIN ENGINEERING LTD.</b> ENGINEERS - SURVEYORS - PLANNERS 361 S.E. Second Pendleton, Oregon	Scale 1" = 200'	Drn. By MLD	Drng. No. 83-52C	Revision 1
	Date 12-20-83	Ckd. By DMM	Job No. 83-149	Revision 2
Survey for <b>TRIPLE L ENTERPRISES</b>		RECEIVED BY Umatilla County Surveyor Date 4/5/84 Rec'd by <i>bc</i> No. 84-34-B		
NE <sup>1</sup> / <sub>4</sub> , Sec. 33, T1N, R35E, W.M.				