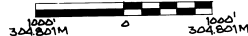
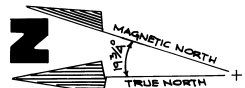


TOWNSHIP 3 SOUTH, RANGES 31 & 32 EAST, W.M., UMATILLA COUNTY, OREGON
NATIONAL FOREST BOUNDARY SURVEY AND POSTING

LEGEND

- SET 2 1/2" O.D. GALV. IRON PIPE 30" LONG WITH 2 1/2" BRASS CAP FROM EXISTING EVIDENCE.
- SET 2 1/2" O.D. GALV. IRON PIPE 30" LONG WITH 2 1/2" BRASS CAP BY TRAVERSE SURVEY.
- FOUND BRASS CAP ON 2 1/2" IRON PIPE SET BY BLM FROM EXISTING ORIGINAL EVIDENCE.
- FOUND BRASS CAP ON 2 1/2" IRON PIPE SET BY PLS 1051.
- U.S. FOREST BOUNDARY - BOUNDARY POSTED
- || 2.3| MEASURED DISTANCE IN METERS.
- ROADS OR FENCES ALONG TRAVERSE LINE.

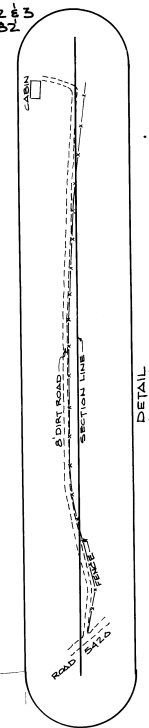
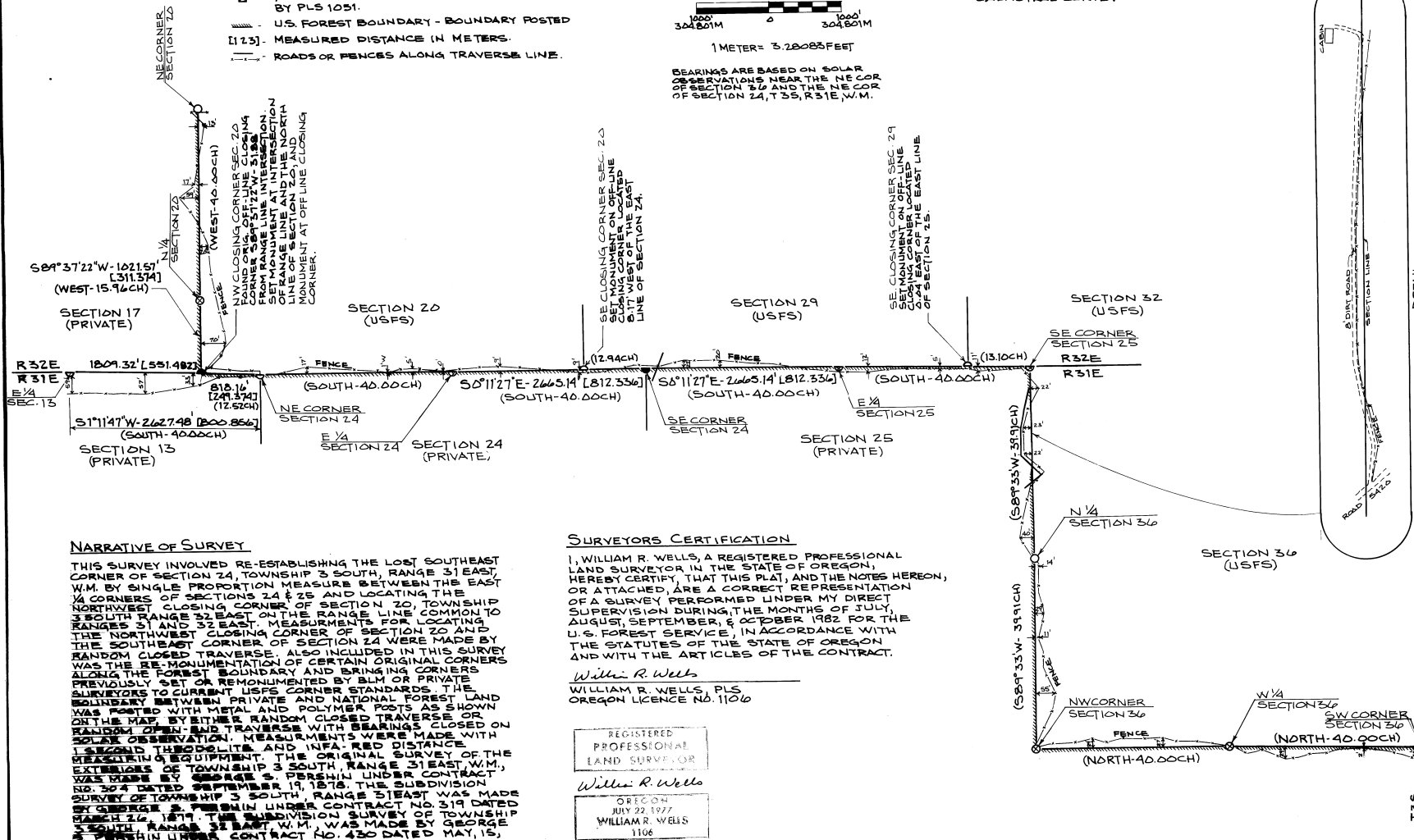


BEARINGS ARE BASED ON SOLAR OBSERVATIONS NEAR THE NE COR OF SECTION 24 AND THE NE COR OF SECTION 25, T 3S, R 31E, W.M.

NOTES

ALL BEARINGS AND DISTANCES IN PARENTHESIS ARE RECORD BEARINGS AND DISTANCES. FOR ADDITIONAL INFORMATION ON CORNERS RECOVERED OR MONUMENTED, SEE CERTIFIED RECORD OF LAND CORNER MONUMENTATION FILED HEREWITH.

FIELD BOOK REFERENCE - TRAVERSE BOOK #1, 2 & 3 AND MONUMENTATION BOOK #1 OF THE RILEY 1982 CADASTRAL SURVEY.



NARRATIVE OF SURVEY

THIS SURVEY INVOLVED RE-ESTABLISHING THE LOST SOUTHEAST CORNER OF SECTION 24, TOWNSHIP 3 SOUTH, RANGE 31 EAST, W.M. BY SINGLE PROPORTION MEASURE BETWEEN THE EAST 1/4 CORNERS OF SECTIONS 24 & 25 AND LOCATING THE NORTHWEST CLOSING CORNER OF SECTION 20, TOWNSHIP 3 SOUTH RANGE 32 EAST ON THE RANGE LINE COMMON TO RANGES 31 AND 32 EAST. MEASUREMENTS FOR LOCATING THE NORTHWEST CLOSING CORNER OF SECTION 20 AND THE SOUTHEAST CORNER OF SECTION 24 WERE MADE BY RANDOM CLOSED TRAVERSE. ALSO INCLUDED IN THIS SURVEY WAS THE RE-MONUMENTATION OF CERTAIN ORIGINAL CORNERS ALONG THE FOREST BOUNDARY AND BRINGING CORNERS PREVIOUSLY SET OR REMONUMENTED BY BLM OR PRIVATE SURVEYORS TO CURRENT USFS CORNER STANDARDS. THE BOUNDARY BETWEEN PRIVATE AND NATIONAL FOREST LAND WAS POSTED WITH METAL AND POLYMER POSTS AS SHOWN ON THE MAP. EITHER RANDOM CLOSED TRAVERSE OR RANDOM OPEN END TRAVERSE WITH BEARINGS CLOSED ON SOLAR OBSERVATION. MEASUREMENTS WERE MADE WITH 1 SECOND THEODOLITE AND INFA-RED DISTANCE MEASURING EQUIPMENT. THE ORIGINAL SURVEY OF THE EXTENSIONS OF TOWNSHIP 3 SOUTH, RANGE 31 EAST W.M., WAS MADE BY GEORGE S. PEREHRIN UNDER CONTRACT NO. 304 DATED SEPTEMBER 19, 1875. THE SUBDIVISION SURVEY OF TOWNSHIP 3 SOUTH, RANGE 31 EAST WAS MADE BY GEORGE S. PEREHRIN UNDER CONTRACT NO. 319 DATED MARCH 26, 1879. THE SUBDIVISION SURVEY OF TOWNSHIP 3 SOUTH, RANGE 31 EAST W.M. WAS MADE BY GEORGE S. PEREHRIN UNDER CONTRACT NO. 430 DATED MAY, 15, 1882.

SURVEYORS CERTIFICATION

I, WILLIAM R. WELLS, A REGISTERED PROFESSIONAL LAND SURVEYOR IN THE STATE OF OREGON, HEREBY CERTIFY THAT THIS PLAN, AND THE NOTES HEREON, OR ATTACHED, ARE A CORRECT REPRESENTATION OF A SURVEY PERFORMED UNDER MY DIRECT SUPERVISION DURING THE MONTHS OF JULY, AUGUST, SEPTEMBER, & OCTOBER 1982 FOR THE U.S. FOREST SERVICE, IN ACCORDANCE WITH THE STATUTES OF THE STATE OF OREGON AND WITH THE ARTICLES OF THE CONTRACT.

William R. Wells

WILLIAM R. WELLS, PLS
OREGON LICENCE NO. 11010

REGISTERED
PROFESSIONAL
LAND SURVEYOR

William R. Wells
OREGON
JULY 22 1977
WILLIAM R. WELLS
1106

WALLULIS PROJECT NO.	82-109	AGENCY PROJECT NO.	USFS CONTRACT NUMBER 53-0493-2-01264 FG-14-82-16
PROJECT	RILEY '82 CADASTRAL SURVEY PERFORMED FOR US FOREST SERVICE UMATILLA NATIONAL FOREST		
SCALE 1"=1000'	DATE	DES BY	DR BY
	11/3/82		WRW
		CK BY	WRW
TITLE UMATILLA COUNTY T 3S R 31E W.M. SEC. 13, 24, 25 & 36, T 3S R 32E W.M. SEC 20, 29 & 32.			
REVISIONS			
DRAWING RECEIVED 11 Umatilla County July 1982 Date 8-2-82 Re: 1 My BLS No. 82-137-2-B Sheet 1 of 1			