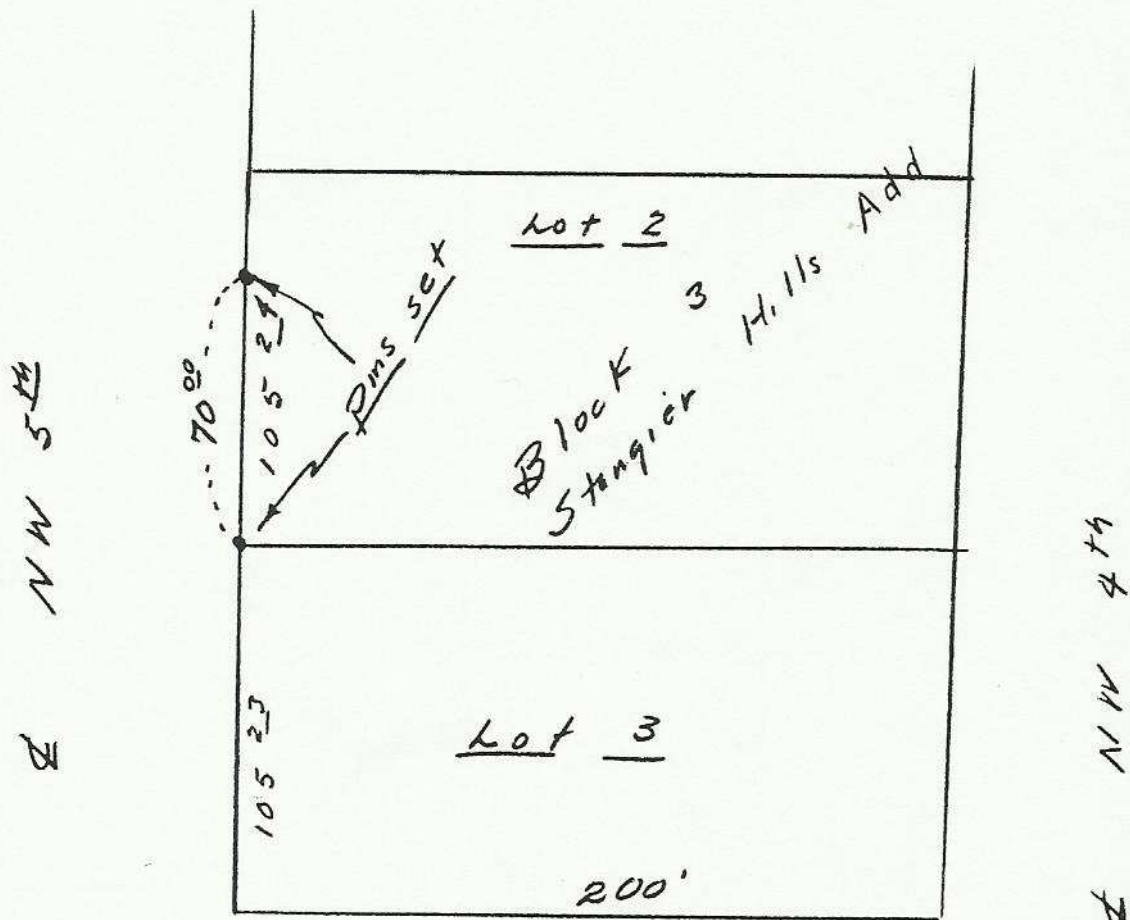


Field Notes

Survey for: Inland Builders
By : Vernon B. Tenneson & Associ.
Location : "Stungier Hills Add" Pendleton
Fraction of Lot #2 BIK #3

We used control points established by a prior survey; (see field notes filed Oct 31 1955) on Survey for "Inland Builders" See sketch below for points set.



NW Ingram

2N 32 3 DA

Stanley & Hallibur

Q-1459-Ax