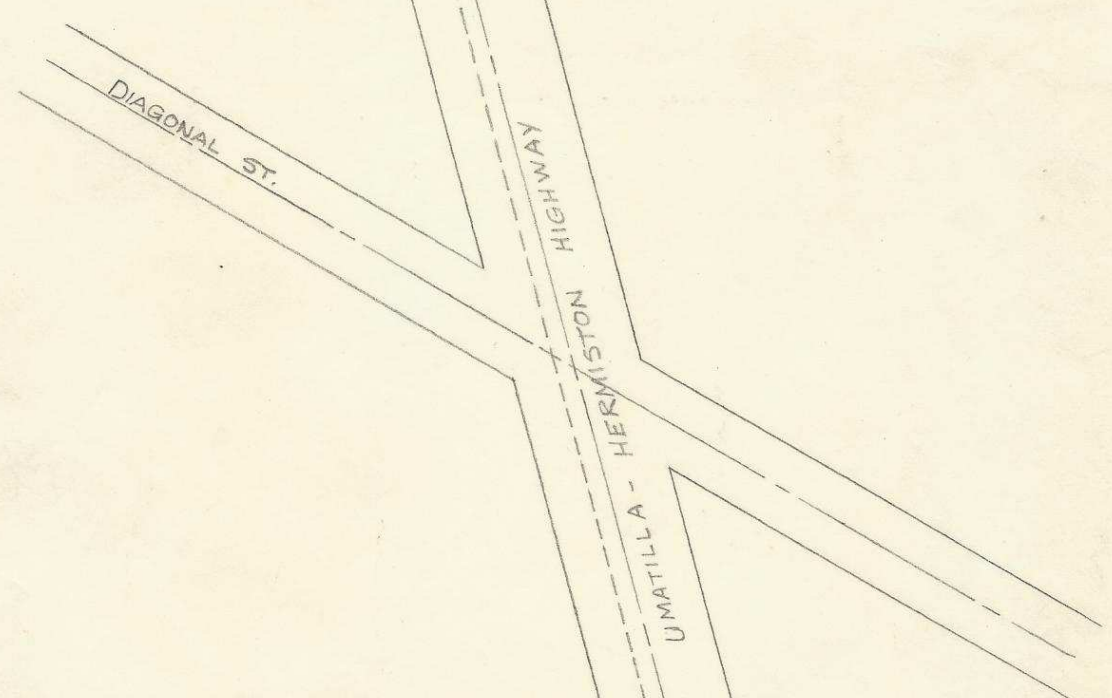
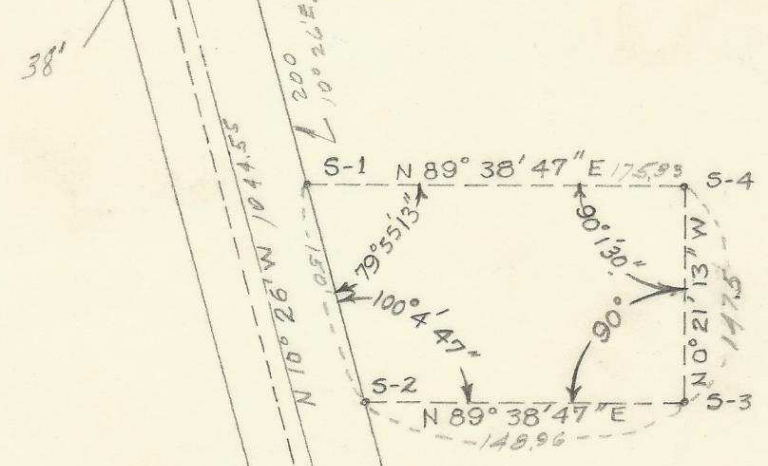
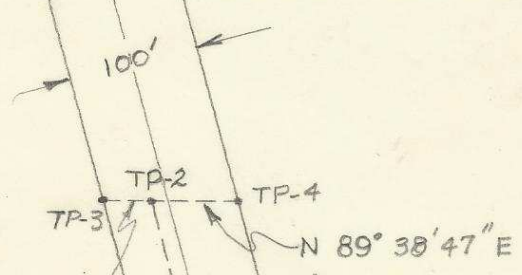


M-3
5/8" IRON POST
MARGARET ST.



Post Sta 44+24.2
CONCRETE MON. M-1 TP-1 M-2
CONCRETE HIGHWAY MONUMENT

Q-1272-Ax

747

Resurvey to establish corners of property of Mrs. Agnes E. Smith located SW $\frac{1}{4}$ SW $\frac{1}{4}$ Section 15, T5N, R28, E.W.M. East side Umatilla-Hermiston Highway opposite Arkell Addition, Umatilla, Oregon.

Date: August 17, 1948
Weather: Clear and hot.

Party: F. Ofner
H. Keizur

Set up at Concrete Highway monument Post Sta. 44+24.2 on NW intersection of property lines of Umatilla-Hermiston Highway and County road No. 620, back sight on bearing S 89°28'E to concrete highway monument at NE intersection of property lines of Umatilla-Hermiston Highway and County road No. 620. Chain 38 ft. on bearing S 89°28'E to turning point No. 1.

Set up at turning point No. 1, back sight on starting point, turn 79°02' to bearing N 10°26'W. Chain 1044.55 ft. on bearing N 10°26'W to turning point No. 2.

Set up at turning point No. 2, back sight on turning point No. 1, turn 100°58' to bearing N 89°28'W. Chain 38 ft. on bearing N 89°28'W to turning point No. 3.

Set up at turning point No. 3, back sight on monument (5/8" iron post) at NW intersection of Umatilla-Hermiston highway and Margaret St., turn 100°4'47" to bearing N 89°38'47"E. Chain 101.85 ft. on bearing N 89°38'47"E to turning point No. 4.

Set up at turning point No. 4, back sight on turning point No. 3, turn 100°4'47" to bearing S 10°26'E. Chain 200 ft. on bearing S 10°26'E to NW corner of property. Drove wood stake to mark corner.

Set up at NW corner, back sight on turning point No. 4, turn 180° to bearing S 10°26'E. Chain 150 ft. on bearing S 10°26'E to SW corner of property. Drove wood stake to mark corner.

Set up at SW corner, back sight on NW corner, turn 100°4'47" to bearing N 89°38'47"E. Chain 148.96 ft, on bearing N 89°38'47"E to SE corner of property. Drove wood stake to mark corner.

Set up at SE corner, back sight on SW corner, turn 90° to bearing N 0°21'13"W. Chain 147.5 ft. on bearing N 0°21'13"W to NE corner of property. Drove wood stake to mark corner.

Set up at NE corner, back sight on SE corner, turn 90° 01'30" to bearing S 89°37'17"W. Chain 175.33 ft. on bearing S 89°37'17"W to close at NW corner of property.