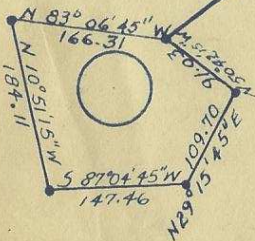


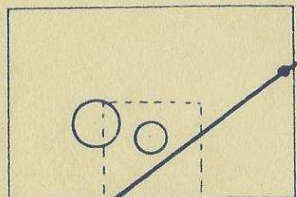
G-865-Ax



New Reservoir



S 53° 23' 45" W  
676.77



25 Foot Wide Easement

S 59° 12' W  
350.00

S 68° 00' W  
487.60

S 16° 20' E  
132.00

WEST  
SOUTH  
20.00

WILLOW ST.  
400.00

PILOT ROCK

ST.

Monument

MAIN  
DIXIE

CITY OF

LEGEND

• 1/2" X 24" Steel Rod

NE 17



Revised: March 29, 1957 503  
 SCALE: 1" = 200'  
 DATE: 5-14-56

**WALL AND TENNESON**  
 Engineers  
 The Dottie Pendleton Oregon