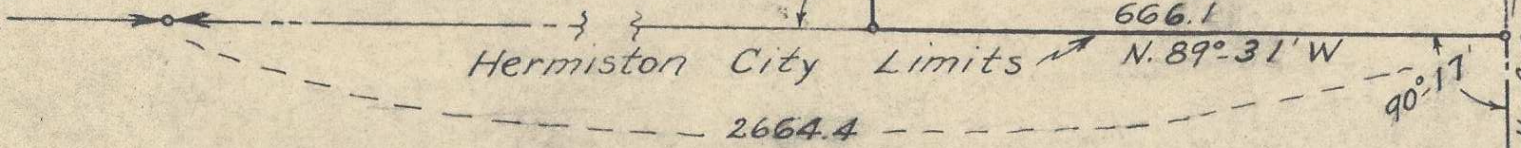


Q-625-Ax

SUB-DIVISION OF
E. 1/2 OF N.E. 1/4 OF THE N.E. 1/4
SEC. 11, T. 4 N., R. 28 E., W.M.
SCALE: 1" = 200'



1/16 Cor.
1/2" I.P.



Carl R. Jralog
No. 183

Hermiston City Limits

To S.E. Cor. Sec. 11
3986.9 ft.

ORIGINAL COPY