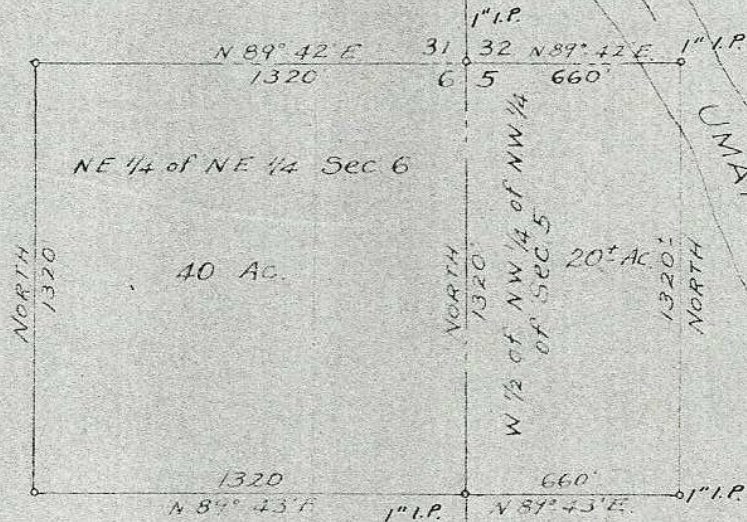


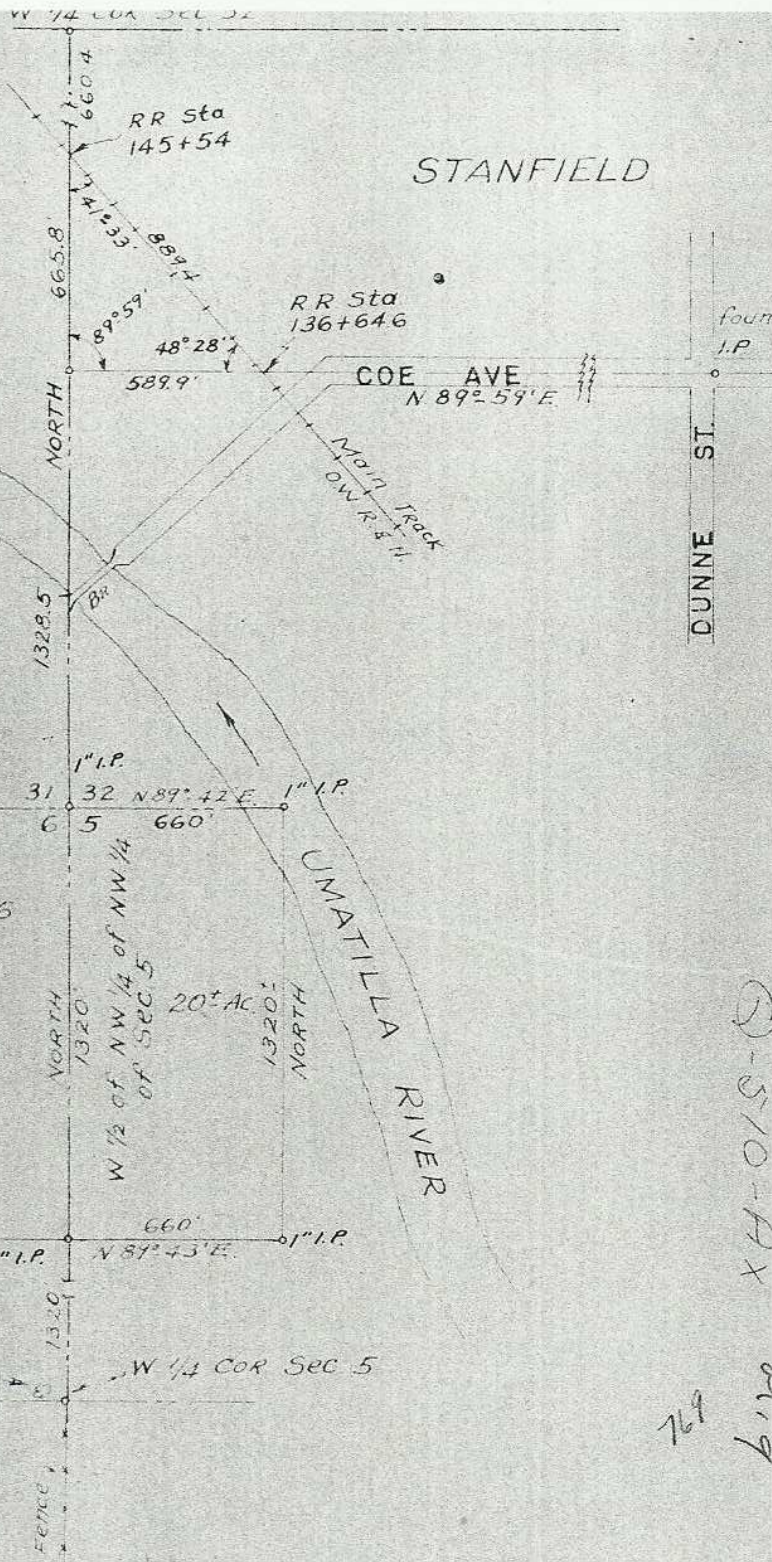
MAP OF 60 ACRES
 IN SECTIONS 5 AND 6
 T. 3 N., R. 29 E., W.M.
 Near Stanfield, Umatilla Co., Ore.

SCALE: 1" = 500'

Surveyed by Veri R Fraley Sept 15, 1949
 Reg. Land Surveyor No. 183



Found 30" Balm tree
 bears N 80° W. 10 links dist



5-510-AX
 269
 6-19

Field Notes

For survey of 60 acres near Stanfield, Umatill County, Oregon. In Sections 5 & 6 T.3 N., R 29 E., W. M.

also Found $3/4$ " Iron pipe at centerline Coe Ave, and the west line of wayne St
Found $3/4$ Iron Pipe at centerline Coe Ave, and the East line of Dunne St.
Established line between these two reliable points and produced the line S. $89^{\circ}-59'W.$ to an intersection with the centerline of the O.W.RR& N Main line. From a R. R. tie to the desired section corners, which were the W. $\frac{1}{4}$ corner of Sec. 32, T 3N. R 29 E. W. M. and the S. W. Cor of the said section 32, I computed all necessary distances. All bearings were taken from the original Gov't Field notes. From the centerline of the R.R. I produced my line S. $89^{\circ}-59'W.$ 589.9 feet and set a hub from where I ran due South 1328.5 feet and set a 1"-30" Iron pipe for the sec. corner 31-32-6-5. Found no trace of any original corner. Produced the line on South, at 1320 feet in a fence line set a 1"-30" Iron pipe for a 1/16 corner. Produced the line on South, at 1320 feet found a fence corner from which I found a 30" Balm tree bearing N. $80^{\circ} W.$ 6.5 ft. distant. Bearing marks were clearly discernable on this tree and it conforms exactly with a bearing tree as described in the original Gov't field notes. Found no trace of any $\frac{1}{4}$ corner at this point, although the fence corner is apparently very close to the original corner. From the section corner 31-32-5-6, which I previously set I ran N. $89^{\circ}-42' E.$ 660 feet and set a 1"-30" iron pipe in the middle of the Umatilla River. From the 1/16 corner between the section corner 31-32-5-6 and the W. $\frac{1}{4}$ corner of Sec. 5, I ran N. $89^{\circ}-43' E.$ 660 feet and set a 1"-30" Iron pipe. Set no other points for the 40 acre tract, but used existing fence lines, which have been in place for a considerable length of time.