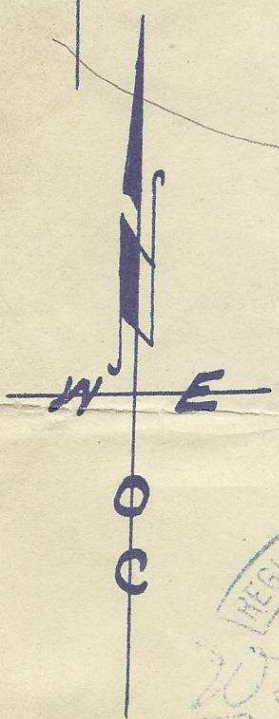
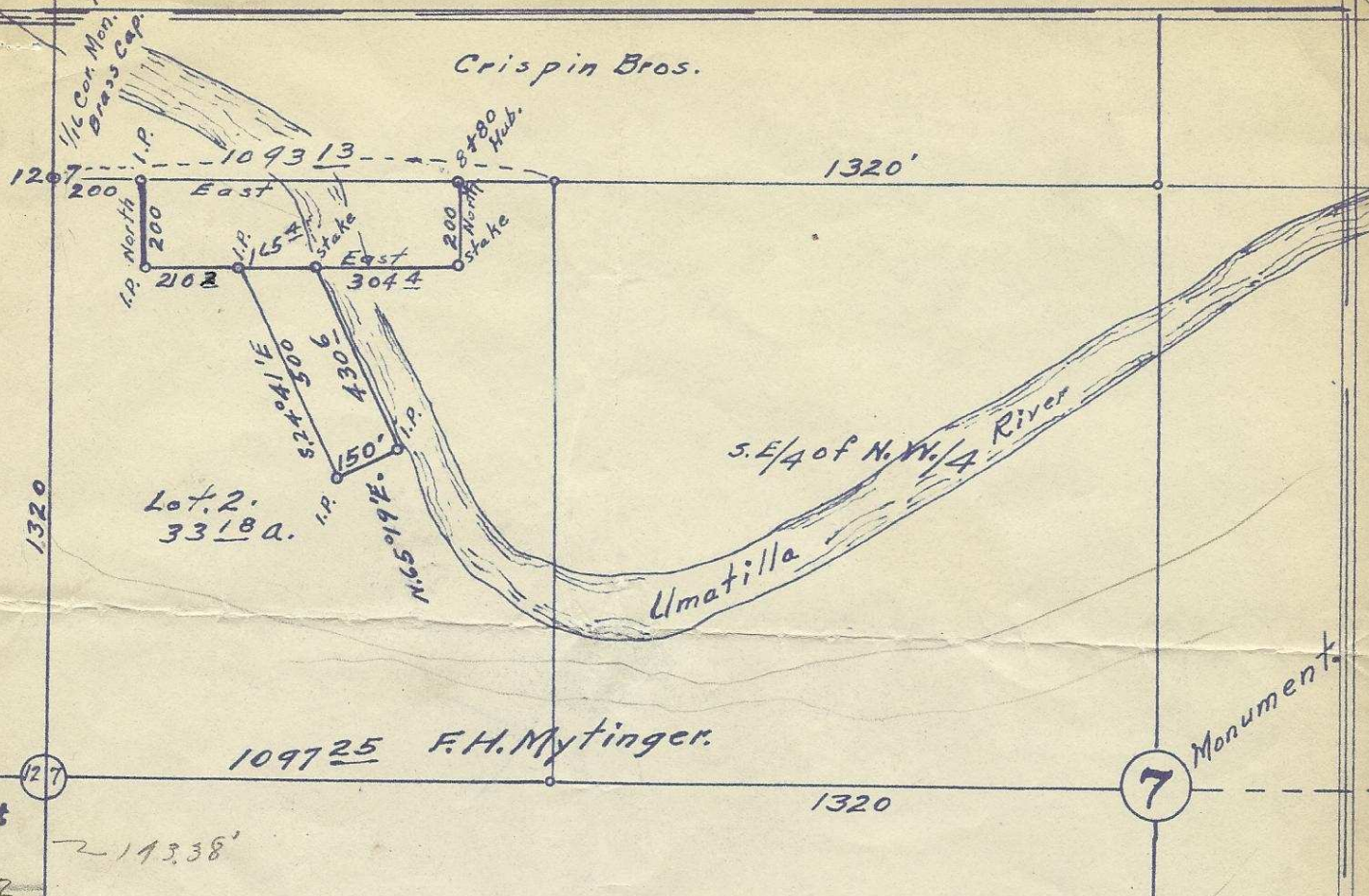


OK 19 Q-46 V-A



REGISTERED PROFESSIONAL
ENGINEER
1491

W. E. O. Criger

OREGON

MAR 9 1931

W. E. O. CRIGER

Map of
1/2 of N.W. 1/4 of Sec. 7, T 2 N, R 33 E, Y.M.
surveyed, staked & platted July-1950
also Sept. 1950 - By H. L. Melton - W.E.O.C.
Scale: 1" = 400'

952

T. 6 - T. 1 - E. 1 - Sec. 12 - N. 1/4 - 10