

Q-407-Ax orig

# PLAT OF SURVEY FOR ROBERT R. FEUCHT

IN

T. 2 N; R. 32 E; W.M

NW<sup>4</sup>NW<sup>4</sup>12

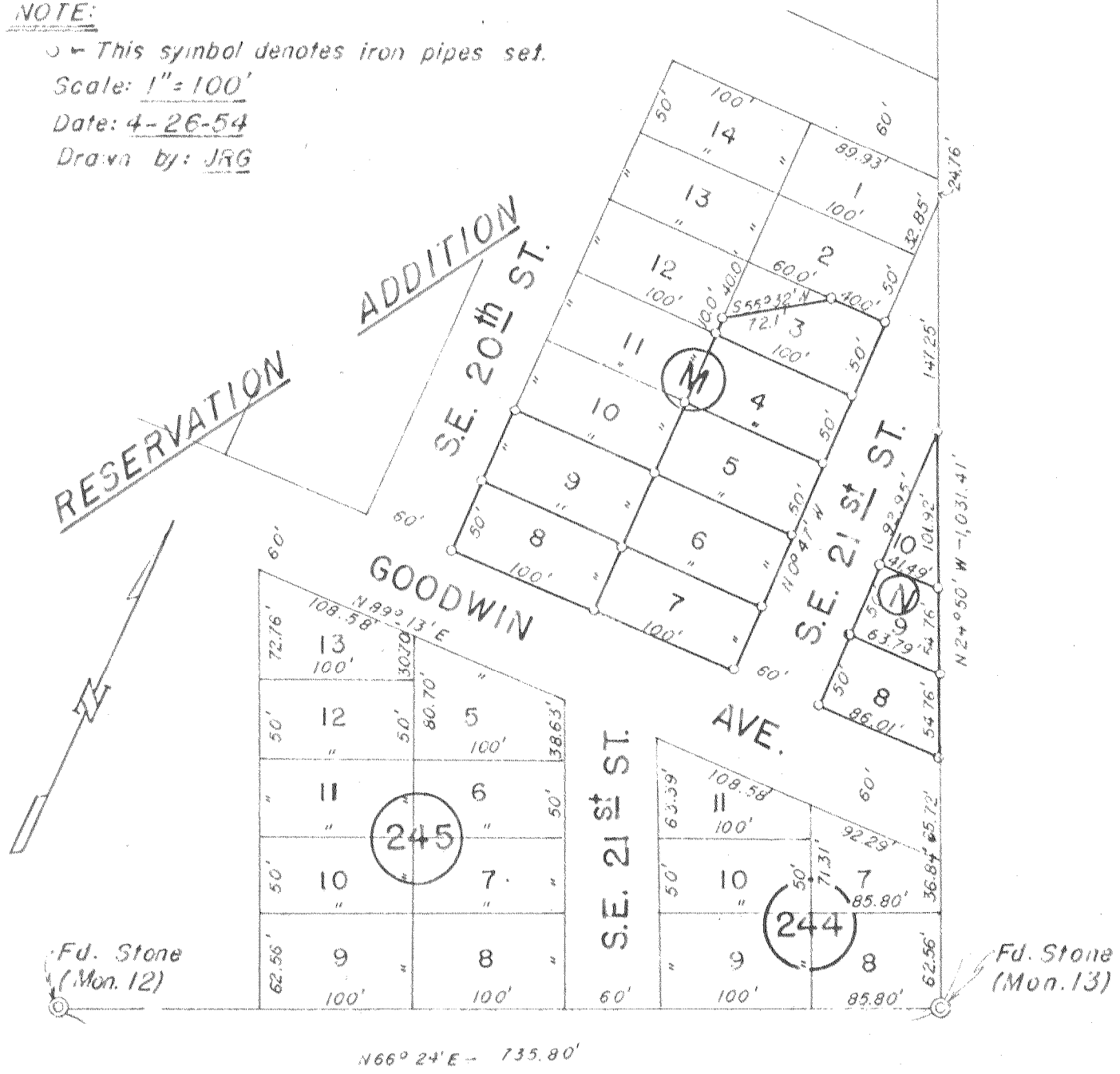
IN PENDLETON, UMATILLA  
COUNTY, OREGON



Fd. Stone  
(Mon. 14)

**NOTE:**

- This symbol denotes iron pipes set.
- Scale: 1" = 100'
- Date: 4-26-54
- Drawn by: JRG



155

N66° 24' E - 735.80'