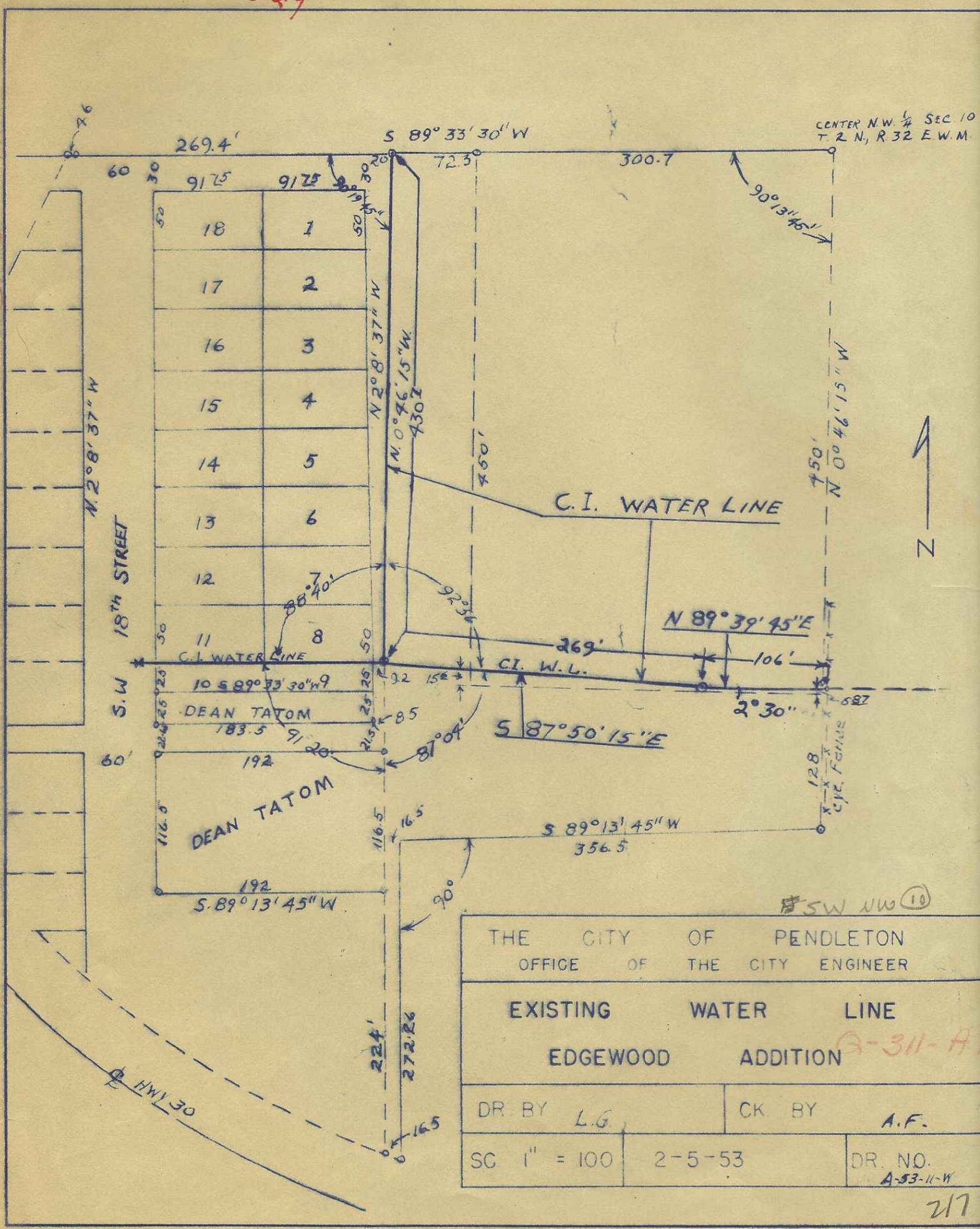


Orig

9-311-A



CENTER N.W. 1/4 SEC 10
T. 2 N., R. 32 E. W.M.



THE CITY OF PENDLETON		
OFFICE OF THE CITY ENGINEER		
EXISTING WATER LINE		
EDGEWOOD ADDITION		
DR. BY	L.G.	CK. BY
		A.F.
SC	1" = 100	2-5-53
DR. NO.	A-53-11-W	

3-311-A