

Q-256-Ax

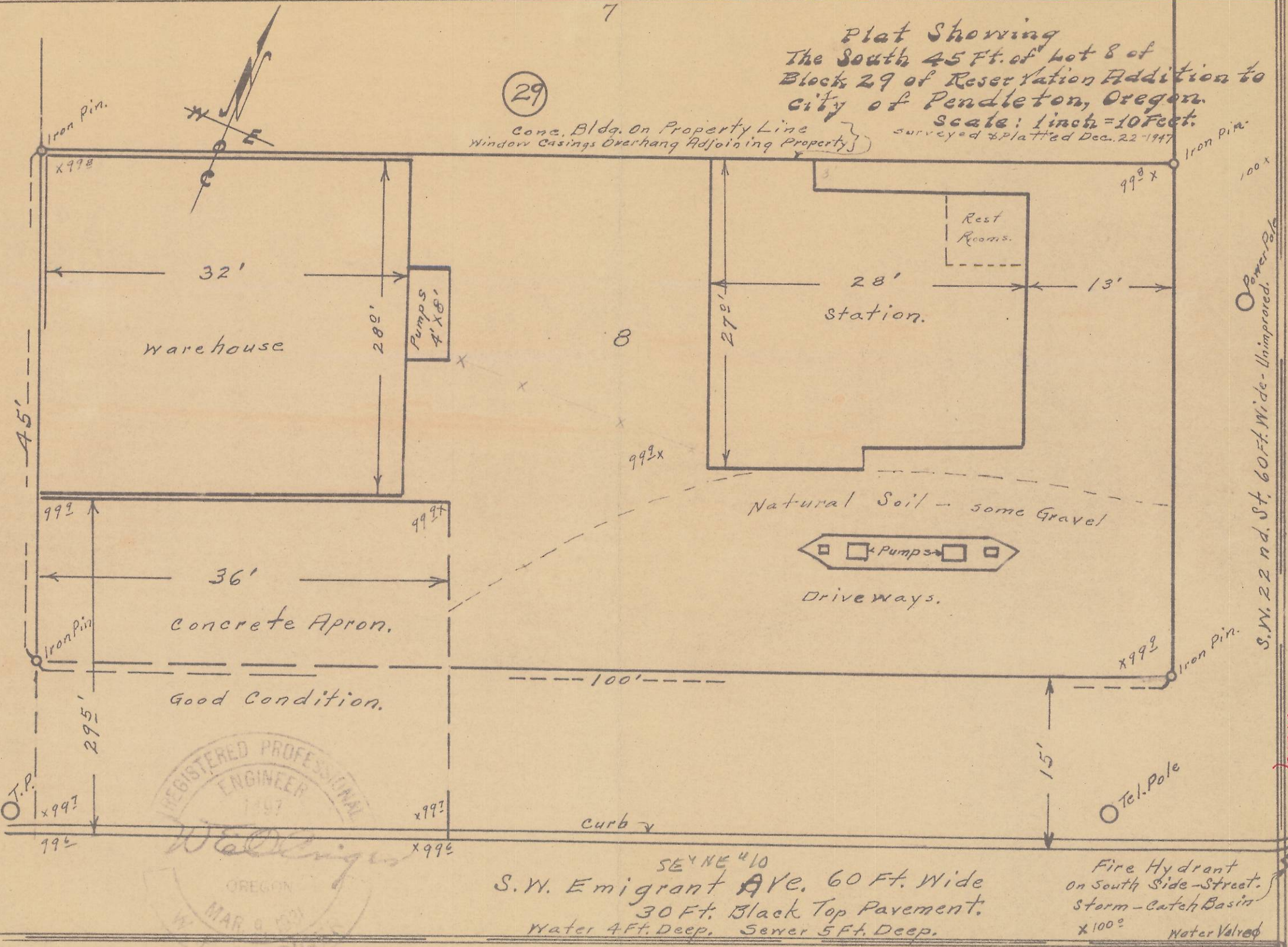
7

Plat Showing
The South 45 Ft. of Lot 8 of
Block 29 of Reservation Addition to
City of Pendleton, Oregon.

Scale: 1 inch = 10 feet.
Surveyed & Platted Dec. 22-1947

29

Conc. Bldg. on Property Line
Window Casings Overhang Adjoining Property



SE & NE 10
S.W. Emigrant Ave. 60 Ft. Wide
30 Ft. Black Top Pavement.
Water 4 Ft. Deep. Sewer 5 Ft. Deep.

Fire Hydrant
On South Side - Street.
Storm - catch Basin
x 100°
Water Valve

Q-256-Ax

S.W. 22 nd. St. 60 Ft. Wide - Unimproved.

DRY