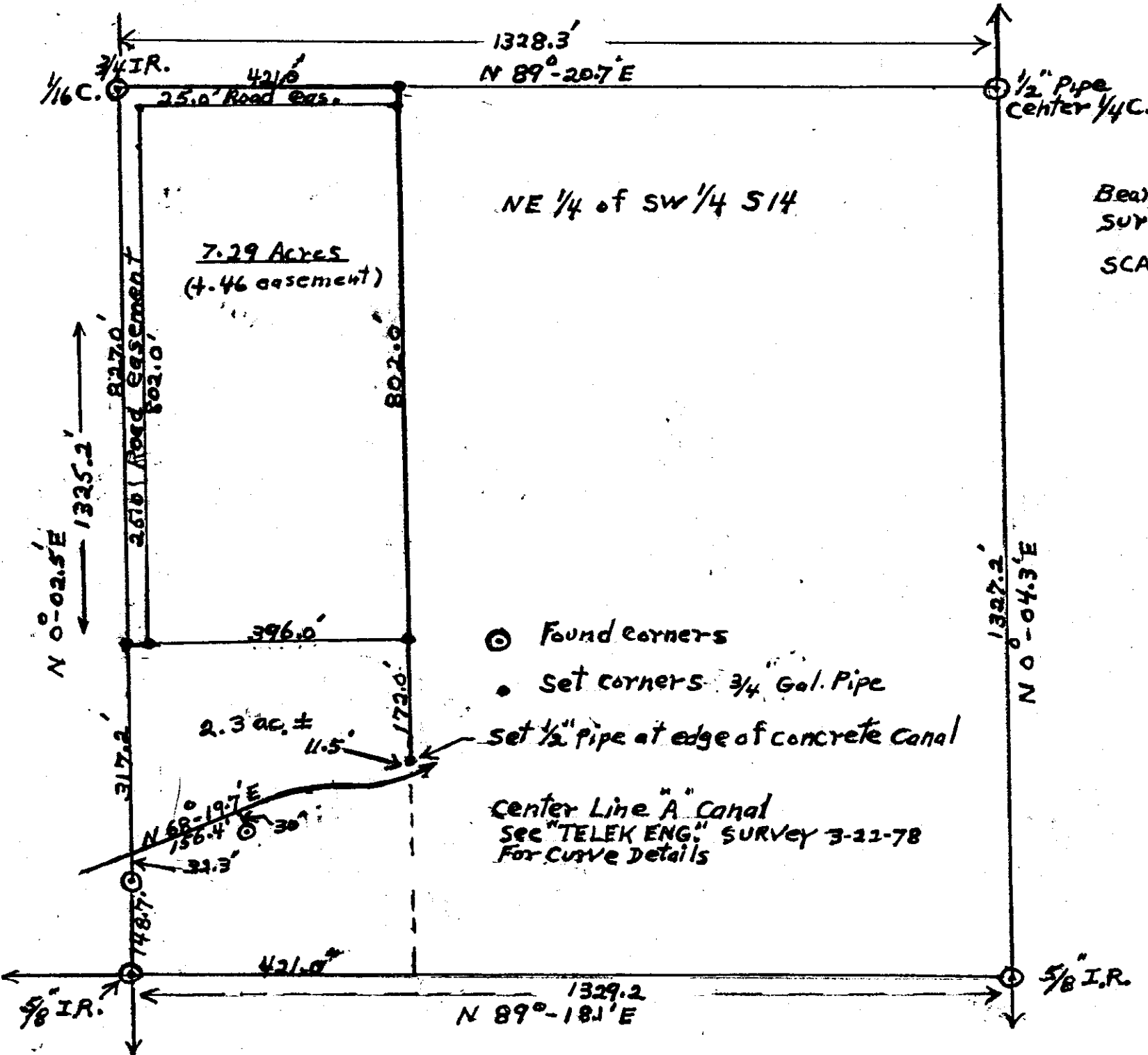


RECEIVED BY  
 Umatilla County Surveyor  
 Date 1-7-79  
 Rec'd By S. Barth  
 No. Q-35-A

Q-35-A



Bearings are those of "TELEK ENG."  
 Survey of Record 3-22-78.  
 SCALE: 1" = 200'

- ⊙ Found corners
  - set corners 3/4 Gal. Pipe
  - set 1/2" pipe at edge of concrete canal
- Center Line "A" Canal  
 See "TELEK ENG." SURVEY 3-22-78  
 For Curve Details



PLS No. 1423-LS

SURVEY FOR HARRY LANE  
 S14, T4N, R28, EWM  
 NE 1/4 of SW 1/4  
 ISSUE 2 12-10-78