

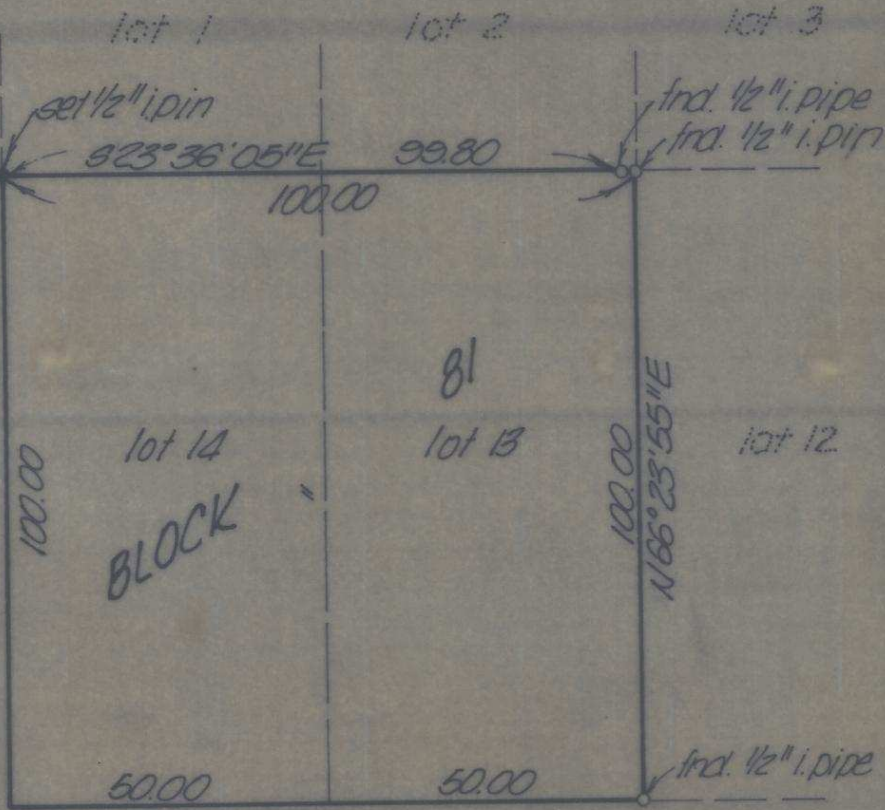
frnd. Brass Cap
MAIN STREET

AVE.
EMIGRANT

650.00
N66°23'55"E

S.W.

frnd. bolt



S.W. 9TH STREET

REGISTERED
PROFESSIONAL
LAND SURVEYOR

David H. Krumbein
OREGON
JULY 17, 1970
DAVID H. KRUMBEIN
933

K KRUMBEIN ENGINEERING CO.
ENGINEERS - SURVEYORS - PLANNERS
221 S. Main, Pendleton, Oregon

Survey for
DEL NEWSON

lots 13 & 14, blk. 81, "Reservation Add'n.", Pendleton

SCALE	1"=30'
DATE	Feb 13, 1978
DRN BY	PL.S.
CKD BY	J.R.S.
DRNG. NO.	#78-26 A

P-25 Job No. 78-43

P-25