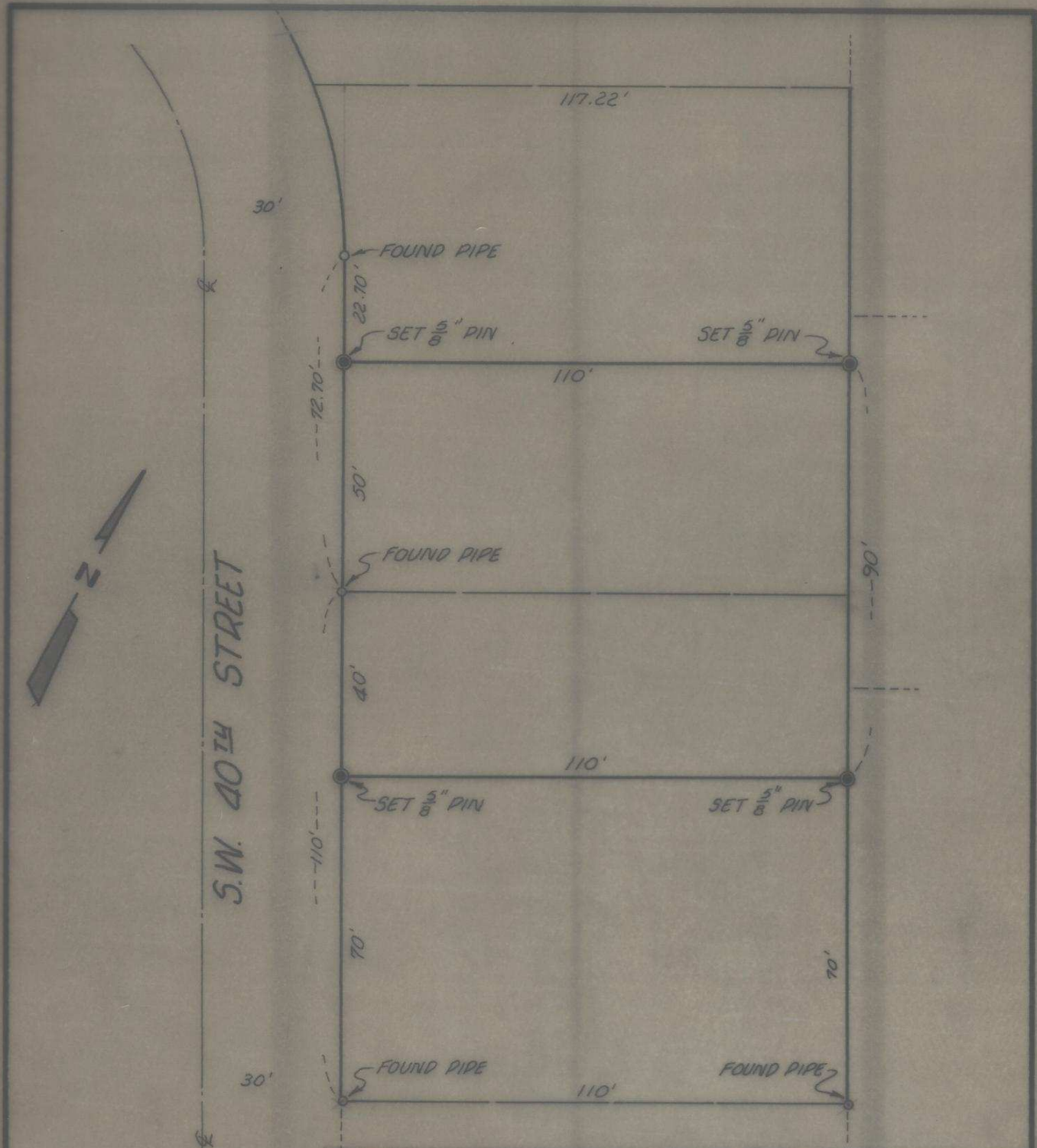


77-146



S.W. 40TH STREET

REGISTERED
PROFESSIONAL
LAND SURVEYOR

David H. Krumbein

OREGON
JULY 17, 1970
DAVID H. KRUMBEIN
933

KRUMBEIN ENGINEERING CO.
ENGINEERS - SURVEYORS - PLANNERS
221 S. Main, Pendleton, Oregon

SURVEY FOR DENNIS LINDNER
LOTS 5, 9, & 10, BLOCK 3, MONTEE ADDITION
PENDLETON, OREGON

SCALE 1"=30'
DATE 7-1-77
DRN. BY W. J. R.
CKD BY
DRNG. NO. 77-804

N-49-Ax