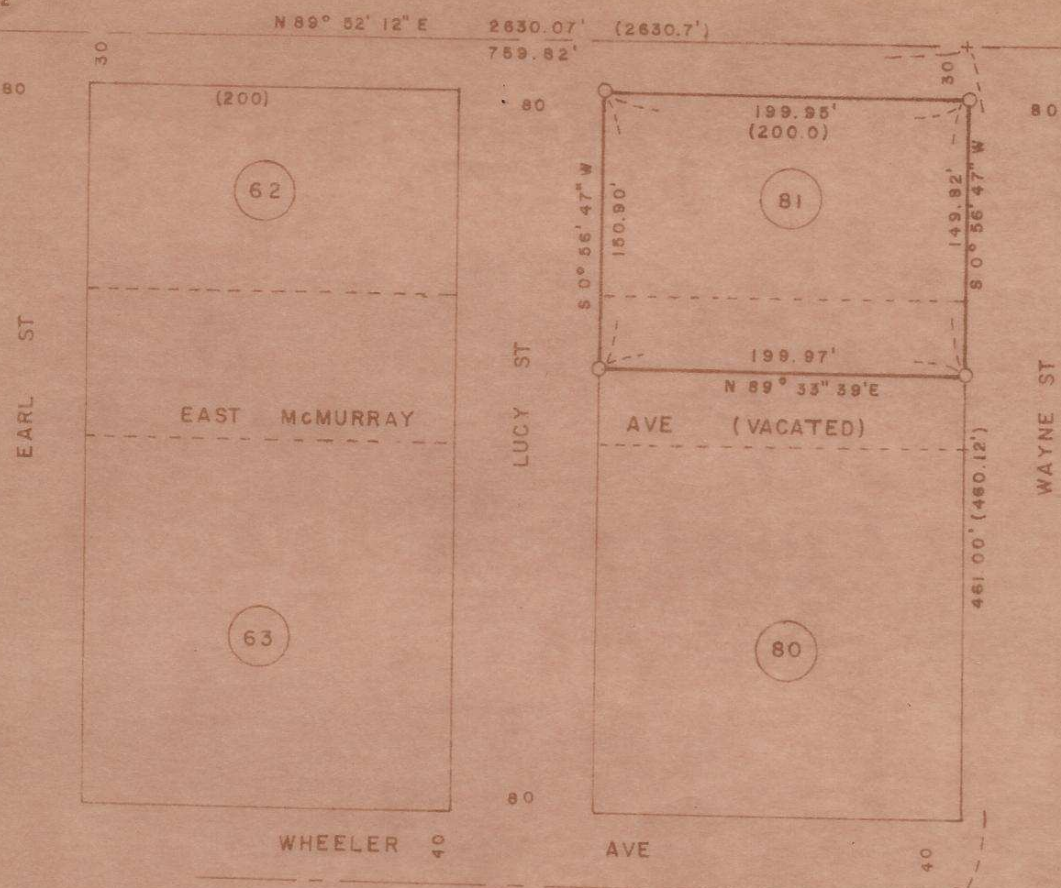


FD B.C.  
CENTER SEC 32

FD BC  
WC E 1/4



FD 1/2 IR  
(INSIDE 1/2" IP)

BEARING BASE Q HARDING AVE  
1976 GASCHLER & ASSOCIATES  
FOR JOHN HUDSON

SHIRLEY DAGGETT & RAY BRADY  
*BRUCE BAKER*

ADDN BK 81 COE'S ADD TO STANDFIELD

32 4 1/4 IR 29 E W.M. U.M.A. L.A. 1971

5-5-77

SCALE 1" = 100'

● MONUMENTS FOUND

200'

○ 1/2" IRON RODS SET

NO. S7704119

REGISTERED  
PROFESSIONAL  
LAND SURVEYOR

*John Hudson*

OREGON  
JULY 24, 1971  
JOHN HUDSON

M-99-Ax