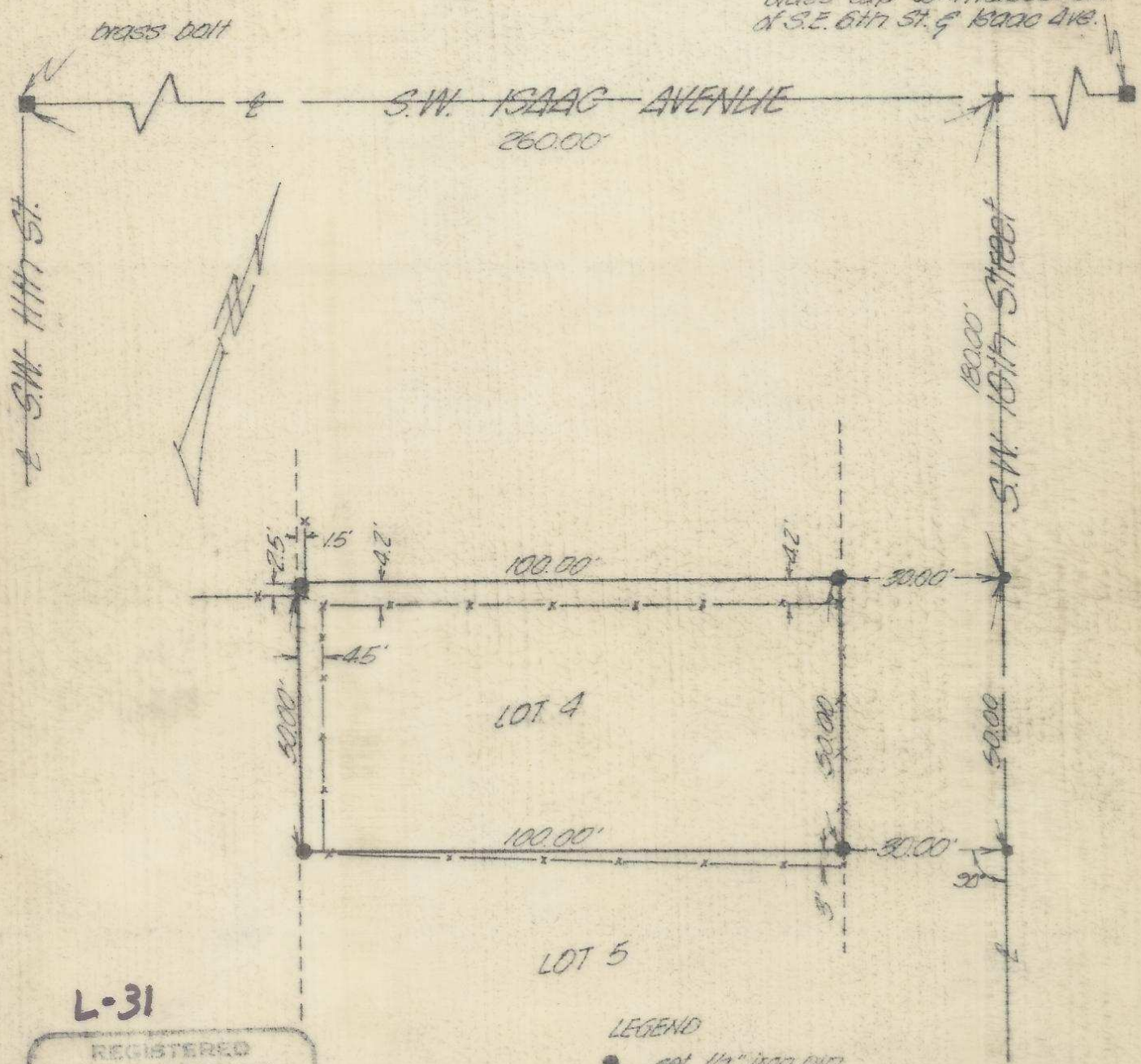


brass cap @ intersection  
of S.E. 6th St. & 16000 Ave.



L-31

REGISTERED  
PROFESSIONAL  
LAND SURVEYOR  
*David H. Krumbain*  
DAVID H. KRUMBAIN

LEGEND  
● set 1/2" iron pin  
● set PK. nail  
\*\*\*\*\* fence

<b>KRUMBAIN ENGINEERING CO.</b> ENGINEERS - SURVEYORS - PLANNERS 216 S.E. 1st, Pendleton, Oregon	SCALE 1"=30'
	DATE Aug 14, 1976
Survey for <b>DOLIG SPROED</b> lot 4, block 276, "Reservation Addn."	DRN. BY T.E.U.
	CKD. BY D.U.K.
	DRNG. NO. 76-584

L-31-A 1