

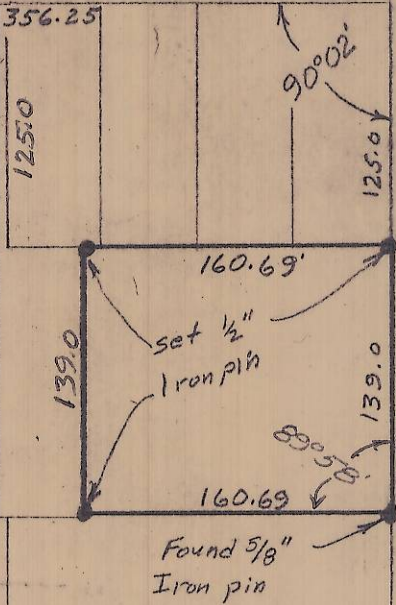
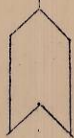
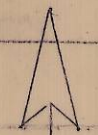
(657.00 by description)

659.83
To Sec. Cor.

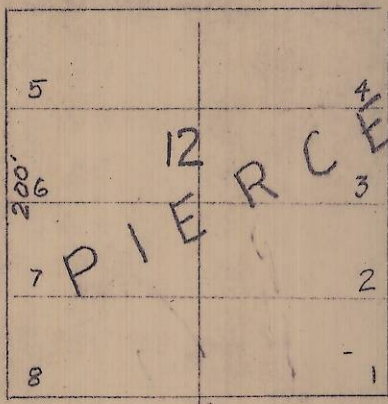
SW 2ND

C. of intersection
Mon. 0
AVE.

PARKVIEW ST.



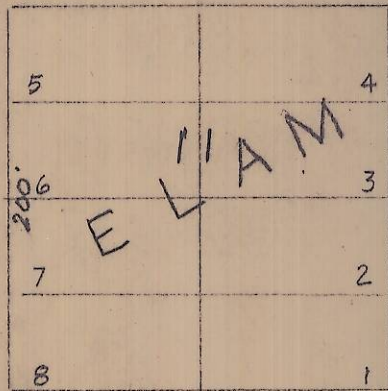
60'



60'

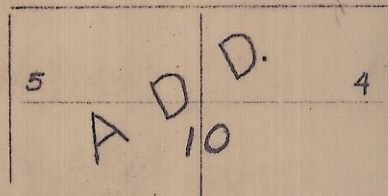
ELIZABETH ST.

SW 3RD AVE.



PIERCE ST.

SW 4TH AVE.



SURVEY FOR
OSCAR KNIGHT
MILTON-FREEWATER, ORE.
Scale 1" = 100' NOV. 30, 1973



I-97