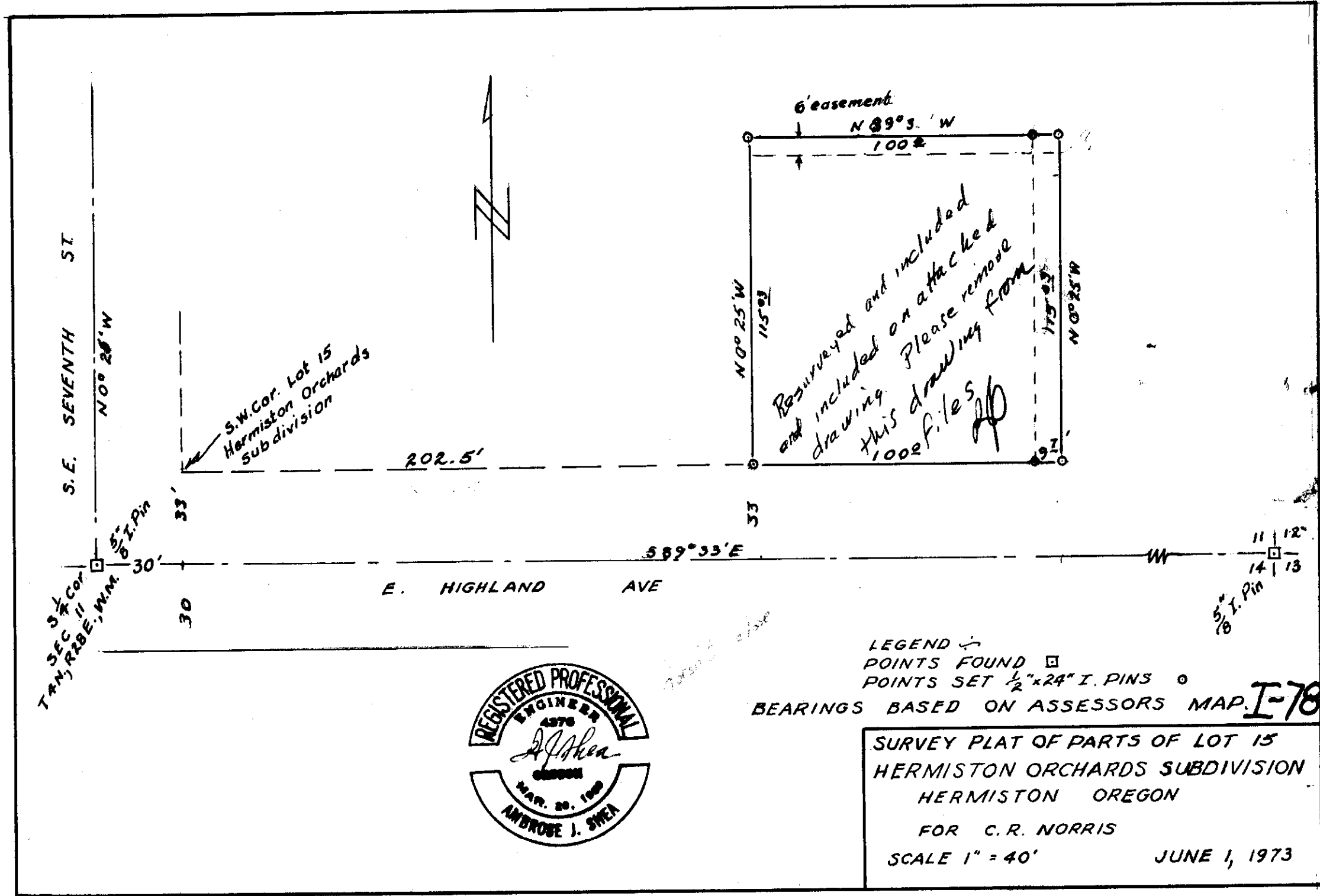


I-78-A



S.W. Cor. SEC. 11, R. 2E, N. 1/2

S.E. SEVENTH ST  
N 0° 25' W

S.W. Cor. Lot 15  
Hermiston Orchards  
subdivision

202.5'

N 0° 25' W  
115.93'

Resurveyed and included  
and included on attached  
drawing. Please remove  
this drawing from  
1002 files

6' easement  
N 89° 33' W  
100.2'

N 0° 25' W  
115.93'

E. HIGHLAND AVE

S 89° 33' E

11 | 12"  
14 | 13  
S.W. Cor. 1/2



LEGEND  
 POINTS FOUND □  
 POINTS SET 1/2" x 24" I. PINS ○  
 BEARINGS BASED ON ASSESSORS MAP. I-78

SURVEY PLAT OF PARTS OF LOT 15  
 HERMISTON ORCHARDS SUBDIVISION  
 HERMISTON OREGON  
 FOR C. R. NORRIS  
 SCALE 1" = 40' JUNE 1, 1973