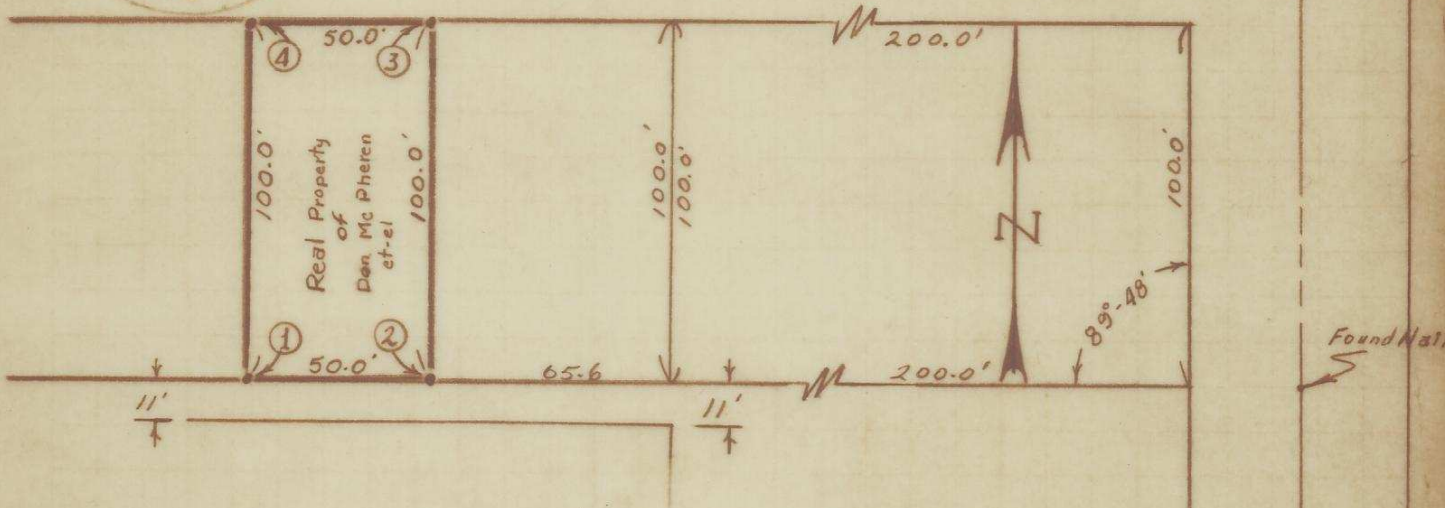



Tax Lot No. 2700-Sht. 5N-35-02DD




CATHERINE AVENUE



LEGAL SURVEY

Beginning at Section Cor.  Twp. 5N. R. 35 E.W.M.
 Thence; North 604.47' along common sect. line 1 & 2
 (also the centerline of DeHaven Street.) to a nail
 marking the center line of DeHaven Street thence; West
 345.6' to Corner No. 1 and pt. of beginning thence; East
 50.0' on tangent 50.0' to corner No. 2 (parallel to Catherine
 Ave) thence; North 100.0' (parallel to DeHaven St.)
 to corner No. 3 thence; West 50.0' (parallel to Catherine
 Ave.) to corner No. 4 thence South 100.0' (parallel
 to DeHaven St.) to corner No. 1 and the point of
 beginning of this property survey description, situated
 in the SE 1/4, SE 1/4, Sect. 2 Twp. 5N. R. 35 E.W.M.
 City of Milton-Freewater, Umatilla County
 State of Oregon.

Legend : • Set steel rod 1/2" dia. x 30" long.

 Found Sect. Corner.
(Reset By R. Thompson L.S.)

F-2-AY

