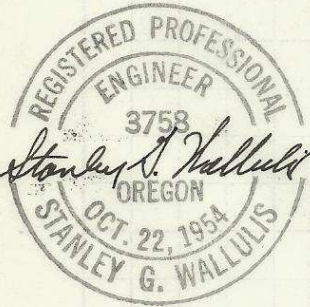
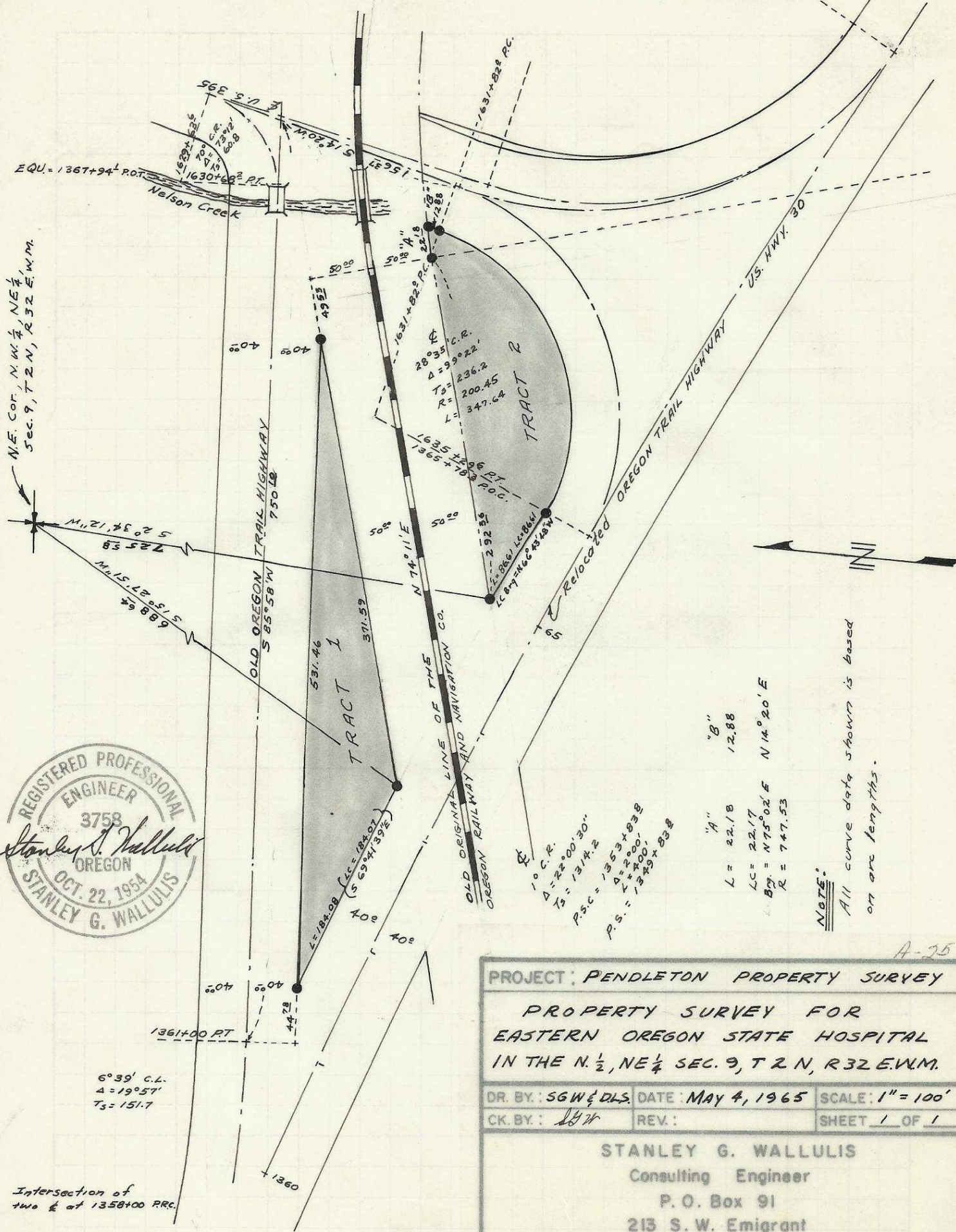


N.E. Cor. N.W. 1/4, NE 1/4,  
Sec. 9, T. 2 N., R. 32 E. W.M.



6°39' C.L.  
Δ = 19°57'  
Ts = 151.7

Intersection of  
two 6" at 1358+00 P.C.

10 C.R.  
Δ = 22°00'30"  
Ts = 1314.2  
P.S.C. = 13553+938  
L = 2000.  
L = 2000.  
L = 2000.  
L = 2000.

"A"  
L = 22.18  
LC = 22.17  
By = N75°02' E N14°20' E  
R = 747.53

NOTE:  
All curve data shown is based  
on arc lengths.

A-25

PROJECT: PENDLETON PROPERTY SURVEY		
PROPERTY SURVEY FOR EASTERN OREGON STATE HOSPITAL IN THE N. 1/2, NE 1/4 SEC. 9, T. 2 N., R. 32 E. W.M.		
DR. BY: SGW & DLS	DATE: MAY 4, 1965	SCALE: 1" = 100'
CK. BY: <i>SGW</i>	REV:	SHEET 1 OF 1
STANLEY G. WALLULIS Consulting Engineer P. O. Box 91 213 S. W. Emigrant		
Pendleton		Oregon