

S. W. Isaac Ave.

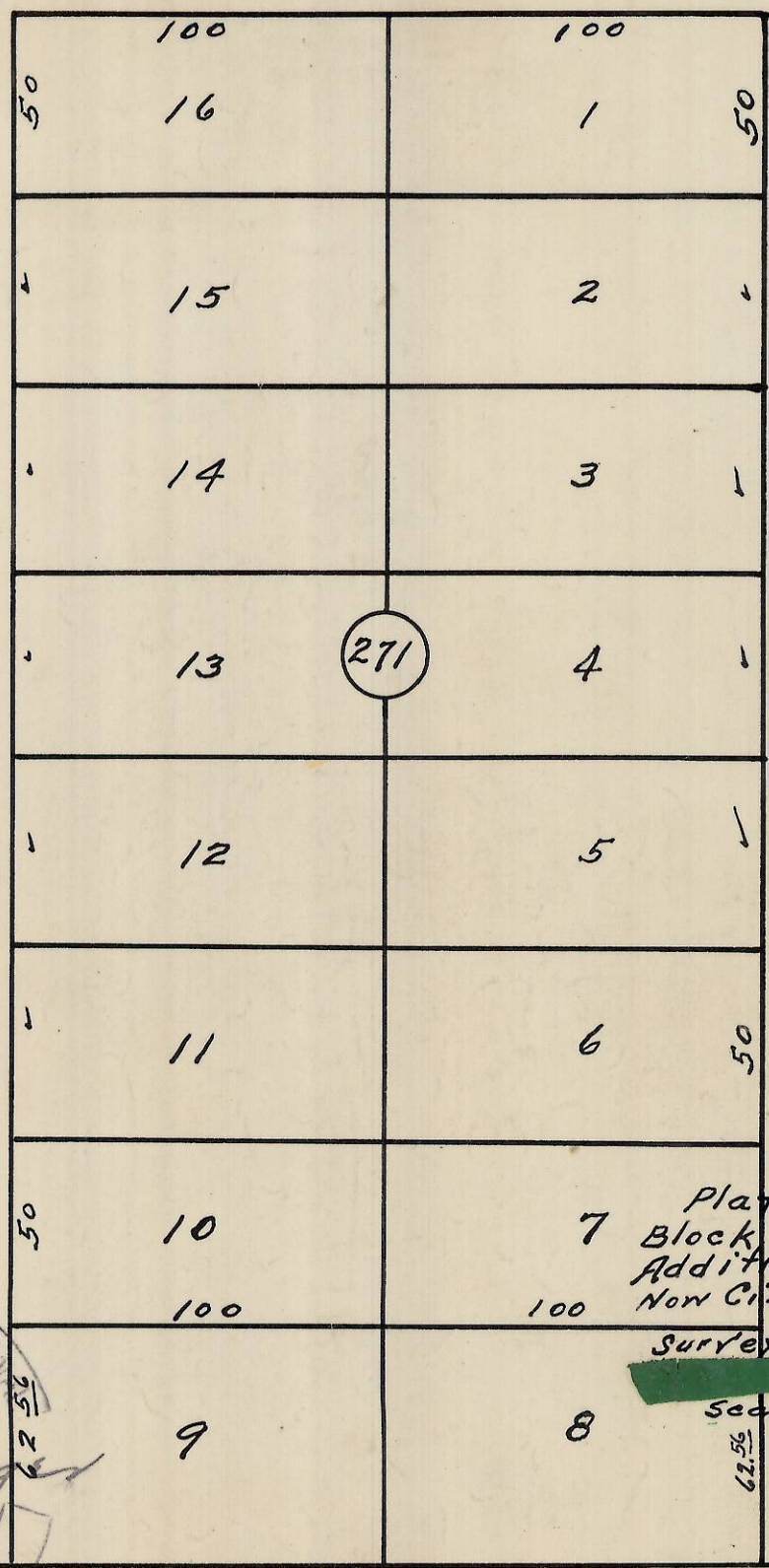
60  
60

60

60

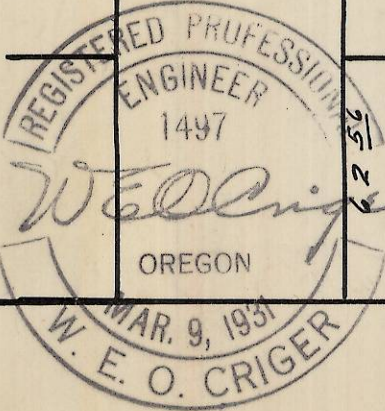
S. W. 6<sup>th</sup> St.

S. W. 5<sup>th</sup> St.



271

Plat showing  
 7 Block 271 of Reservation  
 Addition to the town,  
 Now City of Pendleton, Ore.  
 surveyed, staked & platted  
 - By ~~W. E. O. Criger~~  
 scale: 1 inch = 50 ft.



South Boundary Res. Add.

Rec'd. 2/21/13  
J. Roberts

2N 32 10 DA 13-114-Ax