

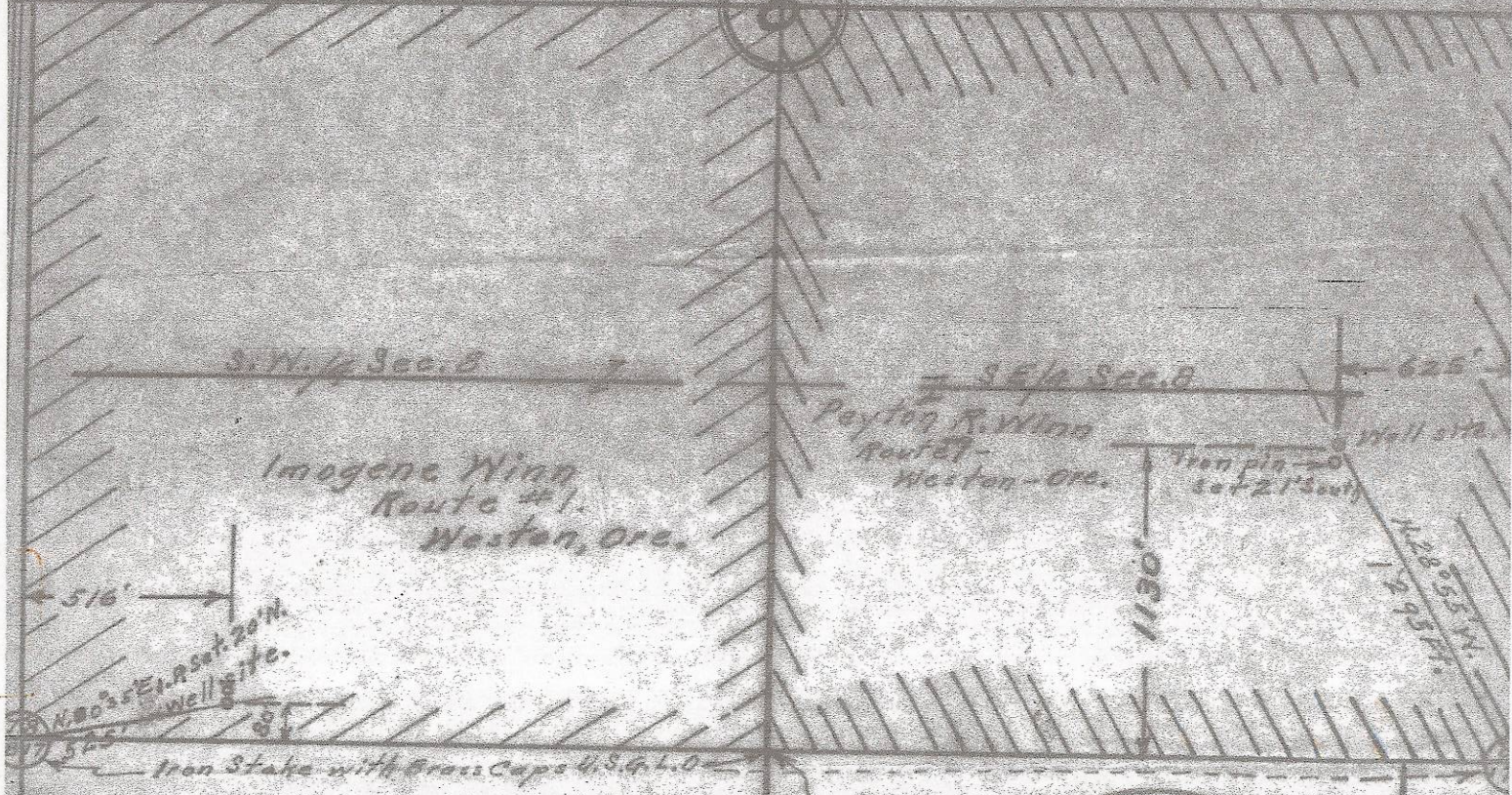
RECEIVED BY

Umatilla County Surveyor

Date: 2/8/2013

Rec'd By: S. Rex

No.: 13-056-AX T30207



I, W.E.O. Criger of Pendleton, Oregon do hereby certify that this map was made from notes taken during an actual survey made by me on Dec. 22-1953. That the monuments shown on this map consisting of 3/4" pipes driven level with the top of the ground and indicated with wood stake and flag markers, is located N. 80° 35' E. from S.W. Cor. of Sec. 8. and 525 Feet therefrom. And N. 28° 55' W. 1295 Feet from S.E. Corner of Sec. 8.



Map showing  
 Lands surveyed in  
 1/2 Sec. 8 - T. 3N., R. 27-E., W.M.  
 Morrow County, Oregon.  
 surveyed, staked & platted Dec. 1953  
 By W.E.O. Criger. Scale: 8" = 1 mile.

Poyton R. Winn -  
 Morrow County, Ranch.