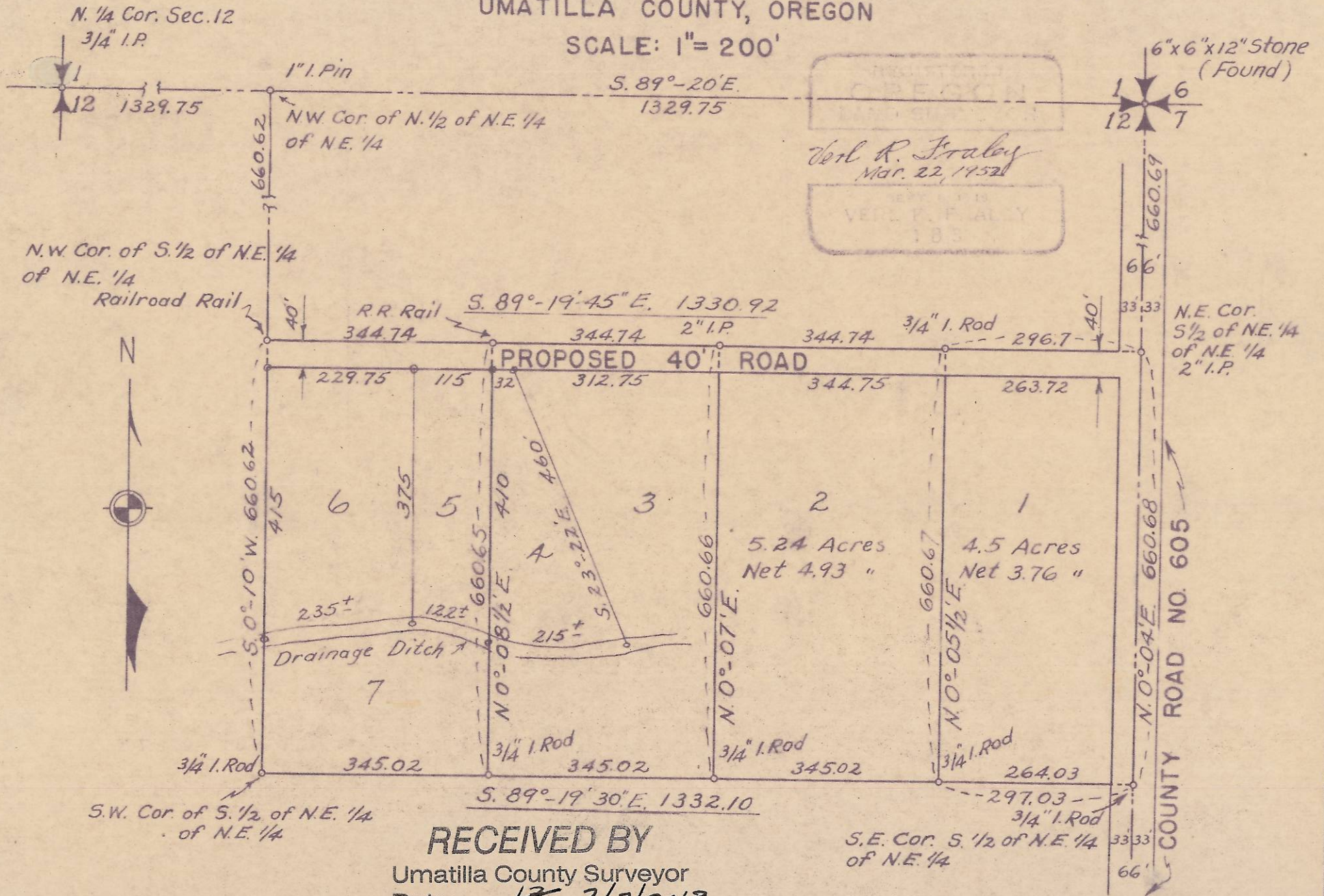


TRACTS OF LAND
 LOCATION: S. 1/2 OF N.E. 1/4 OF N.E. 1/4 SEC. 12, T. 4 N., R. 28 E., W.M.
 UMATILLA COUNTY, OREGON

SCALE: 1" = 200'



RECEIVED BY

Umatilla County Surveyor

Date: 13 2/7/2013

Rec'd By: S. Oles

No.: 13-036-AX