

Map showing
Tract of land located in the
N.W/4 of Sec. 15-T.4N., R.35E. W.M.
and lying north of Weston, Oregon.

Owned by Frances Schrimpf

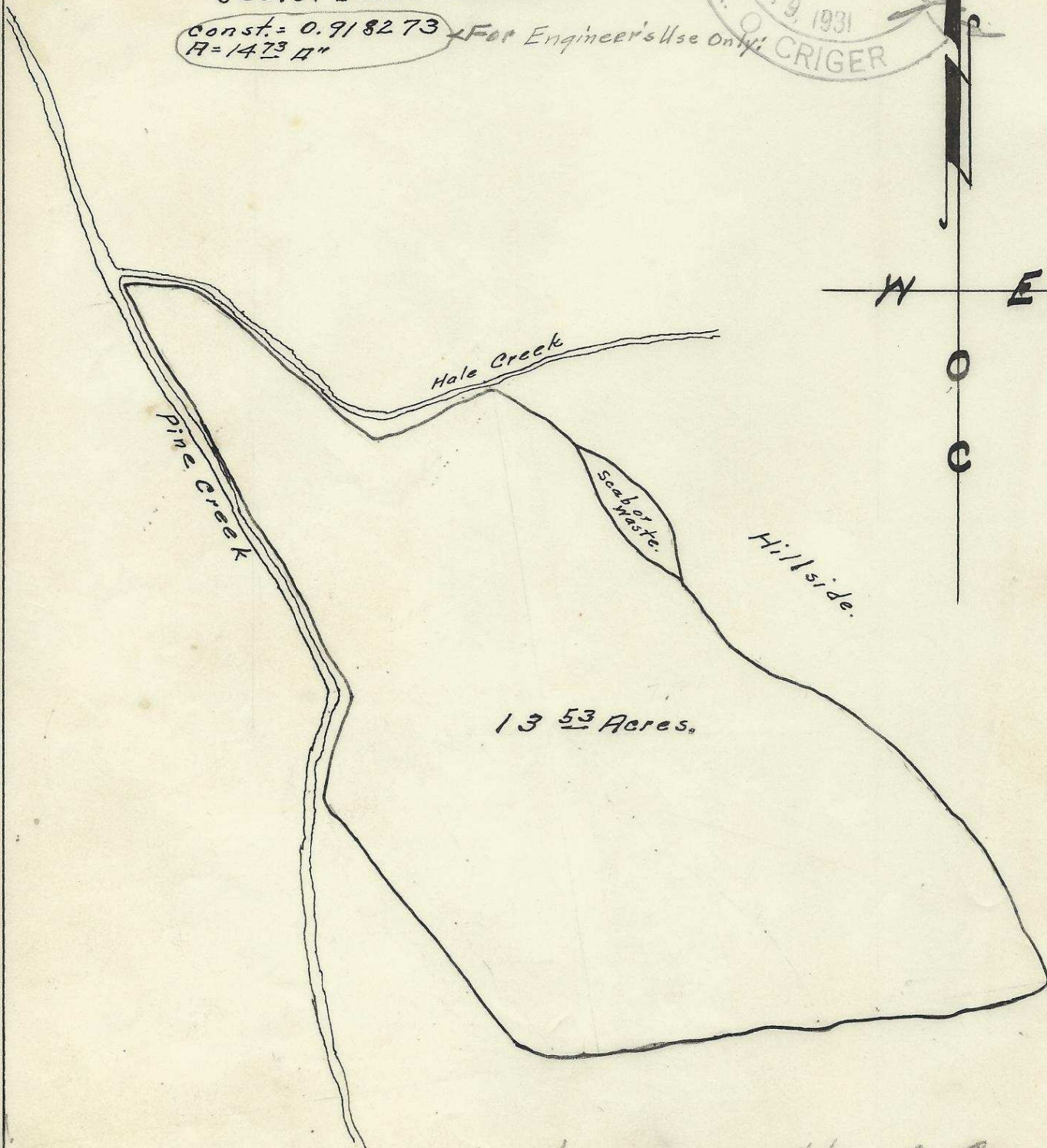
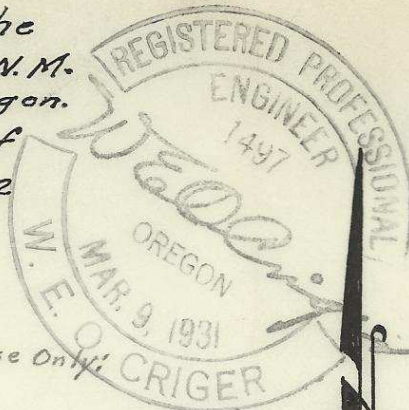
Surveyed & platted April 1952

By- W.E.O. Criger-

Scale: 1 inch = 200 Feet.

Const. = 0.918273
R = 1473 ft

For Engineer's Use Only



Weston - North of Cannery,

09-160-Ax