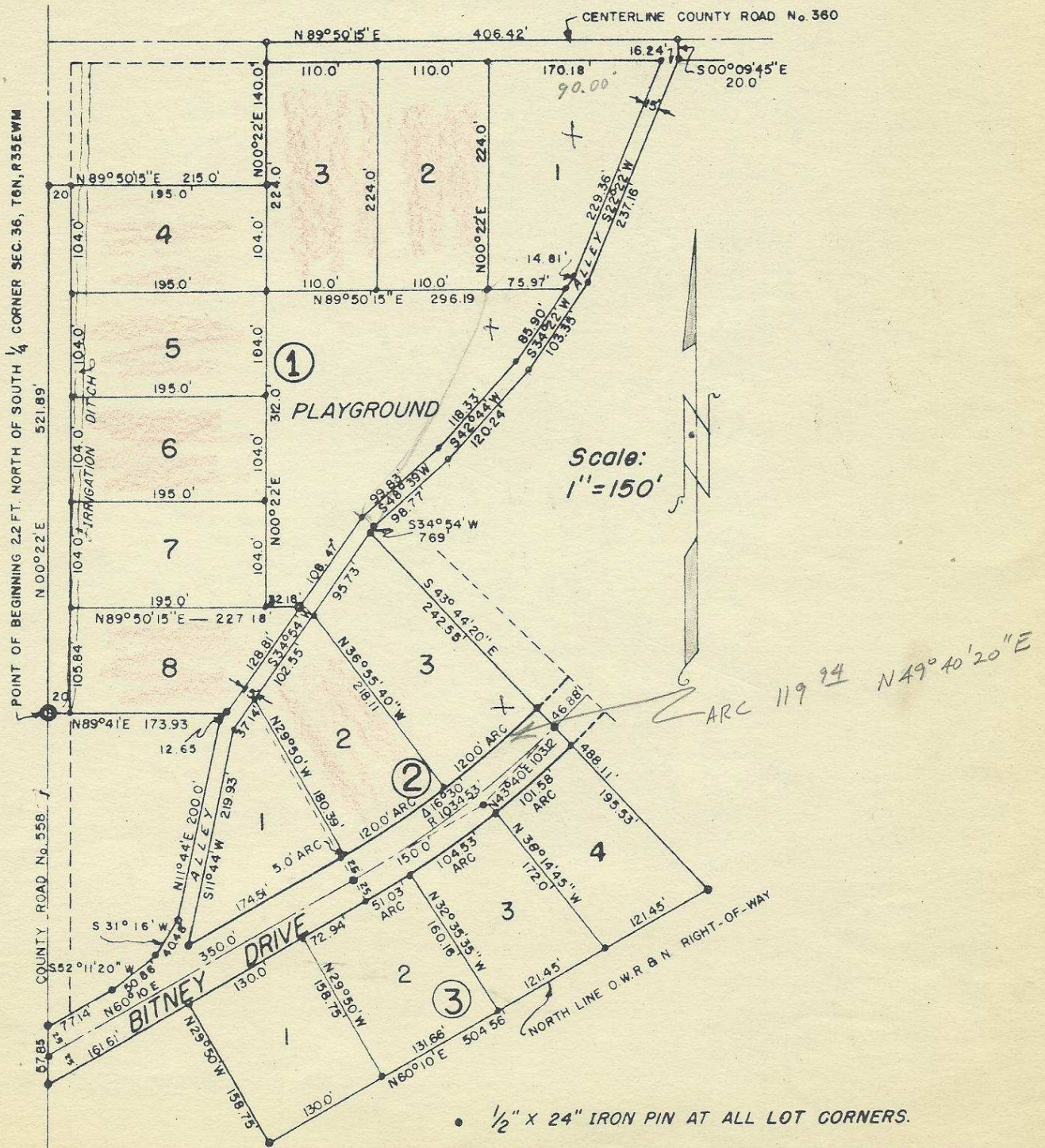


# SCENIC VIEW ADDITION

TO UMATILLA COUNTY, OREGON

LOCATION: PORTION OF SW 1/4 - SE 1/4 SEC. 36, T. 6 N., R. 35 E. W.M.  
AND NW 1/4 - NE 1/4 SEC. 1, T. 5 N., R. 35 E. W.M.

SURVEYOR: G. M. NEWBILL, WALLA WALLA, WASHINGTON



- 1/2" X 24" IRON PIN AT ALL LOT CORNERS.
- 5/8" X 30" IRON PIN AT ALL BLOCK CORNERS AND ANGLE POINTS

06-547-Ax