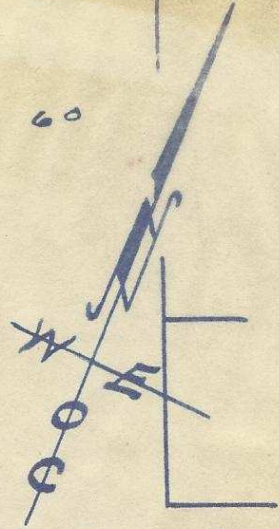
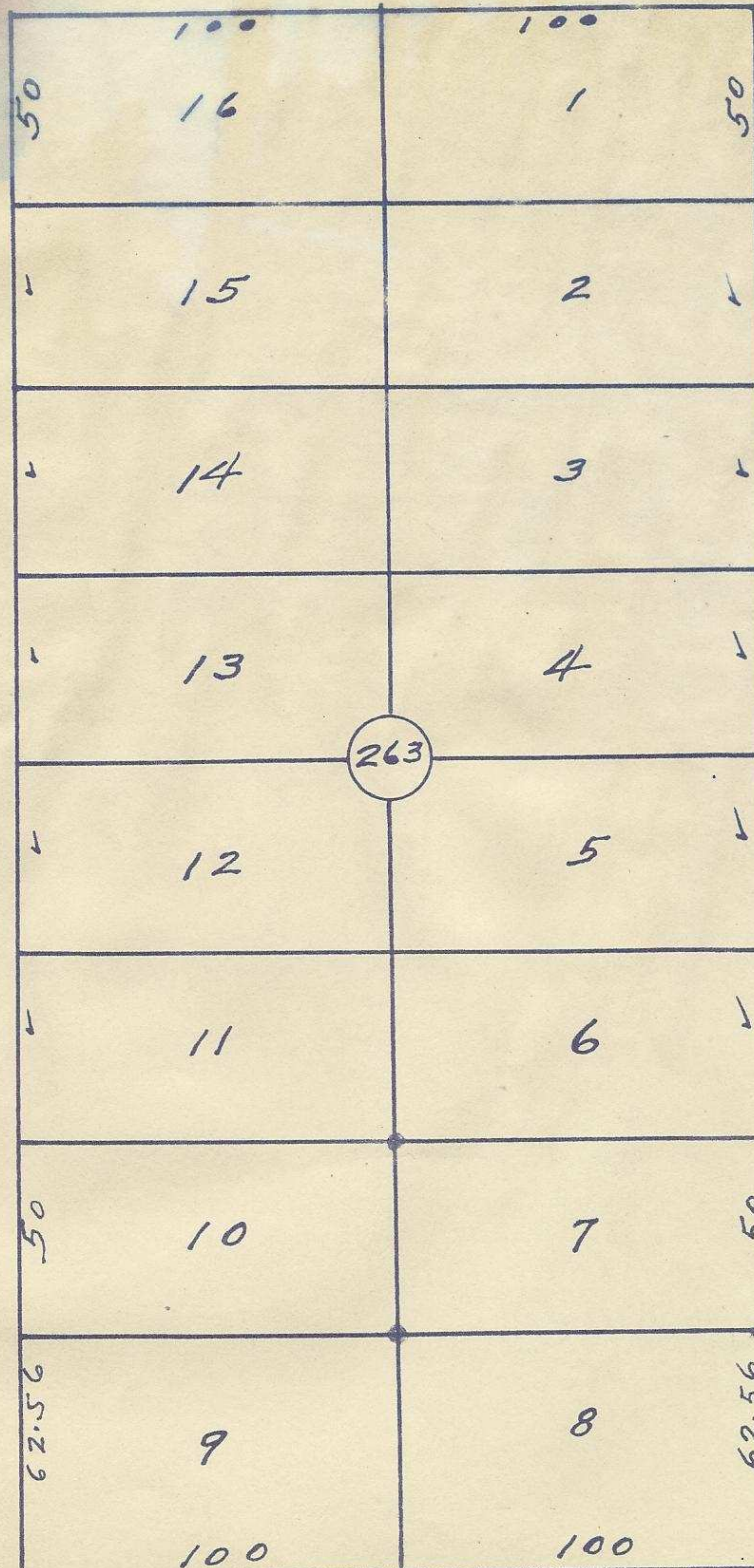


S.E. ISAAC AVE. 60

60

60

60



Map of
 Block 263 of
 Reservation Addition
 to the town, now City
 of Pendleton, Oregon.
 Surveyed, staked and
 platted, Sept. 1950
 By W. E. O. Criger.
 Scale: 1" = 50'

S.E. 2nd St.

S.E. 3rd St.

60

100

100

60

Reservation Addition Boundary.

2N32 11CA

06-359-Ax