

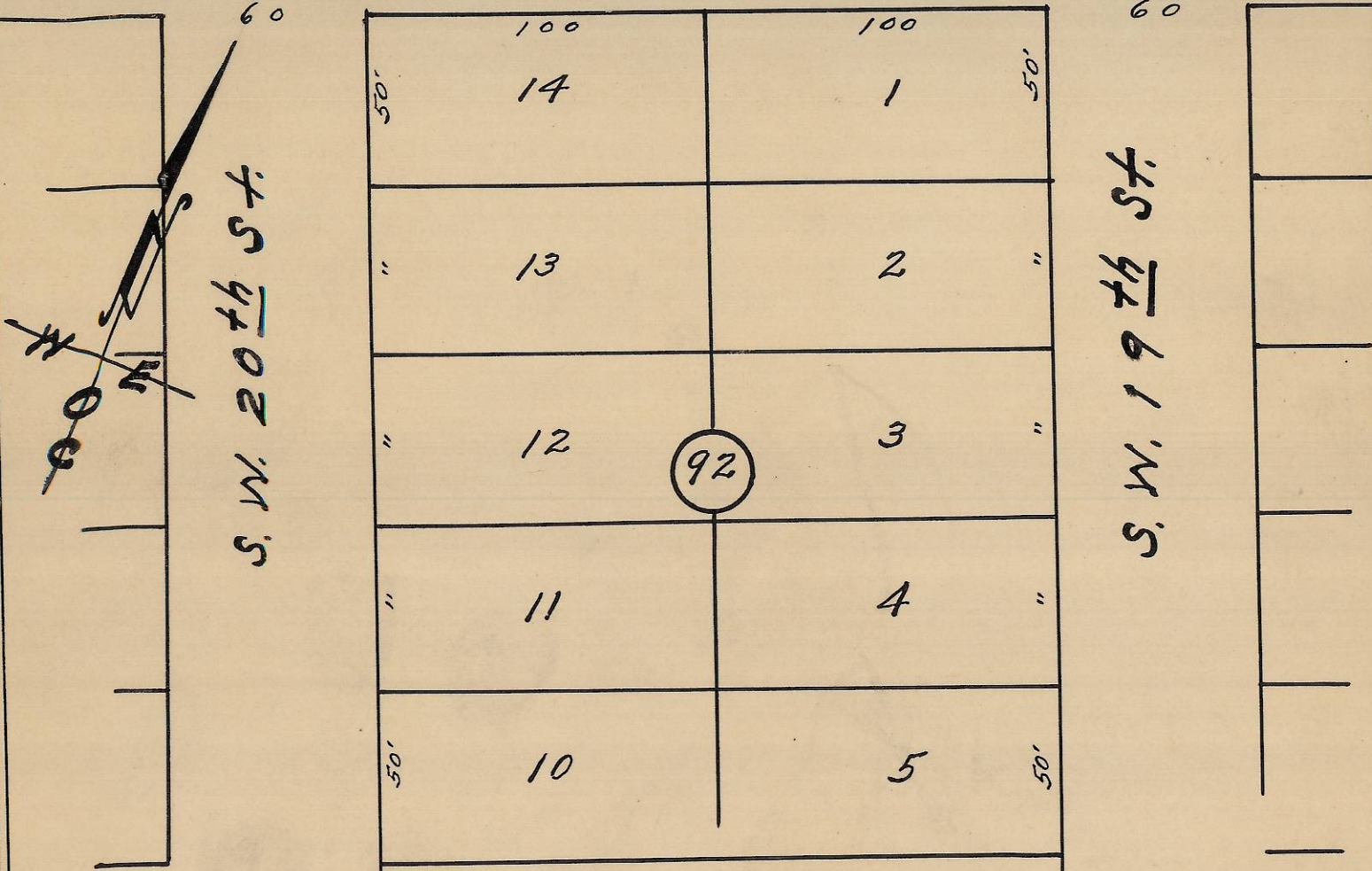
S. W. Emigrant Ave.

60

60

60

60



Plat showing  
N. Portion of Block 92 of  
Reservation Addition to the town,  
now City of Pendleton, Oregon.  
Scale: 1 inch = 50 Feet.  
Surveyed, staked, & plotted  
By W. E. O. Criger.

06-352 - AX

Bill Frank-

(4)