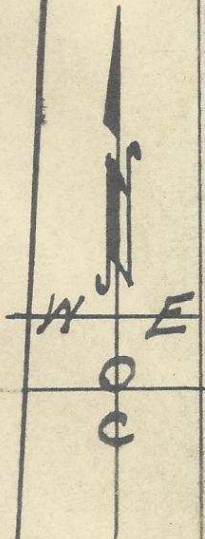
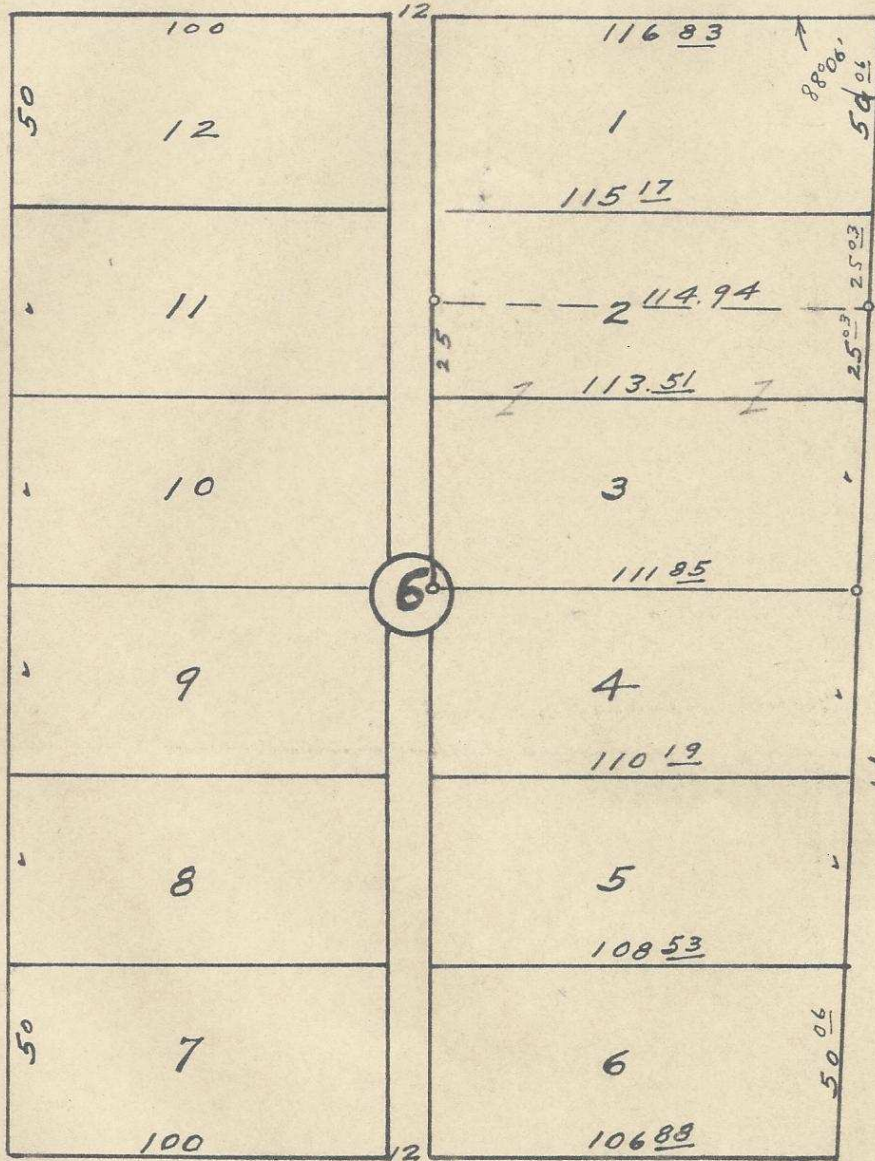


60

60

N.W. Furnish Ave.

N.W. 11th St.



N.W. 10th St.

60

N.W. Ellis Ave.

60

60

60  
Wellington

2 NSZ03CD

Plat of  
 Block 6 of Cole's Addition  
 to the town, now City of  
 Pendleton, Oregon.  
 surveyed, staked & platted,  
 Jan-1951 - By - W.E.O. Criger.  
 Scale: 1"=50'

06-349-Ax

s/2 - Lt. 2 + Lt. 3 - Ben McBurnett.