

11	152	4
10		5
9		6
8		7

12	3	
11	154	4
10		5
9		6
8		7

9	3942
36	8

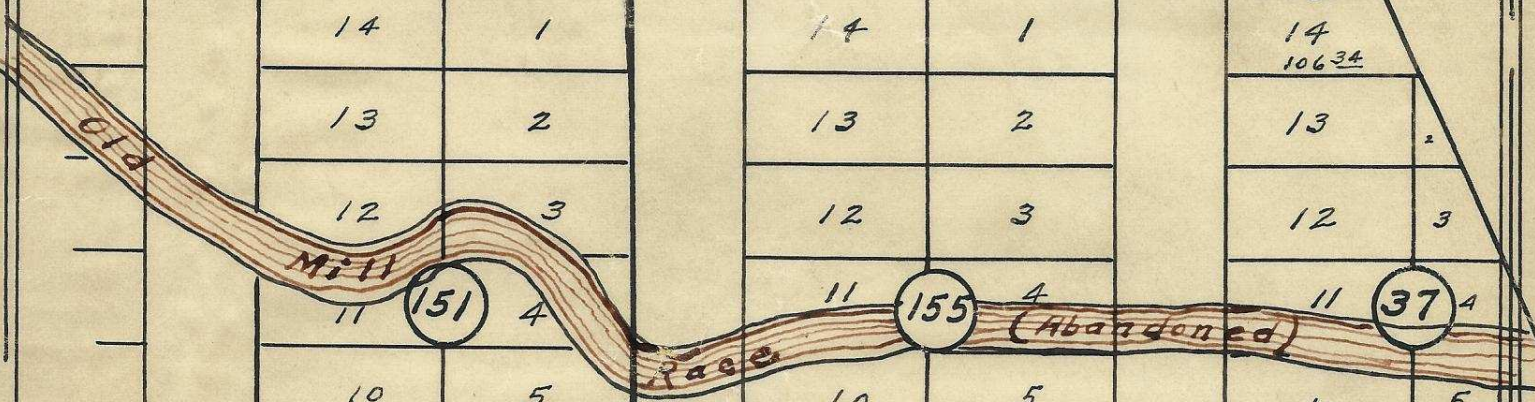
S.E. Byers

Place

14	1	
13	2	
12	3	
11	151	4
10		5
9		6

14	1	
13	2	
12	3	
11	155	4
10		5
9		6

14	10634	
13	2	
12	3	
11	37	4
10		5
9		6



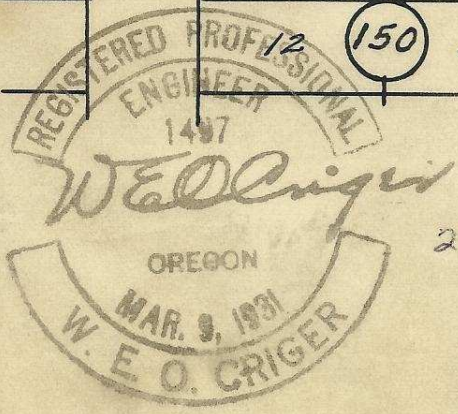
O.R. & N. Co's Right of way

S.E. Court Place

13	2	
12	150	3

13	2	
12	156	3

13	2	
12	157	3



2032 ICC
2DD
HAA
+2BB

Plat showing
Blocks 151, 152, 154, 155, 36 & 37 of
Reservation Addition to the town,
now City of Pendleton, Oregon.
Surreyed, staked & platted, Jan. 1949
By W.E.O. Criger.
Scale: 1 inch = 100 Feet.

06-346-Ax

Walter Lofton. (4)