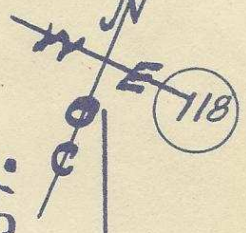
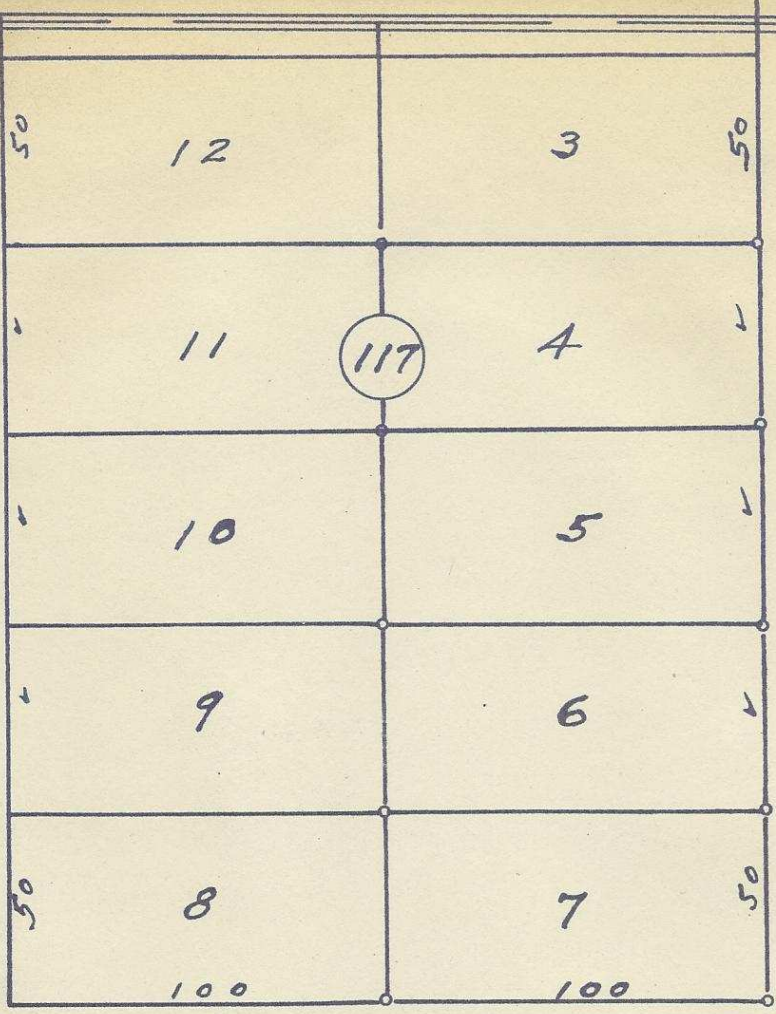


S. E. 7th ST.

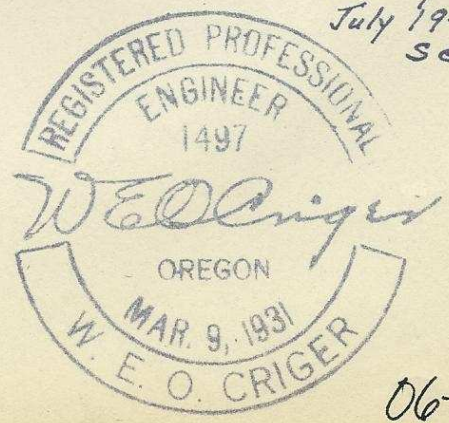
S. E. 8th ST.

S. E. GOODWIN AVE.



2N32 11BA

Plat of
 Block 117 of
 Reservation Addition
 to the town, now City
 of Pendleton, Oregon.
 Surveyed, staked + platted
 July 1950 - By W.E.O. Criger
 Scale: 1" = 50 Ft.



06-339-Ax

116

118

4