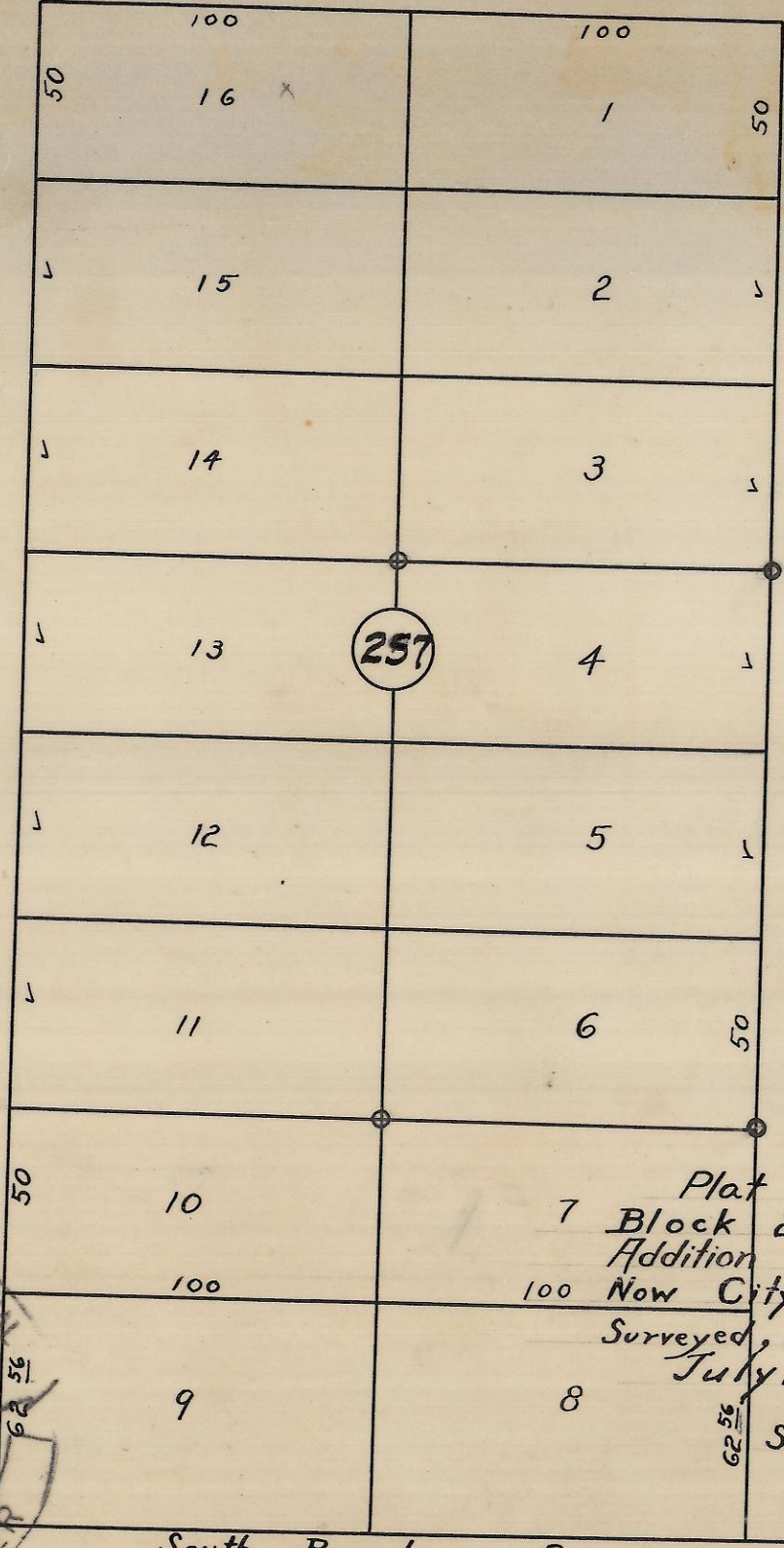


S.E. Isaac Ave.

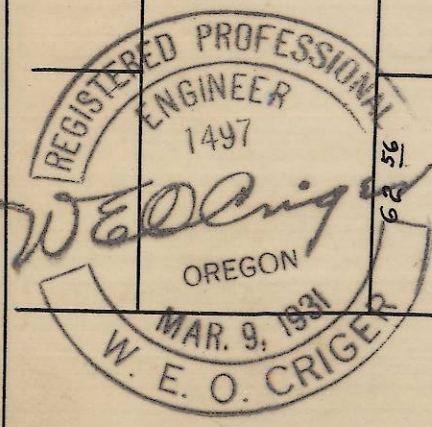
60 60 60

S.E. 8th St

S.E. 9th St



Plat showing
 7 Block 257 of Reservation
 Addition to the town
 100 Now City of Pendleton, Ore
 Surveyed, staked & platted
 July 1949 By W.E. Criger.
 Scale: 1" = 50 ft.



South Boundary Res. Add.

06-337-A4

A. E. Lewis - 1105 - Alexander -

Lot 7, B, 257 W.M. Place