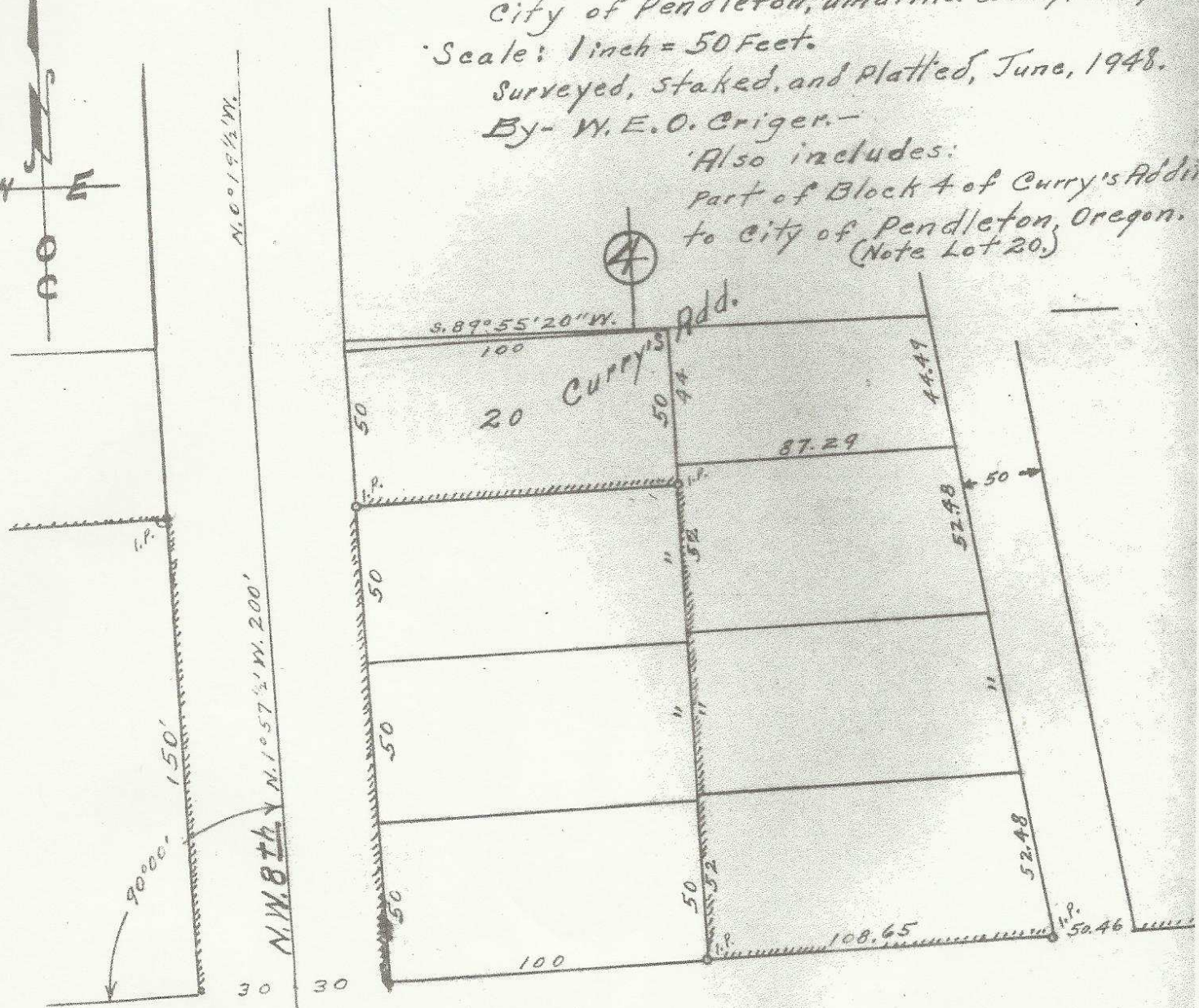
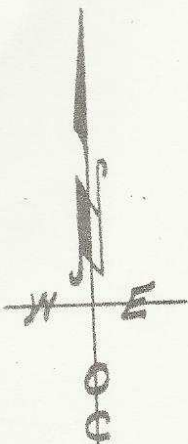


Plat Showing  
 a descriptive tract in an unplatted  
 area - on N.W. 8<sup>th</sup> St. and North of Gilliam  
 City of Pendleton, Umatilla County, Oregon.

Scale: 1 inch = 50 Feet.

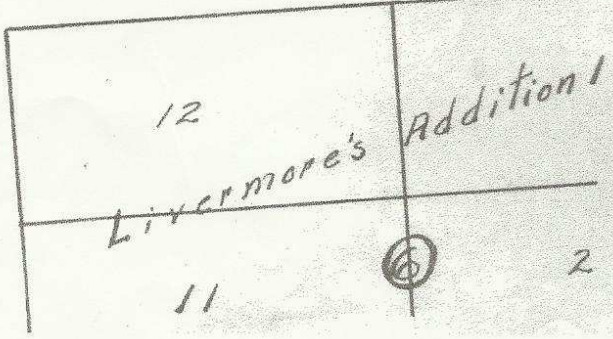
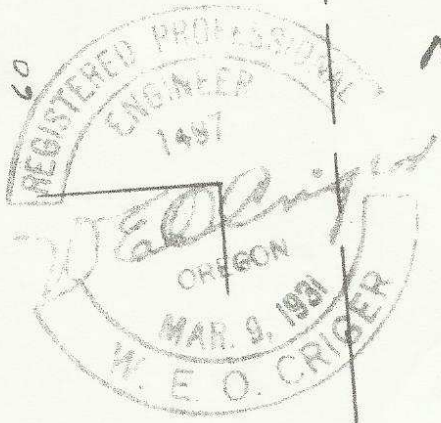
Surveyed, staked, and Platted, June, 1948.  
 By - W. E. O. Criger.

Also includes:  
 Part of Block 4 of Curry's Addition  
 to City of Pendleton, Oregon.  
 (Note Lot 20)



N.W. GILLIAM AVE. 60

2032 3 DB



06-329-AX