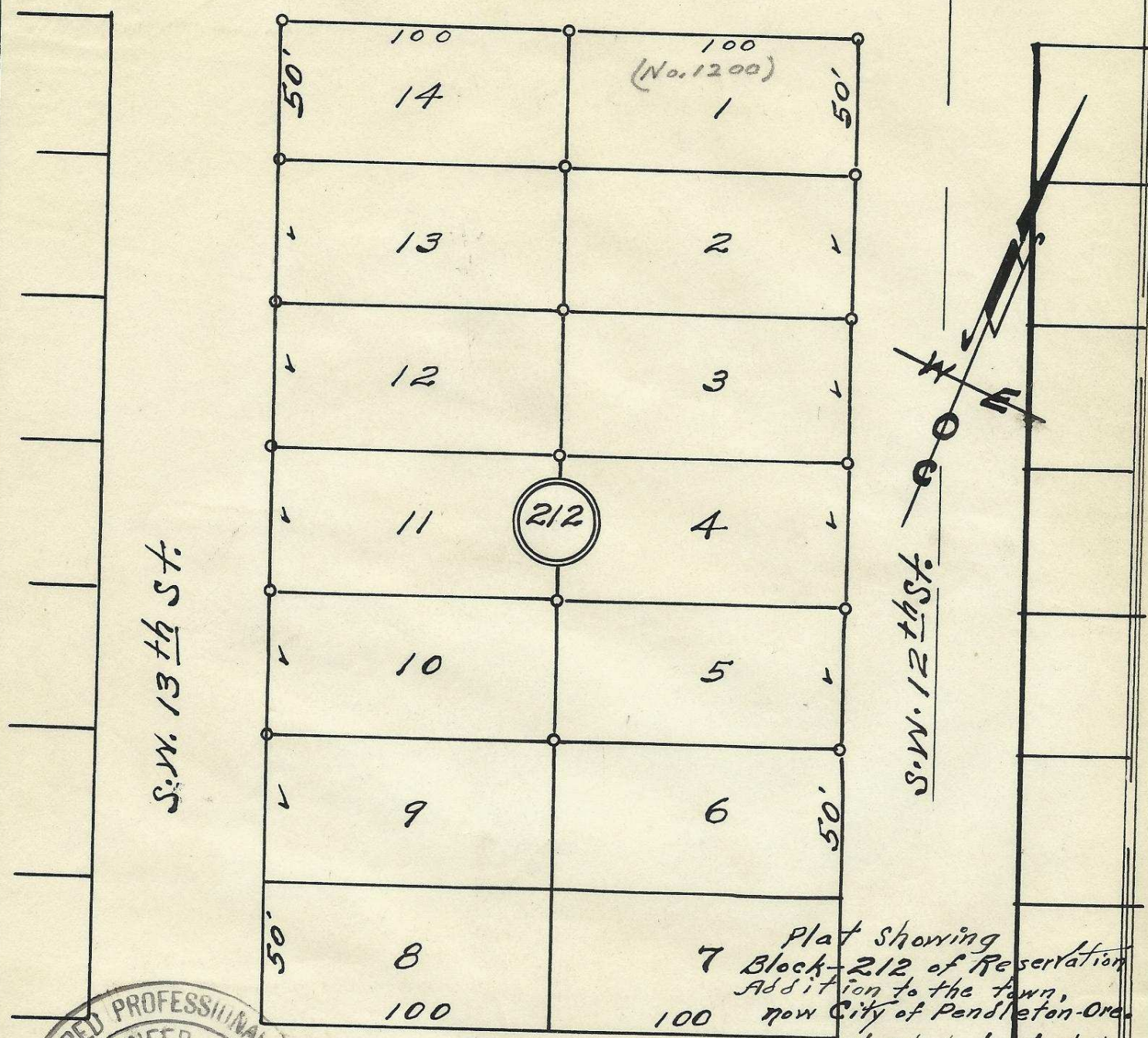


60' S.W. Hailey Ave. 60'



Plat showing
 7 Block-212 of Reservation
 Addition to the town,
 now City of Pendleton-Ore.
 surveyed, staked and platted
 March-1955 - By W.E.O. CRIGER.
 Scale: 1 inch = 50 Feet.



S.W. Isaacs Ave. 60'

2N32 10 DE 60'
 06-293-Ax

Ruth Dunn - Country Club -

4