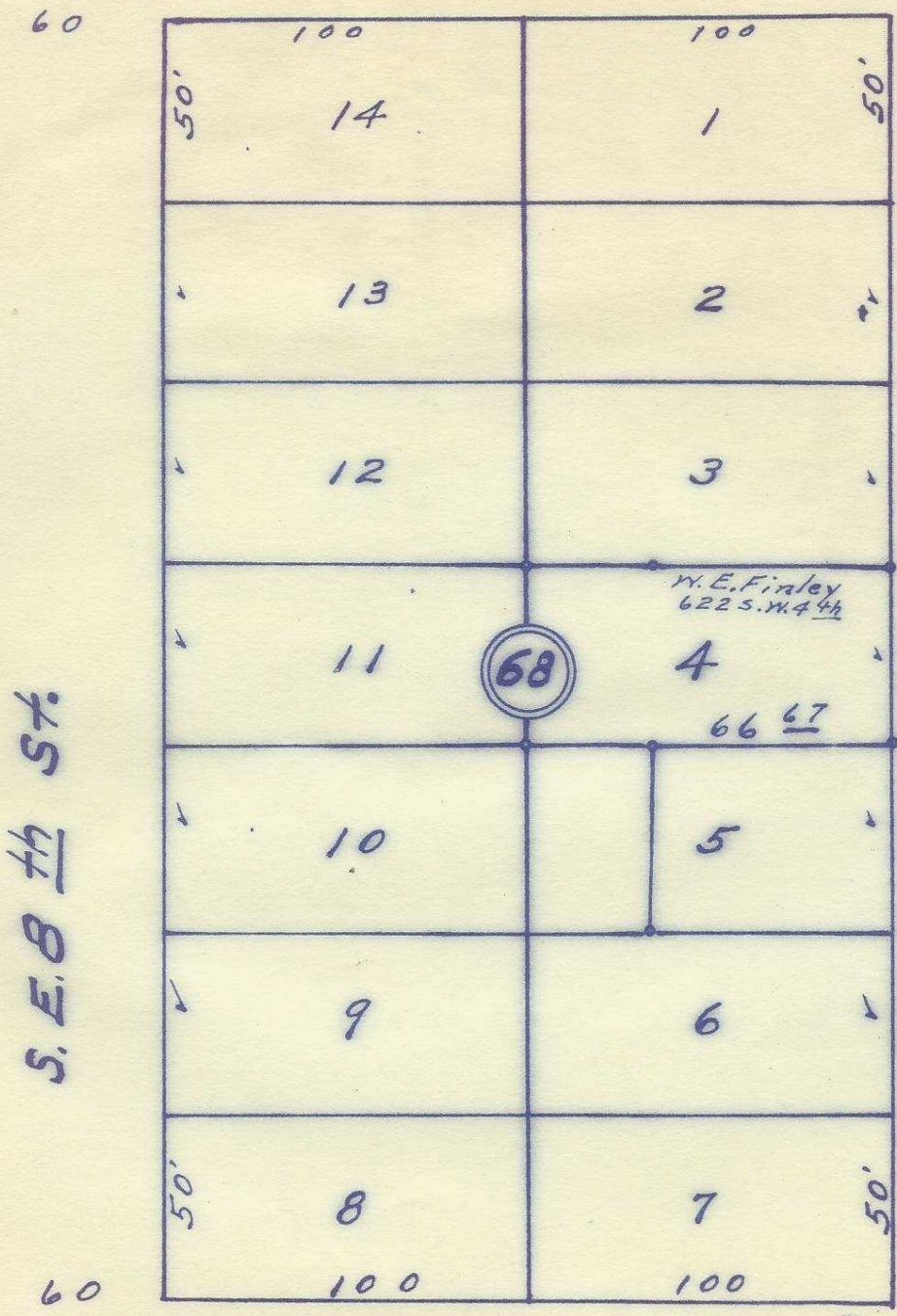
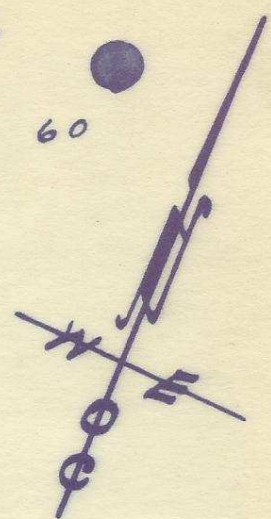


S.E. Emigrant Ave.



Plat of  
 Block 68 of  
 Reservation Addition  
 to the town, now city  
 of Pendleton, Oregon.  
 Surveyed, staked & platted  
 Jan-1954 - By W.E. Criger  
 Scale: 1" = 50'

S.E. Frazier Ave.

2N 32 11 BA

06-287-AX

