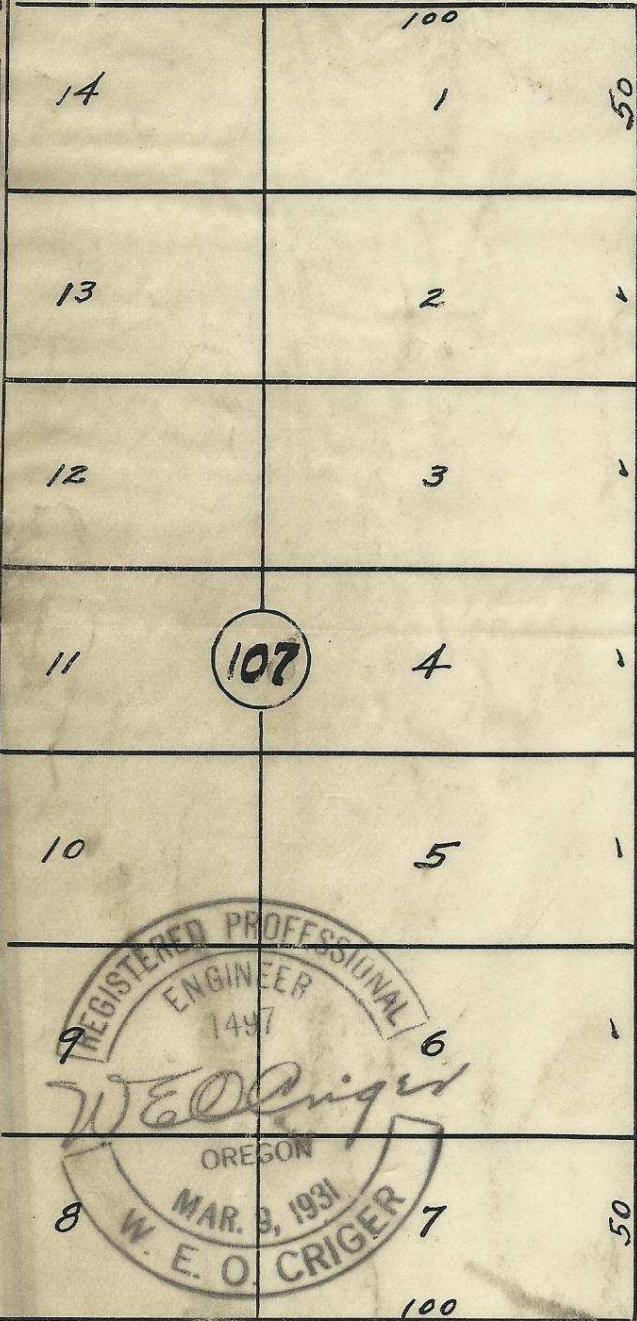
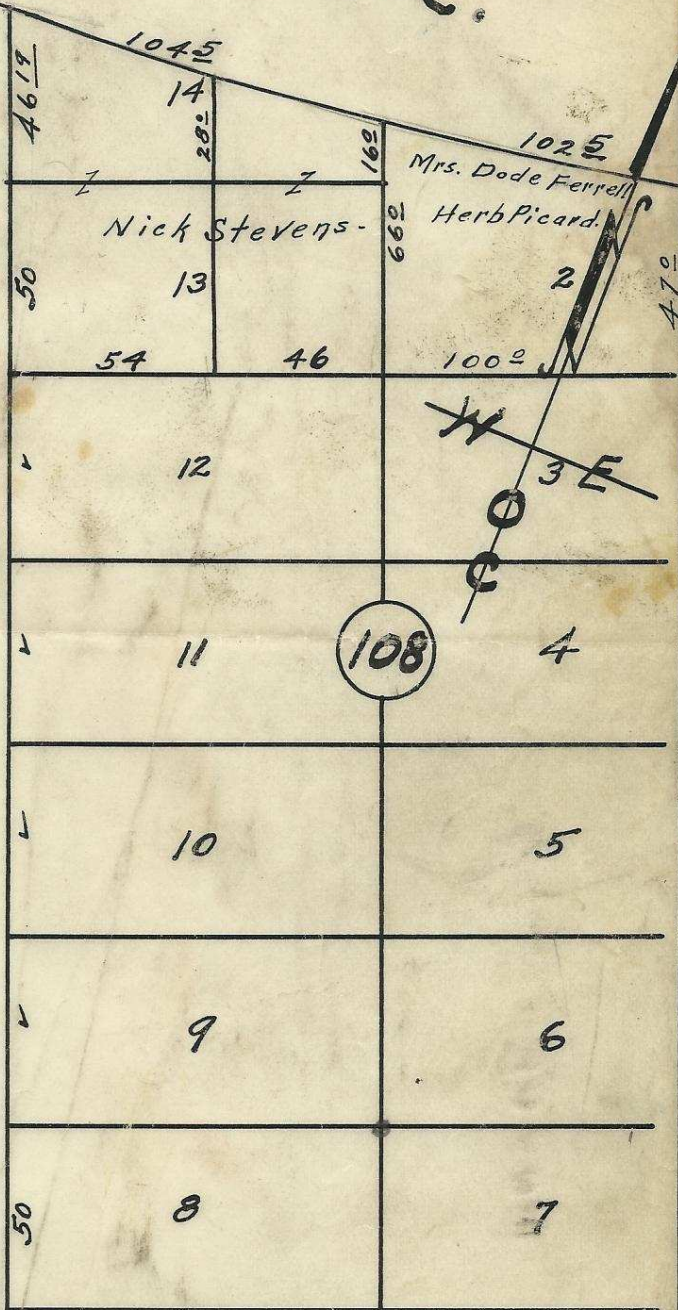


S.W. FRAZIER

O.W.R. & N. AVE.
R.R.



S.W. 9th ST.



plat showing
 Part of
AVE. Blocks-107 & 108
 of Reservation Addition
 to the City of Pendleton, Ore.
 Surveyed, Staked and platted -
 Sept. 1949 -
 By W.E.O. Criger.

S.W. GOODWIN

2N32 100B

06-228-Ax

Scale: 1 inch = 50 Ft.

