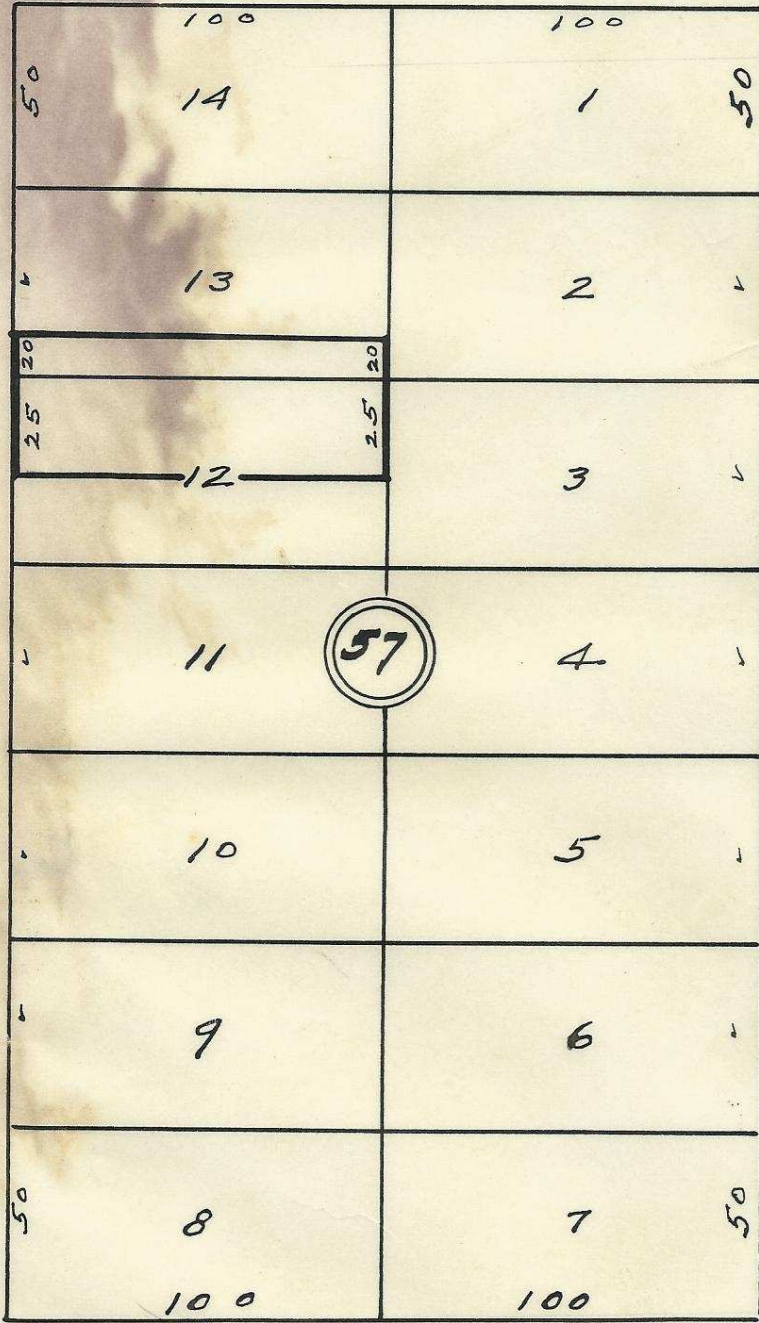


S.W. Dorion Ave

S.W. 3rd St.

S.W. 2nd St.



S.W. Emmigrant Ave.

2032 10AD

06-259-Ax

Plat showing  
 Block 57 of  
 Reservation Add'n  
 to City of Pendleton  
 Oregon -  
 surveyed, stated & platted  
 August-1952 -  
 By W. E. O. Criger -  
 Scale: 1" = 50'

