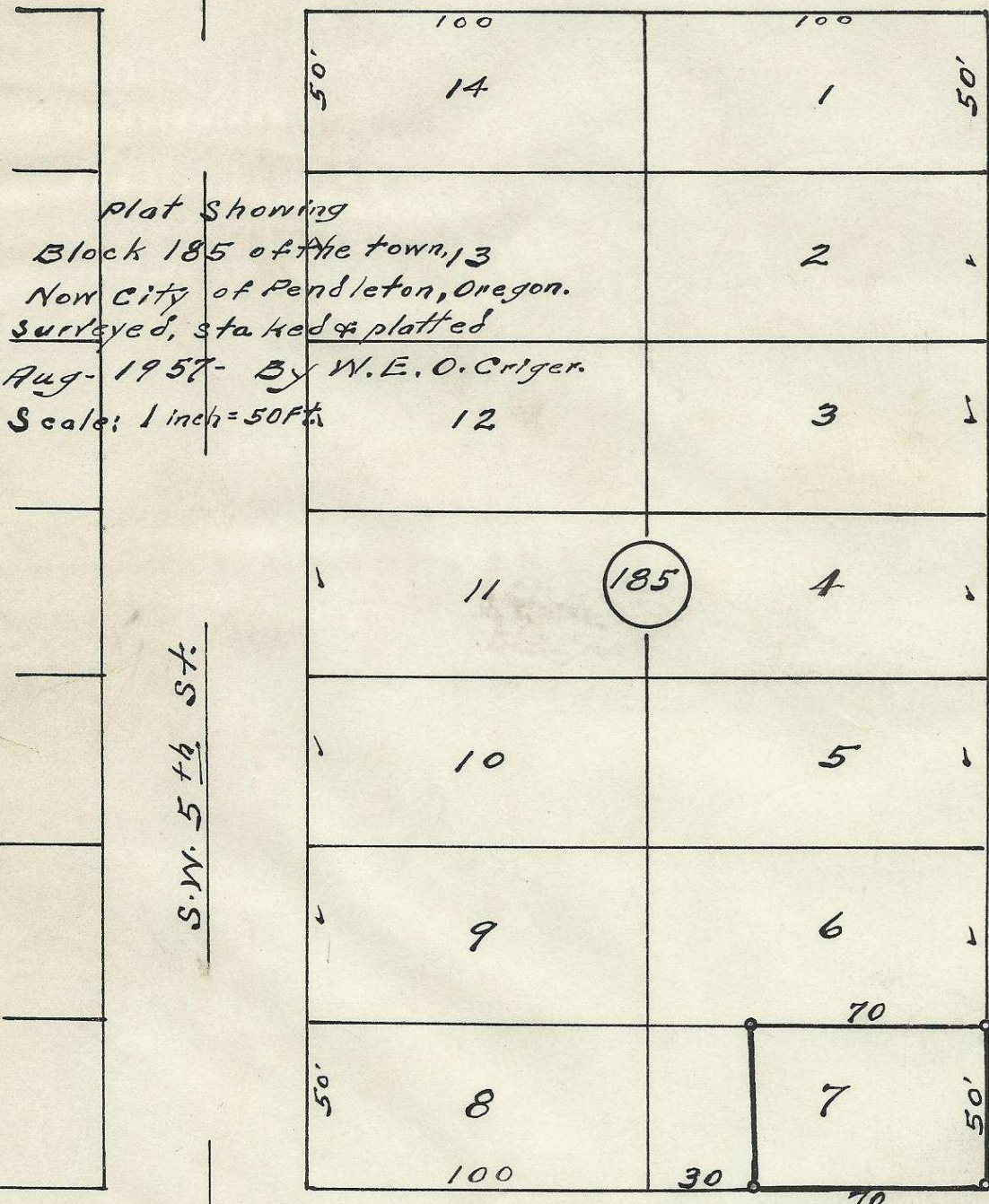


60'

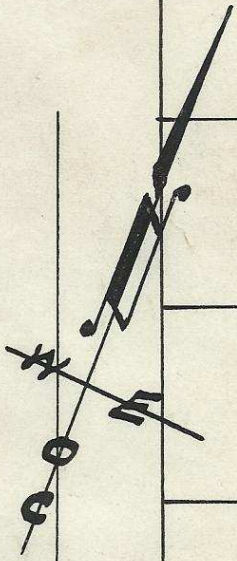
S. W. Goodwin Ave.

60'



Plat Showing
 Block 185 of the town, 13
 New City of Pendleton, Oregon.
 Surveyed, staked & platted
 Aug-1957- By W. E. O. Criger.
 Scale: 1 inch = 50 ft.

S.W. 5th St.



S.W. 4th St.

60'

S.W. Hailey Ave.

60'

2N3210DA

06-254-Ax

