

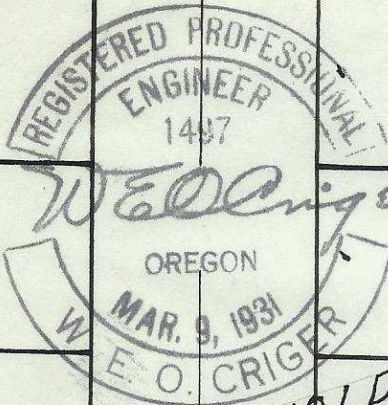
60

60

60

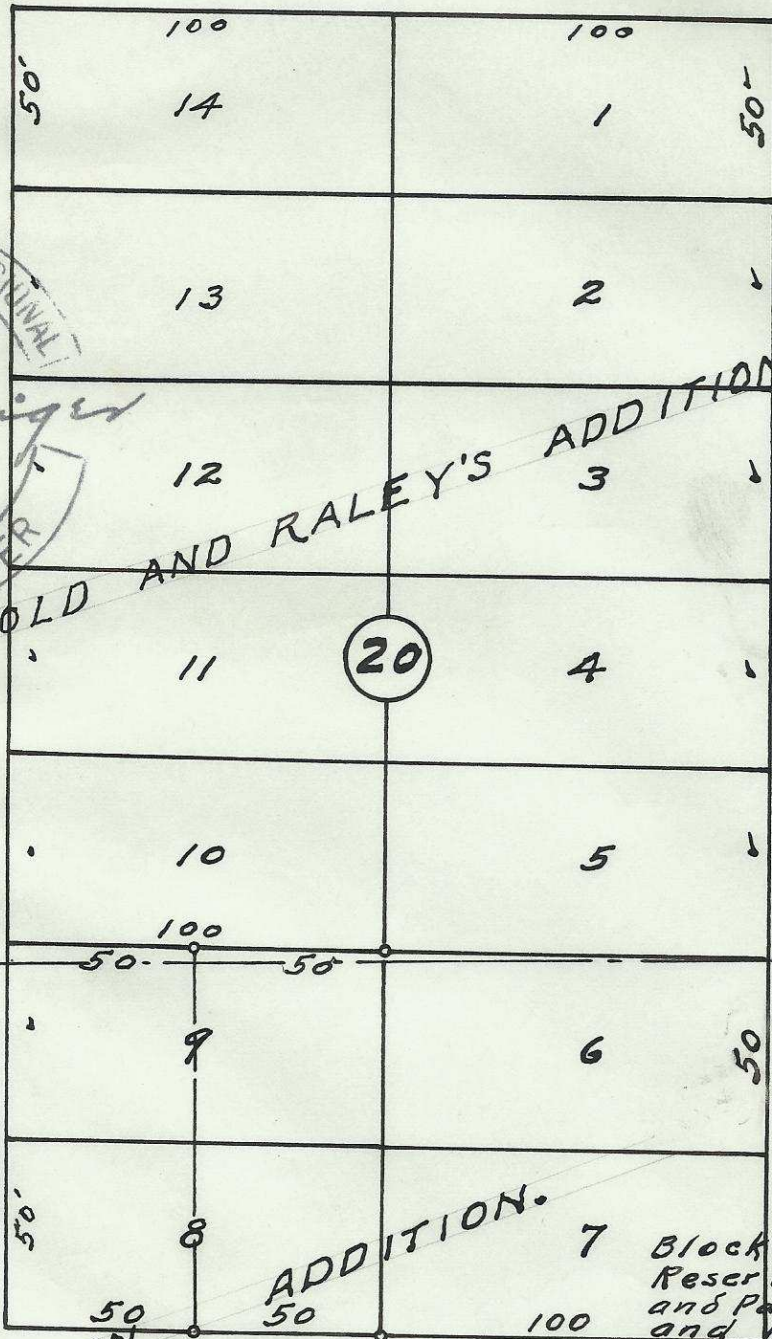
S.W. COURT AVE.

60



S.W. 5th St.

S.W. 4th St.



ARNOLD AND RALEY'S ADDITION

RESERVATION ADDITION.

Plat of
Block 20 Partly in
Reservation Addition
and Partly in Arnold
and Raley's Addition
City of Pendleton, Ore.
surveyed, staked & platted
Mar. 1950.

S.W. DORION AVE.

By W. E. O. Criger, E.
Scale 1 in. = 50 ft.

60

60

20 32 10AA

60

06-149-Ax