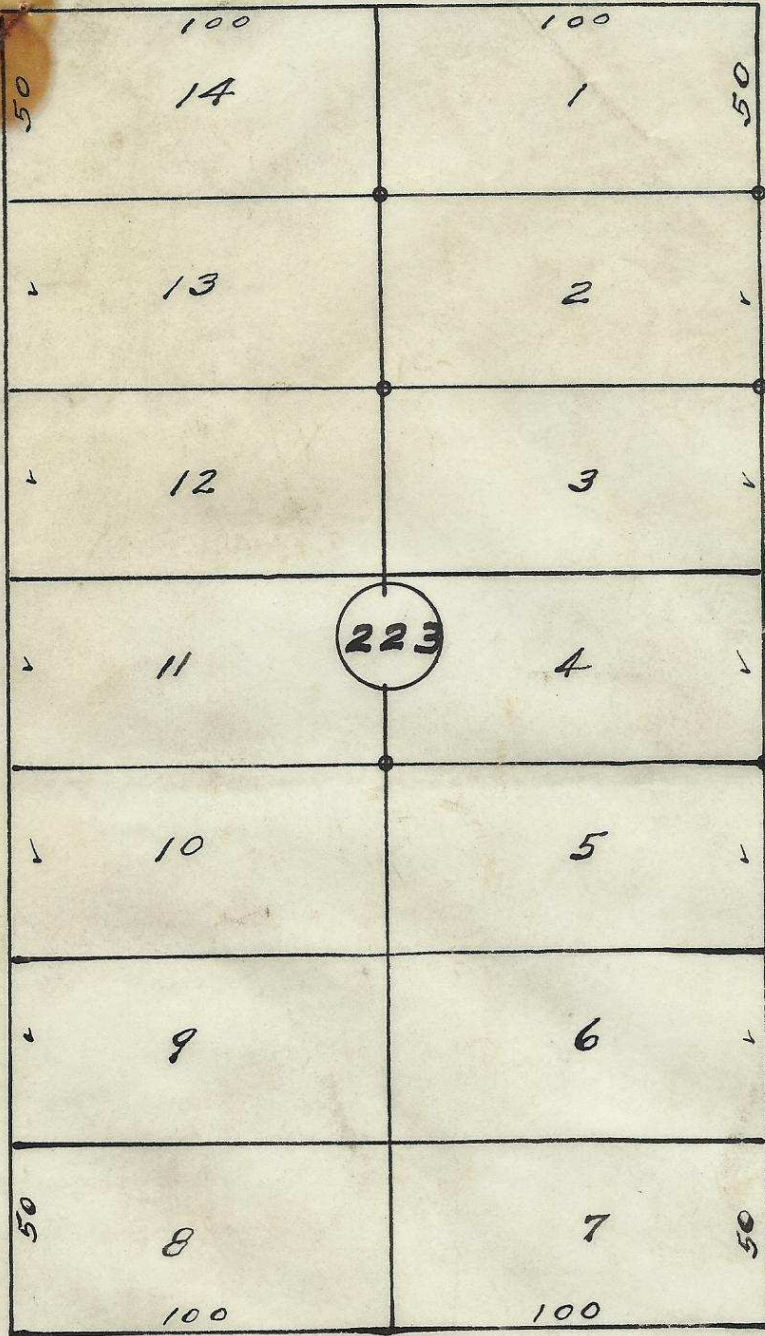
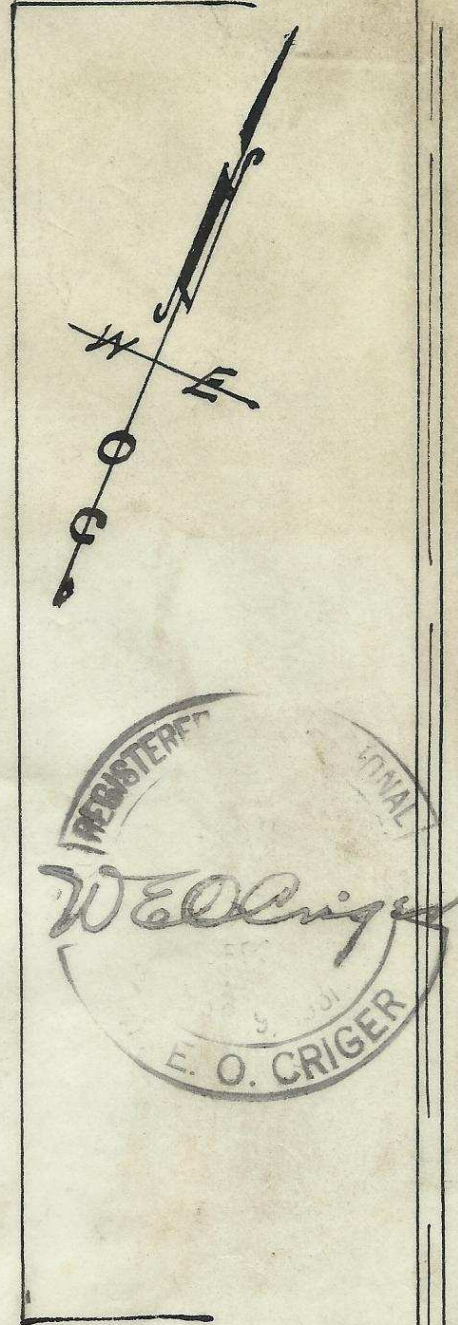


S. W. Hailey Ave.



S.W. 2nd St.

S.W. 1st St.



S. W. Isaac Ave.

2N32 HCB

06-243-Ax

plat of
 Block 223 of Reservation Addition
 to City of Pendleton, Oregon -
 Surveyed, staked & platted, Apr. 27-1956
 By W. E. O. Criger -
 Scale: 1 inch = 50 Feet.

(4)