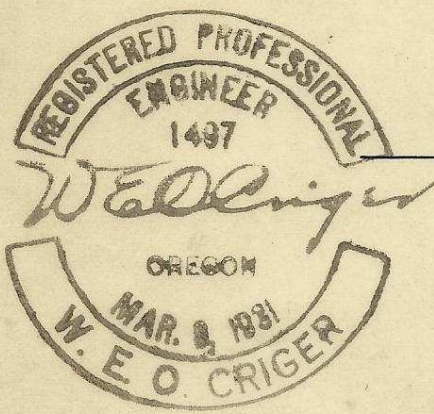
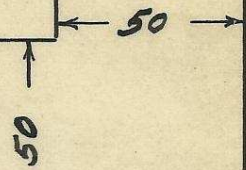


Milton.

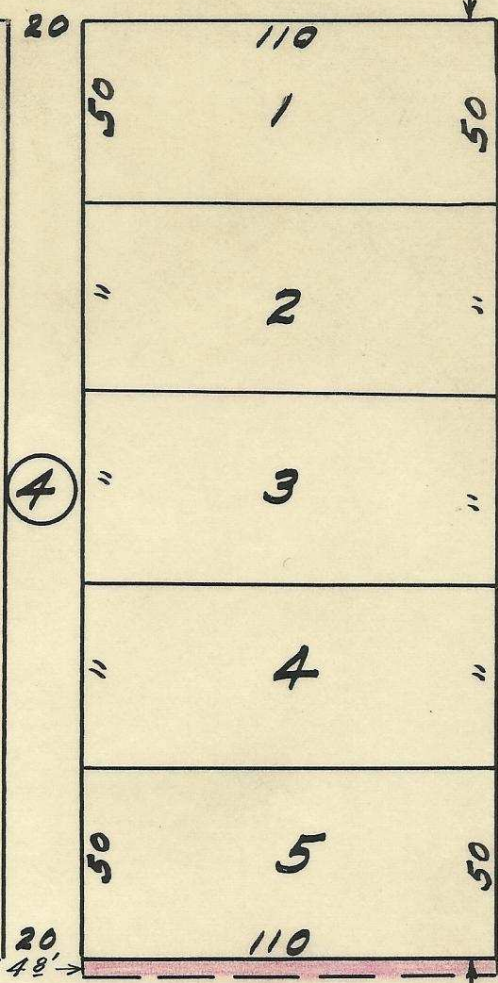
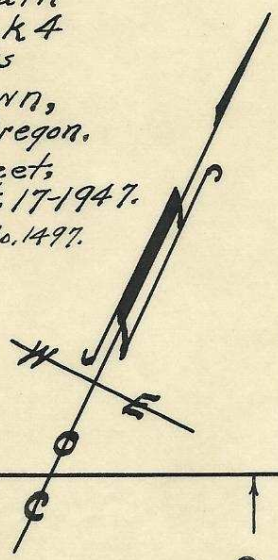


BALM ST.



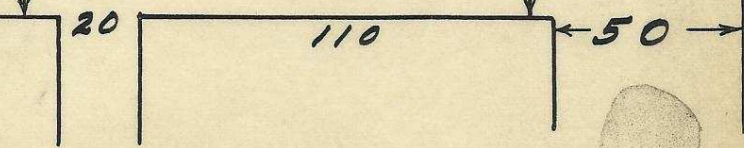
Plat Showing Encroachment upon the North side of Maple Street, from the south line of Lot 5 of Block 4 of Columbia Heights Addition, to the town, now City of Milton, Oregon. Scale: 1 inch = 50 Feet. Surveyed & Platted Oct. 17-1947. By - W. E. O. Criger, Ore. Reg. C. E. No. 1497.

5N35 12 BC



COLLEGE ST.

MAPLE ST.



06-222-Ax

