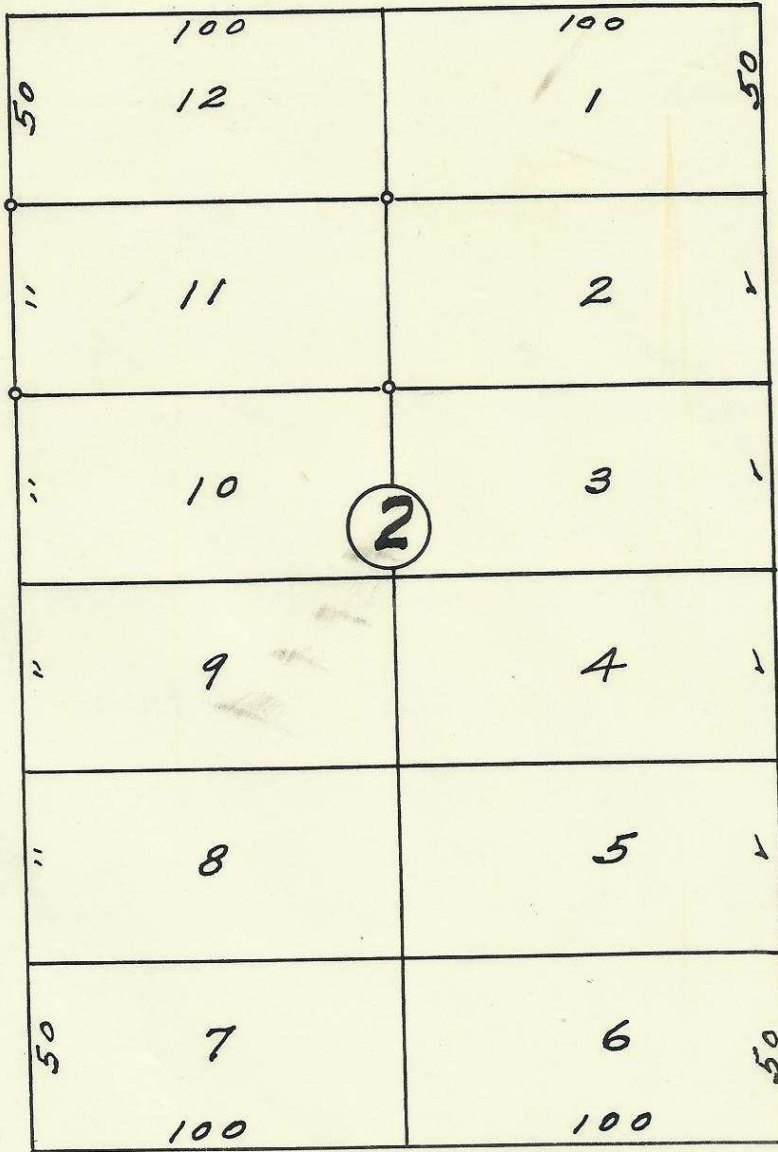


N. W. Furnish Ave.

60



N. W. 9th St.

N. W. 8th St.

N. W. Ellis Ave.

60

60



2037-3DC

Plat of
Block 2 of Livermore's Addition
To the City of Pendleton, Oregon.
Surveyed, staked and platted June 1951
By W. E. O. Criger.
Scale: 1" = 50'

06-212-Ax

Fullerton