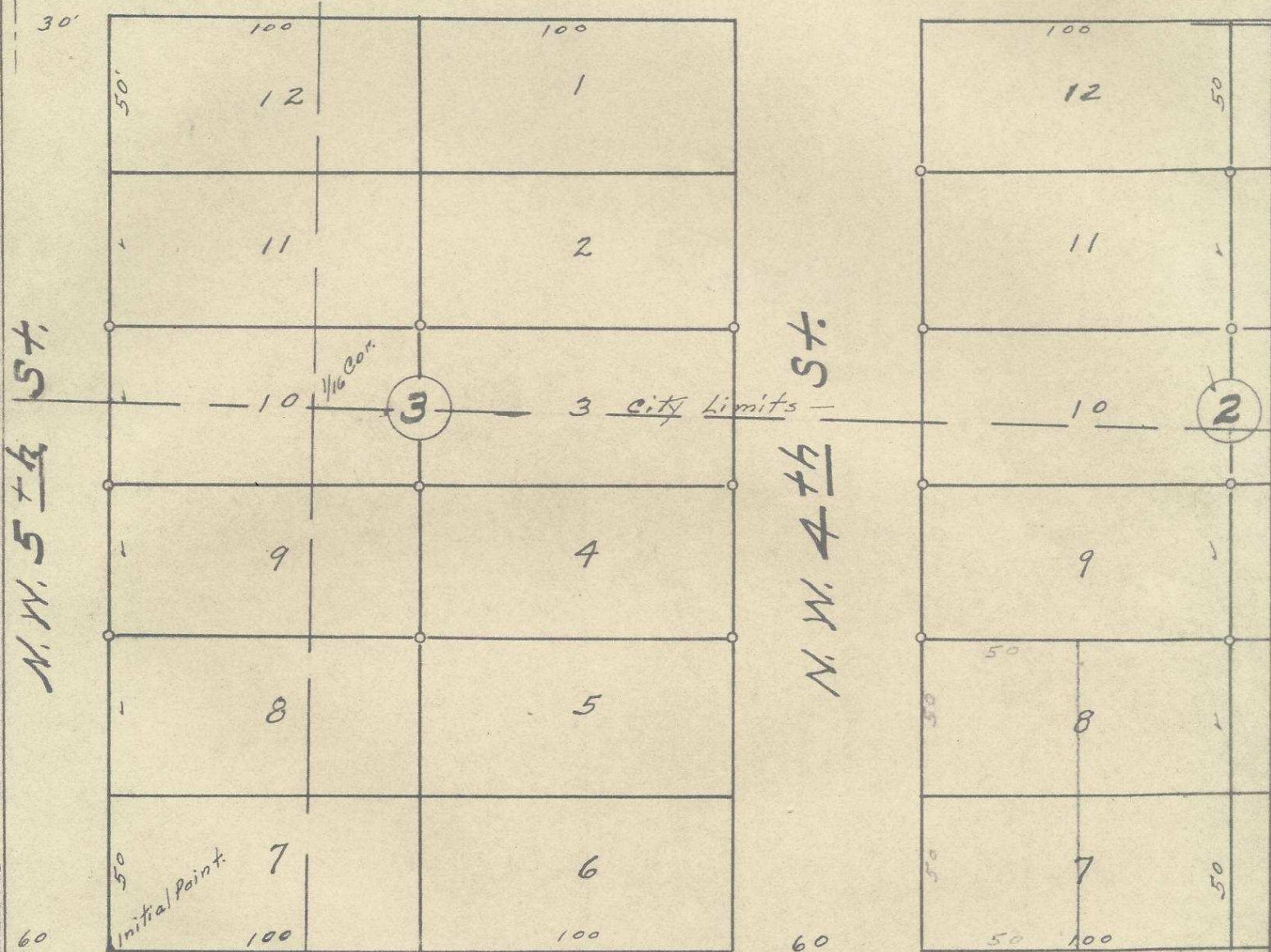


Stone Mon.  
90°



N.W. 5th St.

N.W. 4th St.

N.W. Horn

Ave.

60 Ave.

N.W. Gilliam  
 REGISTERED PROFESSIONAL  
 ENGINEER  
 1497  
 W. E. O. CRIGER  
 OREGON  
 MAR. 9, 1931  
 W. E. O. CRIGER

2N323DC

Plat of Blocks 2 and 3 of  
 Livermore's Second Addition  
 to the City of Pendleton, Oregon  
 Surveyed, Staked & Platted, Mar. 1949  
 By W. E. O. Criger.

Scale: 1 inch = 50 Feet.

06-182-Ax