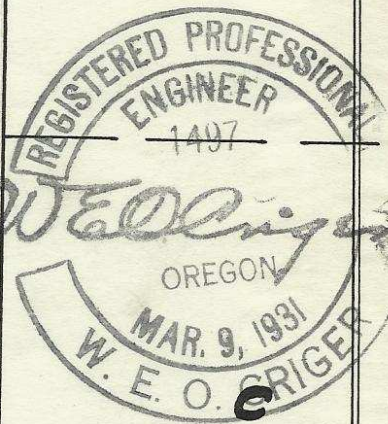
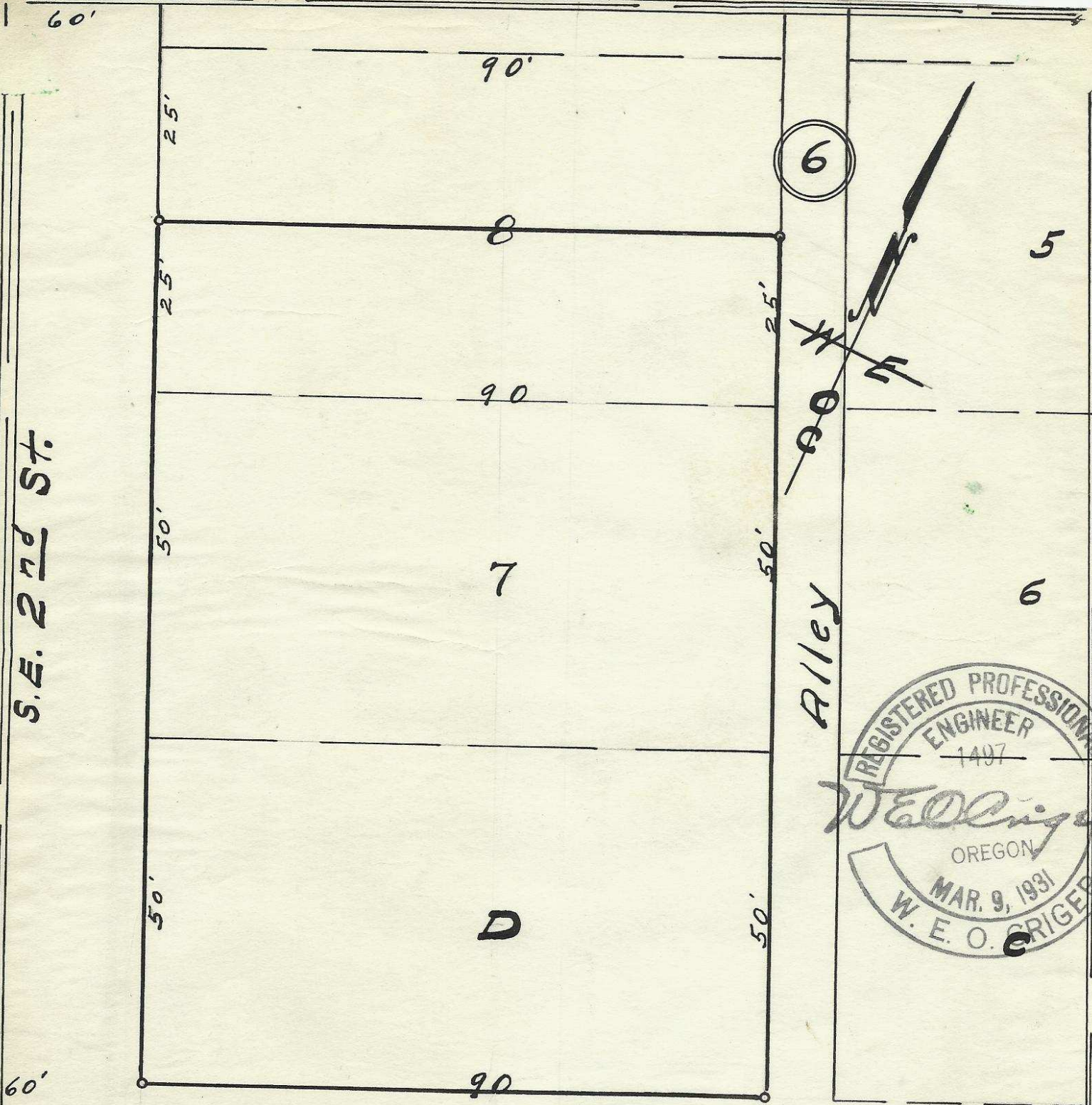


S.E. 2nd St.



2N32 11BB

S.E. Dorion Ave.

06-127-Ax

Plat showing
Part of Block 6 of Original town,
now City, of Pendleton, Oregon.

Surveyed, staked & platted -
By W.E.O. Criger.

Scale: 1 inch = 20 Feet.

Bill Brenner - (The Dalles)

131678-P.541