

S. E. Emigrant Ave.

60'

1

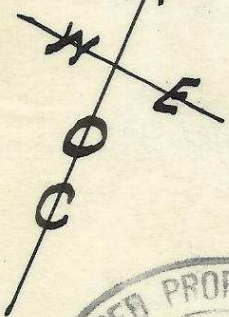
E/2
1

S. 23° 26' E.

93°

50°

50°



I

467

Building Line

Garbage Can Strip

P.T.

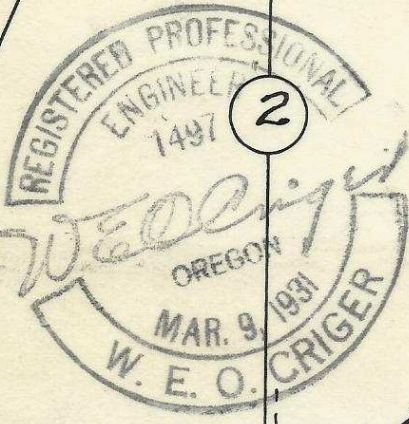
S. E. 4th St.

Sheow Nom Lee

N. 34° 50' E - 743' - L.C.
8° 10' 30" Curve.

E/2
2

2



Plat showing
Block "I" of
Made full by
block in Reservation
to the town, Now
Pendleton,
surveyed, staked &
By
Scale: 1" = 10'

Portion of
South Pendleton
supplimentary
Addition
City of
Oregon.
Platted Dec. 1950
W. E. O. Criger.

U. P. R. R. R/W

E/2
2

223

39

41

467

442

488

50°

50°

S. 66° 24' W.

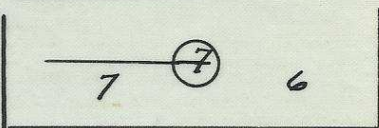
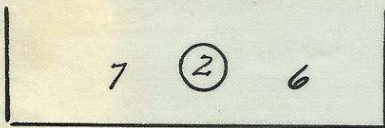
2532 11BB

176

AV

3

James Gamey & W. E. Zimmerman.



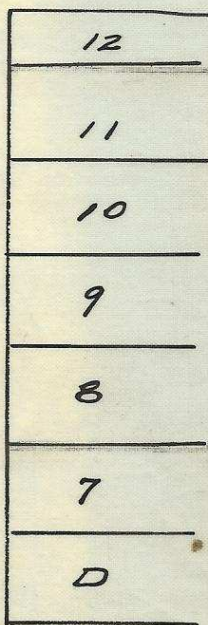
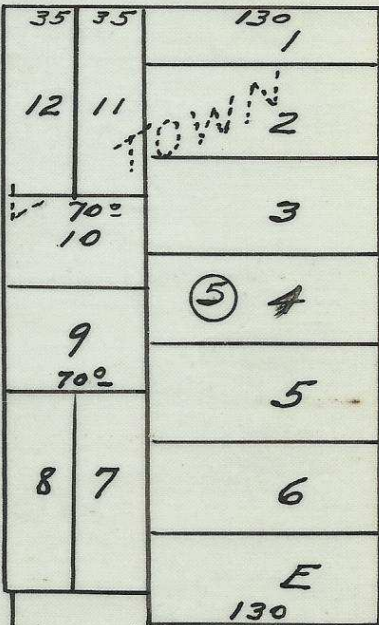
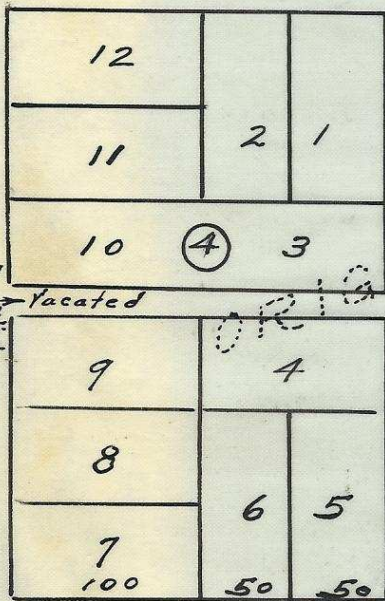
Mon.

S. E. COURT ST.

80

60

60



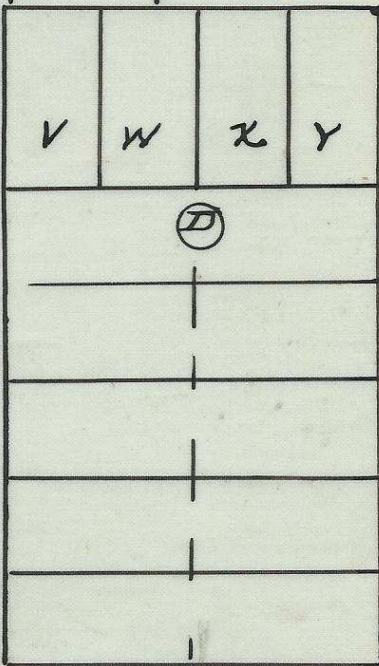
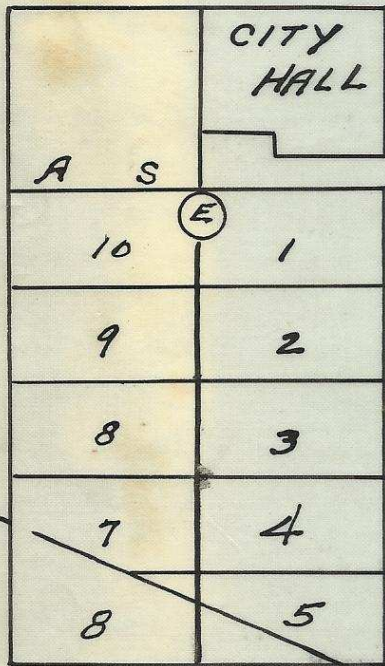
See #1689
D. Book 757
P. 100
Jan 15
1938.
vacated

ORIGINAL

MAIN ST.

S. E. SECOND ST.

S. E. DORION ST.



SOUTH

S. E. FIRST ST.

S. E. EMIGRANT ST.

2N 52 11 BB
06176-Ax