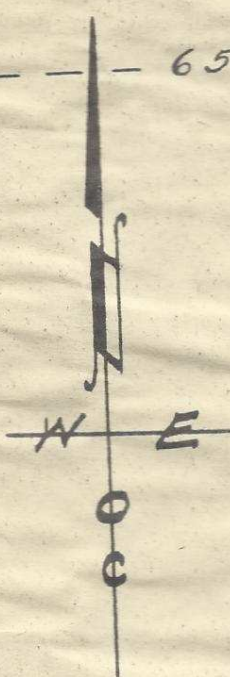
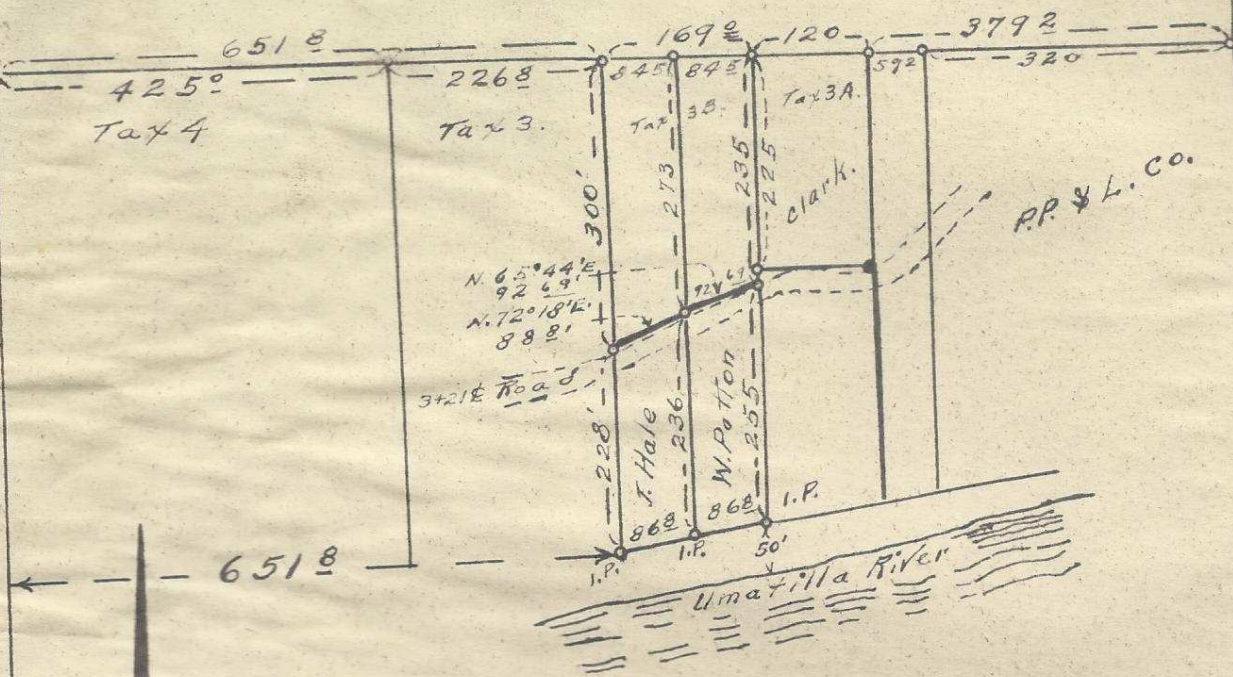


Stangier

Owens.



32
10 11

REGISTERED PROFESSIONAL
ENGINEER
1937
W. E. O. CRIGER
OREGON
MAR 9 1931
W. E. O. CRIGER

Map of descriptive tracts
located in S.W/4 of S.W/4 of
Sec. 2 T. 2 N., R. 32 E., W. M.
Uma Tilla County, Oregon.
Surveyed, staked & platted Sept-1955
By W.E.O. Criger
Scale: 1 inch = 200 Feet.

06-157-

Waible E. Peterson Frank Searcy